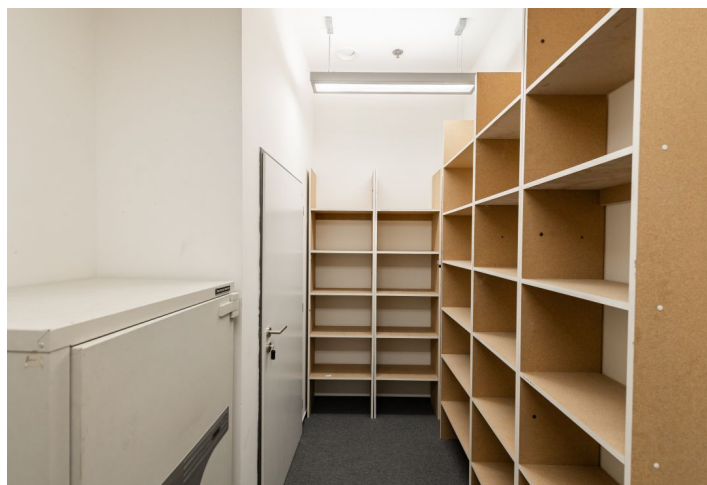


Office space

Rented

Prague 5, Smíchov, Radlická

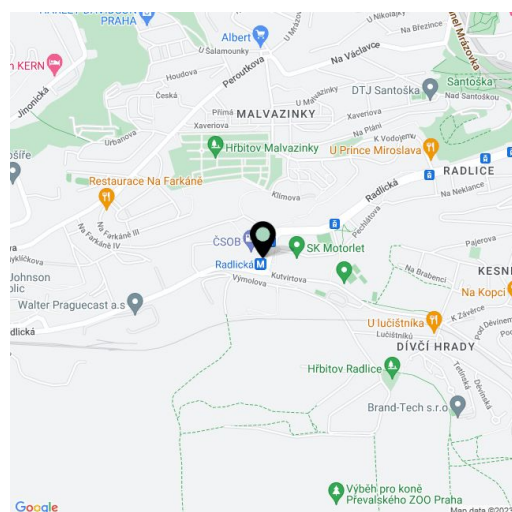


Office space

Rented

Prague 5, Smíchov, Radlická

Service price	110 CZK monthly per m ²
Available area	430 m ²
Cellar	-
Parking	EUR 120 / ps / month
PENB	G
Reference number	18236



Modern administrative complex offers high quality office space for lease on the 3rd floor in Prague 5. The complex consists of a historic building that has undergone a reconstruction and a modern building with many shops and restaurants and a covered atrium in the courtyard. The building is one of the most advanced intelligent buildings in Prague with a fully integrated and centralized management system controlling security, access, lighting and energy.

Location:

The building is within walking distance of the Anděl metro station (line B) and shopping zone. The offices are very easily accessible by car and public transportation, with a number of tram stops, a bus and train station.

Features and Services:

Central receptions in historic and modern building

Security service 24/7

EPS, EZS, ACS CONTROL, CCTV and intelligent building management system

Lifts

Magnetic card access

Air-conditioning

Partly openable windows

Heavy duty carpets

Equipped kitchenettes

Underground parking

Rental and service charges listed without VAT. Lessee pays no commission.