

## Apartment Two-bedroom (3+1)

Rented

115 m<sup>2</sup>, Prague 1, Malá Strana, Všešrdova



## Apartment Two-bedroom (3+1)

Rented

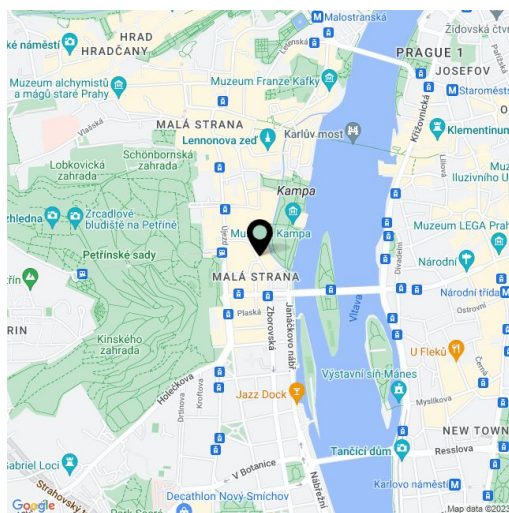
115 m<sup>2</sup>, Prague 1, Malá Strana, Všešrdova

Total area	121 m <sup>2</sup>
Floor area*	115 m <sup>2</sup>
Balcony	6 m <sup>2</sup>
Parking	Parking in blue zone.
Cellar	-
PENB	G
Reference number	18177
Available from	Immediately

Spacious 2-bedroom flat on the 4th floor of historic building situated in the picturesque Malá Strana neighbourhood. The building noted for being the first one in Prague to have an elevator installed is located in a very nice part of the city, steps from the Vltava riverbank and Kampa Park. Good transport accessibility by car and trams, tram stop is just a minute walk from the building.

The apartment includes a living room, fully fitted kitchen with dining area and an access to a balcony facing a quiet courtyard, 2 bedrooms, bathroom with tub and toilet, guest toilet, and entry hall.

Preserved original details, parquet floors, telephone line, Internet, audio entry phone, camera system connected to 24-hour security. Common building charges are billed separately. Utilities will be transferred to the tenant's name.



\* Area of the unit according to the Civil Code. The area consists of the sum total area of the entire unit bounded by perimeter walls.

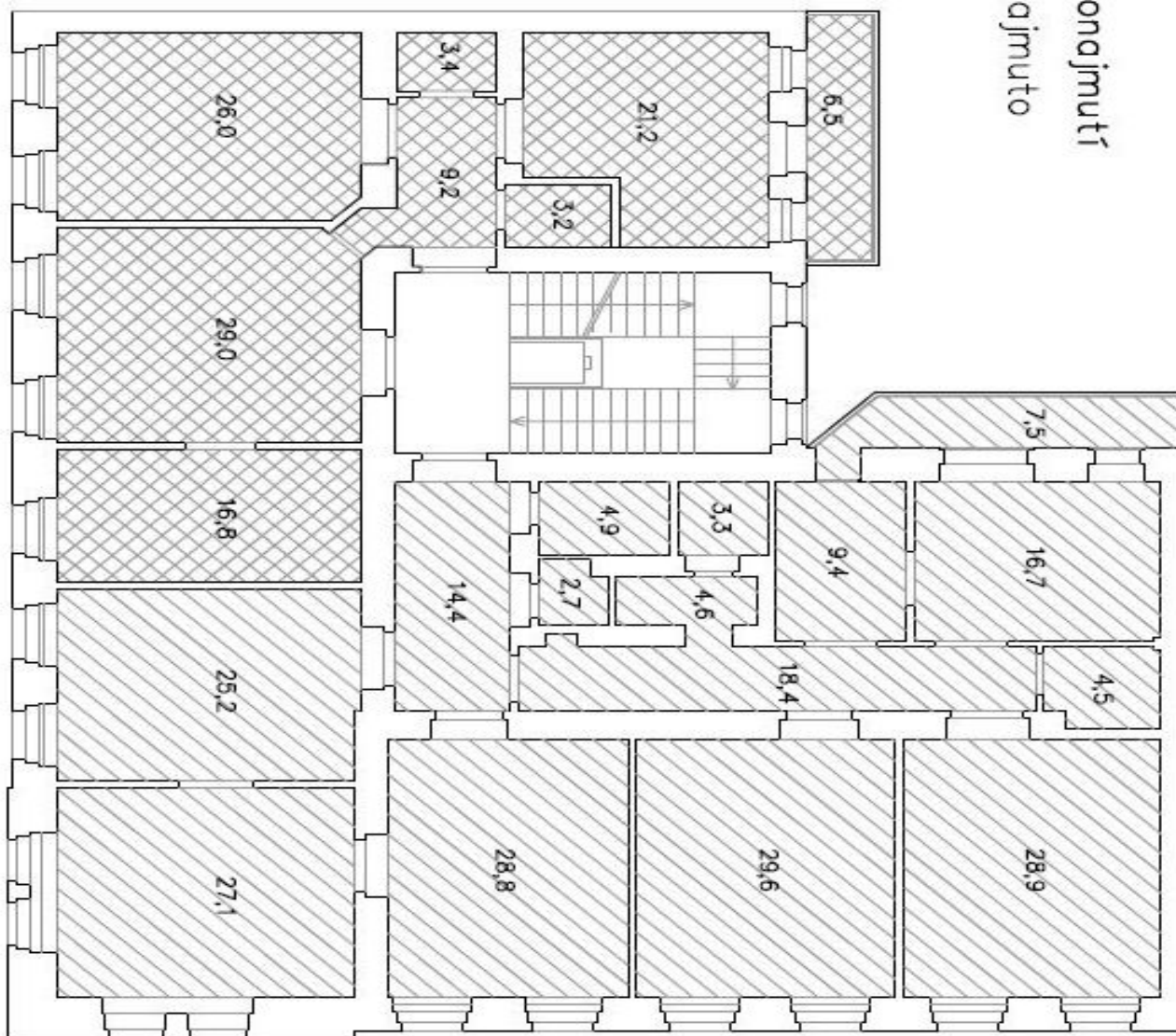
# Apartment Two-bedroom (3+1)

Rented

115 m<sup>2</sup>, Prague 1, Malá Strana, Všešrdova

5. NP

115,30 m<sup>2</sup> k pronajmutí  
226,00 m<sup>2</sup> pronajmuto



# Apartment Two-bedroom (3+1)

Rented

115 m<sup>2</sup>, Prague 1, Malá Strana, Všešrdova

