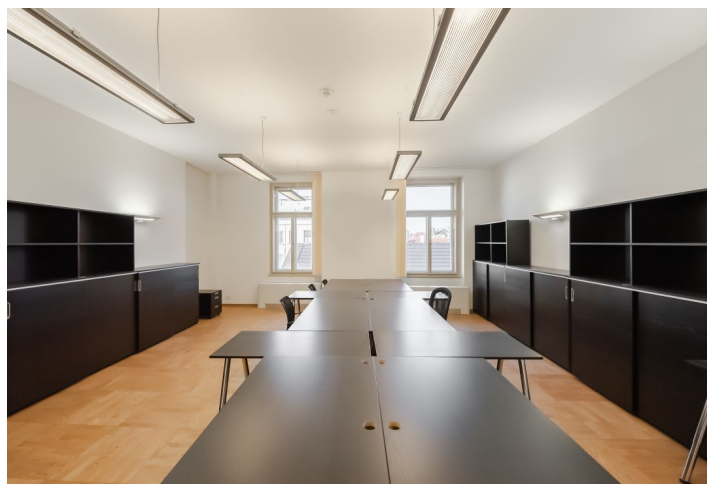


Office space

€ 16.00 - 16.50 / m<sup>2</sup> | CZK 399 - 412 / m<sup>2</sup>

Prague 1, Staré Město, 28. října



## Office space

€ 16.00 - 16.50 / m<sup>2</sup> | CZK 399 - 412 / m<sup>2</sup>

Prague 1, Staré Město, 28. října

<b>Service price</b>	140 CZK monthly per m <sup>2</sup>
<b>Available area</b>	175 m <sup>2</sup>
<b>Cellar</b>	-
<b>Parking</b>	-
<b>PENB</b>	G
<b>Reference number</b>	17923

Office space for lease on the 3rd floor in a completely renovated historical building in the centre of Prague. This impressive early Art Nouveau building was completed in the early 20th century by Czech architect Matěj Blecha, the youngest brother and partner of builders and architects Josef and Alois Blecha. Czech sculptor and designer Celestýn Klouček contributed to the sculptural decoration. The building is situated in the area of the UNESCO designated Prague zone of cultural heritage protection.

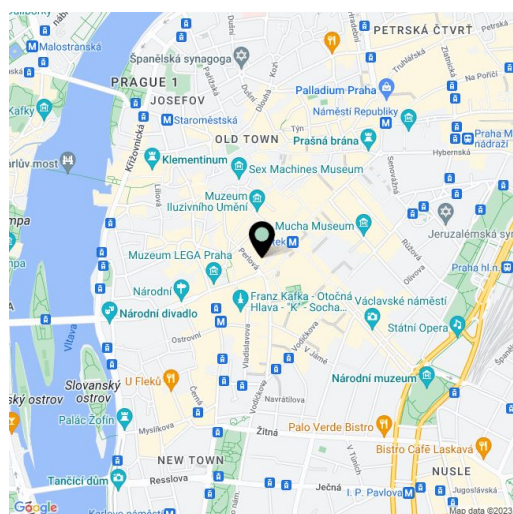
**Location:**

The building is located in the city center at 28. října, connecting two of the busiest streets in Prague's center – Na Příkopě and Národní just a few steps from Můstek metro station (lines A and B) and tram stop Václavské náměstí.

**Features and Services:**

- Raised floors
- Modern lighting
- Air-conditioning
- Structured cabling
- Openable windows
- Lifts
- Reception
- 24-hour security
- Social facilities
- Shower
- Kitchenette

Rental and service charges listed without VAT. Lessee pays no commission.



Office space

Prague 1, Staré Město, 28. října

€ 16.00 - 16.50 / m<sup>2</sup> | CZK 399 - 412 / m<sup>2</sup>

