

## House Five-bedroom (6+1)

Sold

245 m<sup>2</sup>, Prague 4, Nusle, Na Květnici





# House Five-bedroom (6+1)

**Sold**245 m<sup>2</sup>, Prague 4, Nusle, Na Květnici

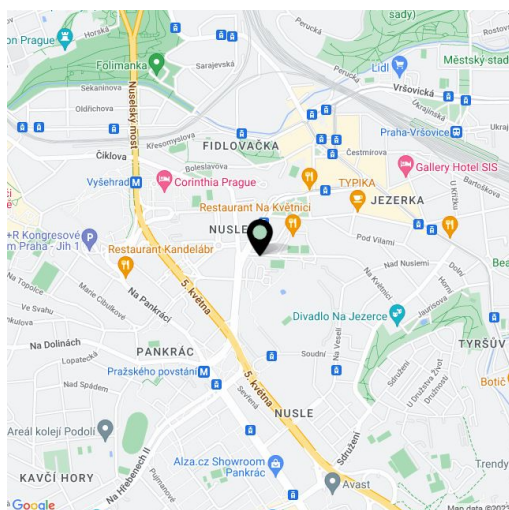
Plot	1 360 m <sup>2</sup>
Foot print	150 m <sup>2</sup>
Garden	1 210 m <sup>2</sup>
Parking	Yes
Garage	Yes
Cellar	-
PENB	G
Reference number	17902

This Villa that was built in the 1930s is suitable for reconstruction and is situated on a plot with mature trees in a pleasant residential area of Prague 4. Designed in 1924 by František Krásný, the architect of the Tyrš House at Újezd and other buildings.

The ground floor of this three-story villa consists of an entry hall, a living room with access to the terrace, a kitchen, 2 rooms, a utility room and a bathroom with toilet. Walking up the wooden staircase you will get to the first floor that offers an entry hall, 3 bedrooms (one with a closet), a bathroom and a separate toilet. The house also has a basement with a hall, a laundry room and 2 utility rooms. The interior equipment includes wooden parquet floors and refurbished wooden windows. **The house features a garage.**

The villa is surrounded by the garden with full-grown trees and bushes, and is located in a quiet location near Jezerka park and Pankrác with all public amenities within reach. Very good access to the center thanks to bus and tram lines.

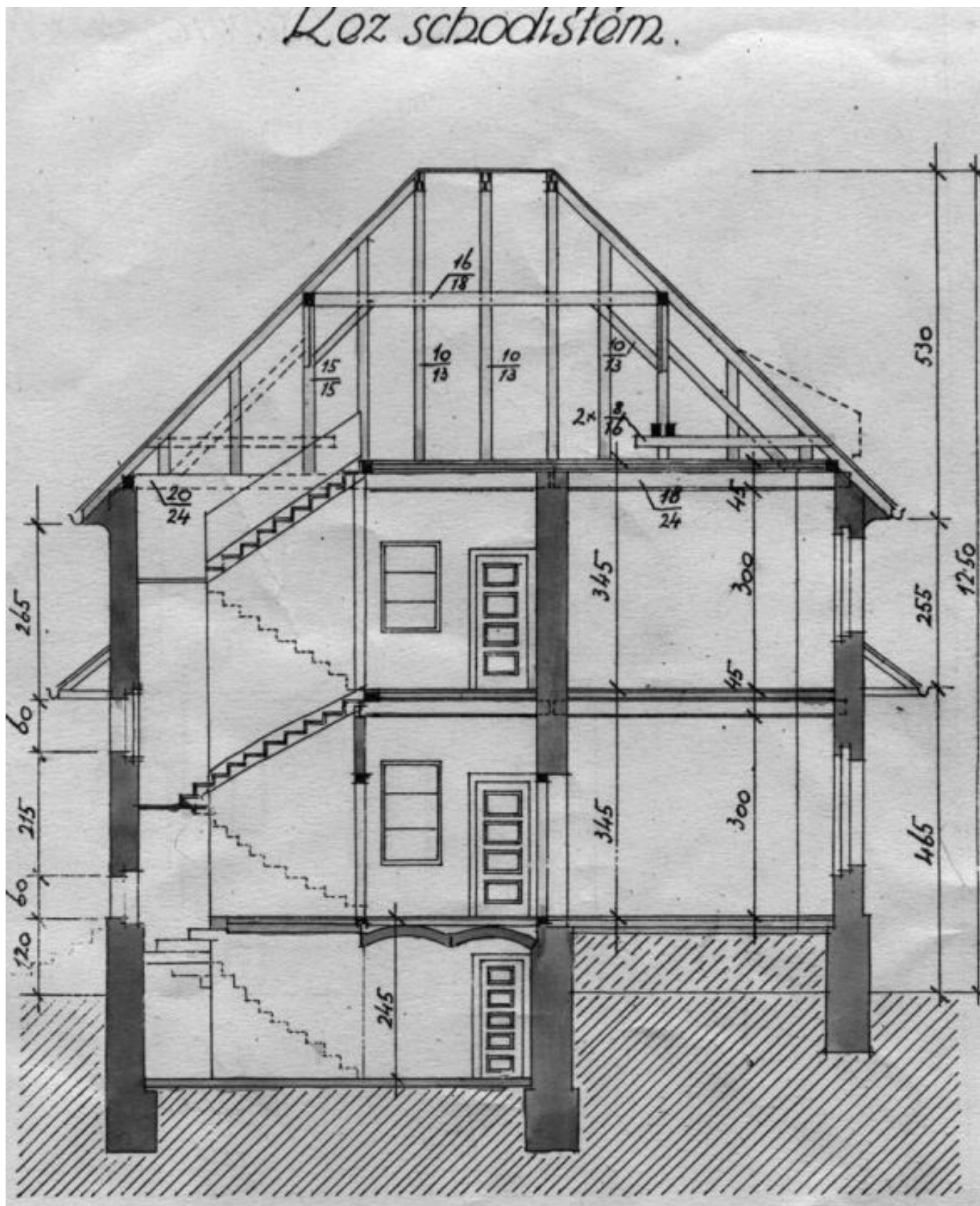
Interior 244.4 m<sup>2</sup>, foot print 150 m<sup>2</sup>, plot 1360 m<sup>2</sup>, garden 1210 m<sup>2</sup>.



## House Five-bedroom (6+1)

Sold

245 m<sup>2</sup>, Prague 4, Nusle, Na Květnici

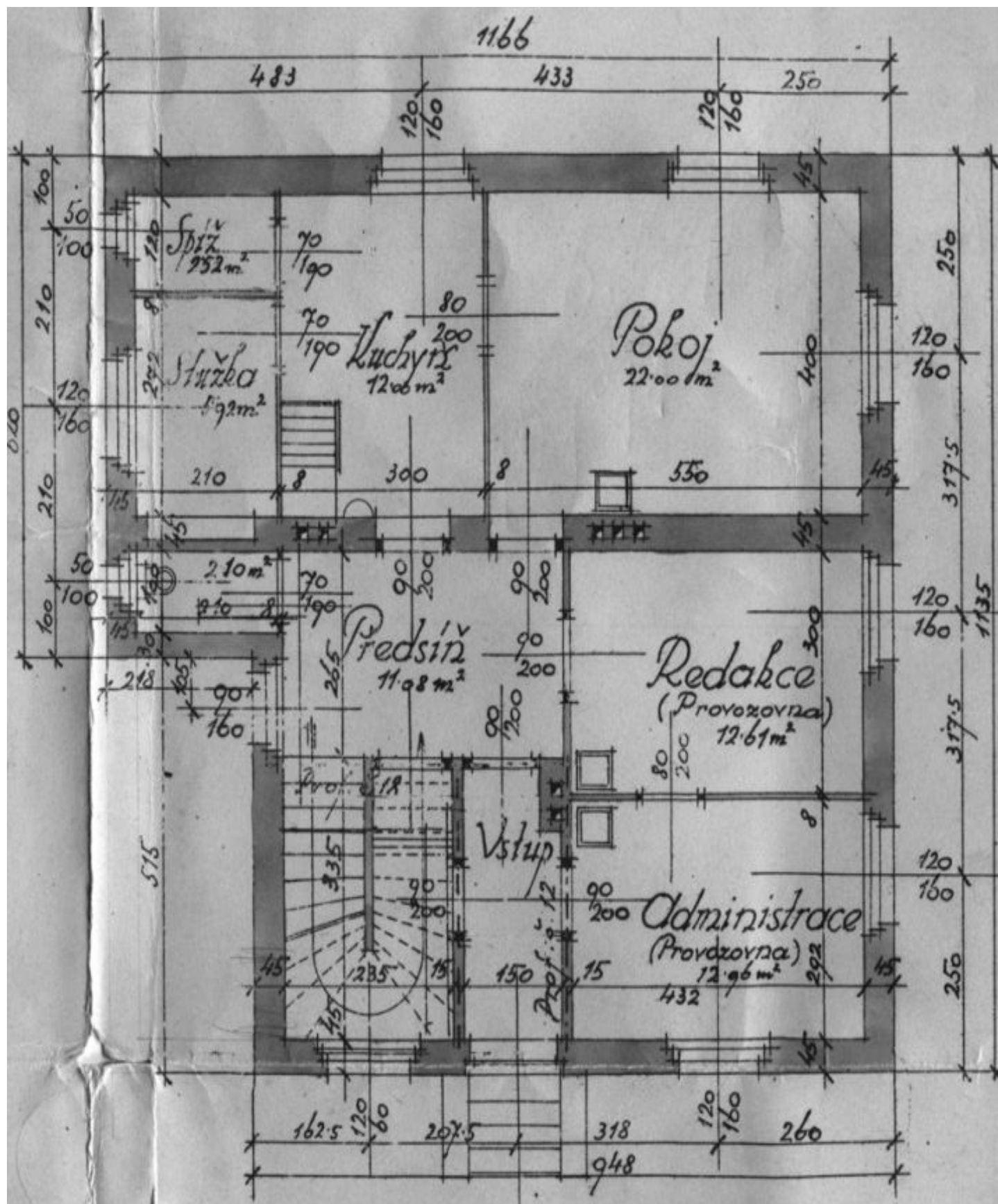




# House Five-bedroom (6+1)

Sold

245 m<sup>2</sup>, Prague 4, Nusle, Na Květnici



# House Five-bedroom (6+1)

Sold

245 m<sup>2</sup>, Prague 4, Nusle, Na Květnici

