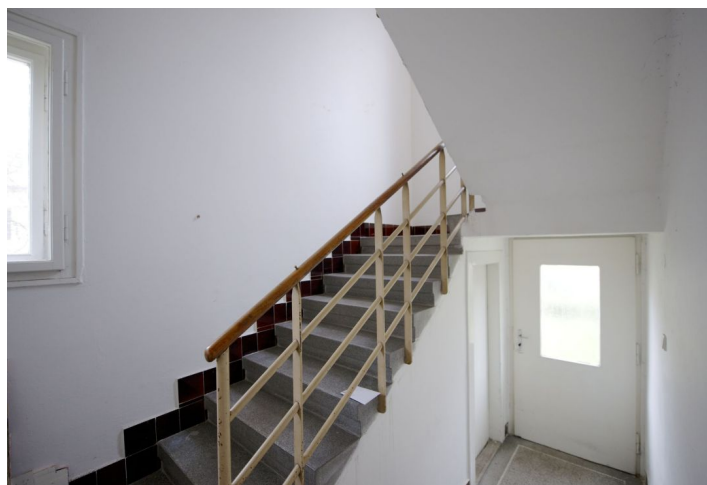


## House Five-bedroom (6+1)

Sold

245 m<sup>2</sup>, Prague 3, Žižkov, Jilmová



# House Five-bedroom (6+1)

**Sold**245 m<sup>2</sup>, Prague 3, Žižkov, Jilmová

Plot	739 m <sup>2</sup>
Garden	253 m <sup>2</sup>
Parking	-
Cellar	Yes
PENB	G
Reference number	17806

Family house from the 1930s situated in a residential neighborhood near Židovské pece park in Prague 3 and 300 m from a tram stop.

The house is suitable for a complete reconstruction. Currently it is divided into 3 separate apartment units: a two-bedroom ground floor unit, a two-bedroom first floor unit and a one-bedroom attic unit. The whole house can also be used with small adjustments as a family villa or the current layout can be used as a house for multiple generations. Great residential location and a view of a neighboring park, quiet area with good public amenities: a pre-school, children's playground, grocery store, restaurants, etc..

Interior 245 m<sup>2</sup>, garden 253 m<sup>2</sup>, plot 339 m<sup>2</sup>.

