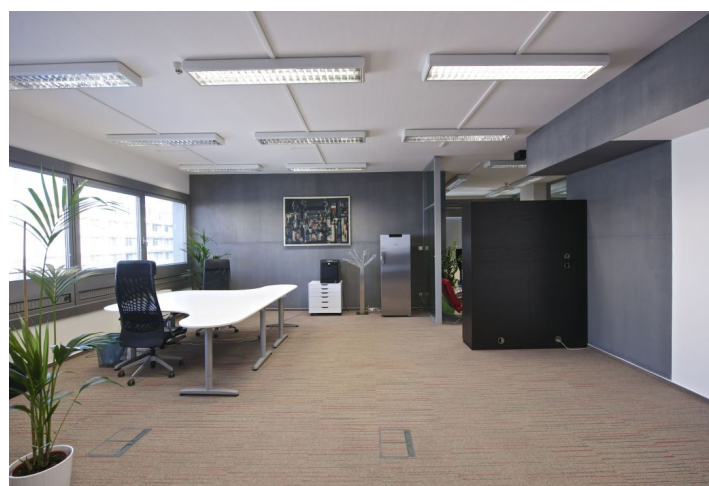


Office space

Rented

Prague 4, Michle, Želetavská



Office space

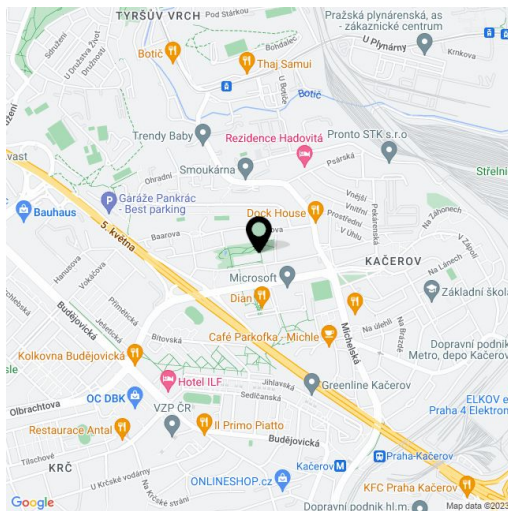
Rented

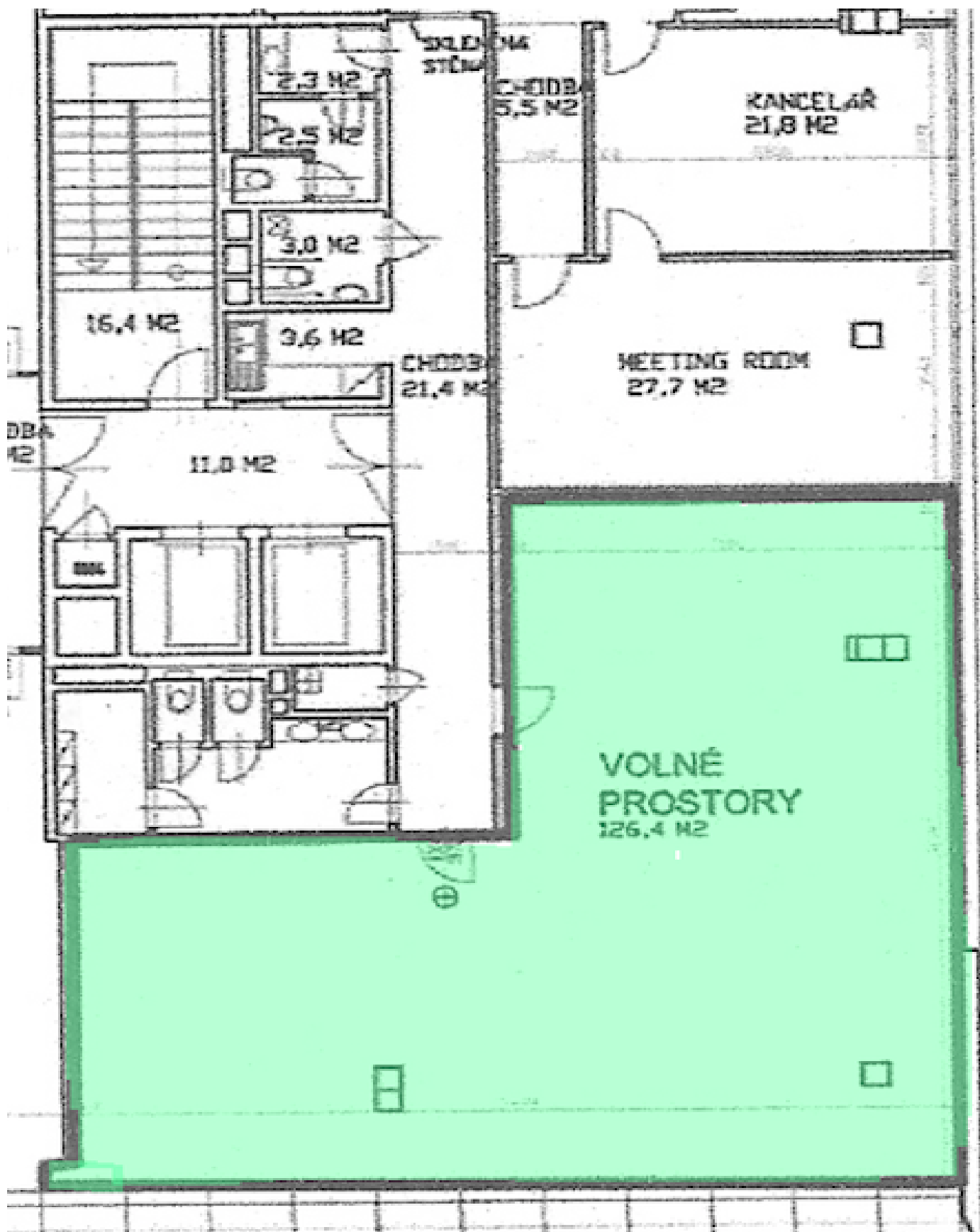
Prague 4, Michle, Želetavská

Service price	133 CZK monthly per m ²
Available area	126 m ²
Cellar	-
Parking	Yes
PENB	G
Reference number	17800

Office space for rent on the 5th floor of an administrative building situated in Prague 4. Very good accessibility by car and public transport. Bus stations and the Budějovická metro station (line C) are all within walking distance, with quick connection to the Prague Ring Road. The floor plan is open-space, with two meeting rooms/ offices, a reception, and a server room. Toilets are located in the hallway. Features include suspended ceilings, air-conditioning, a fire protection system, and openable windows. There is an elegant reception desk and 24/7 security in the building. Parking is available in the underground parking garages.

Rental and service charges listed without VAT. Lessee pays no commission.





Office space

Rented

Prague 4, Michle, Želetavská

