

Apartment Two-bedroom (3+kk)

Sold

92 m², Prague 6, Bubeneč, Jugoslávských partyzánů



Apartment Two-bedroom (3+kk)

Sold

92 m², Prague 6, Bubeneč, Jugoslávských partyzánů

Total area	122 m ²
Floor area*	92 m ²
Terrace	30 m ²
Parking	-
Cellar	Yes
Service price	1954 CZK monthly
PENB	G
Reference number	17793

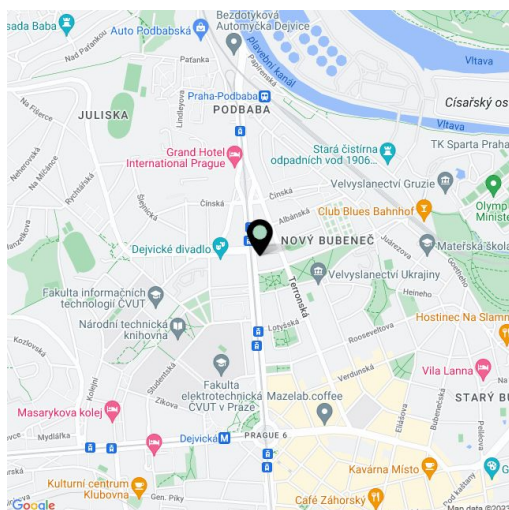
Split-level attic apartment with abundance of natural light and a large terrace, situated on the 5th floor (attic) of a well-kept building with an elevator. Located in an attractive location in Bubeneč near Vítězné náměstí, with great public amenities within reach and excellent access to the city center.

The lower floor offers a cozy living room with an open-plan kitchen and utility room with space for a washing machine, a bedroom, small entrance hall with walk-in wardrobe, and a bathroom with shower. The upper floor accessible via a wide staircase benefits from its master bedroom complete with a walk-in wardrobe, direct access to the courtyard-facing terrace, a built-in wardrobe, a small study, and a bathroom with a large bathtub and heated floor.

The apartment features Fujitsu **air-conditioning**, **solid oiled timber floor** (Jatoba tropical wood), **large skylights with Venetian blinds**, exposed beams in the main living area and a Panther gas boiler.

Popular location in Prague 6 in the immediate vicinity of a tram and bus stop, Dejvické Theater, shops and restaurants. Great connection to the airport and to the center of Prague.

Interior 92.3 m², terrace 30 m².

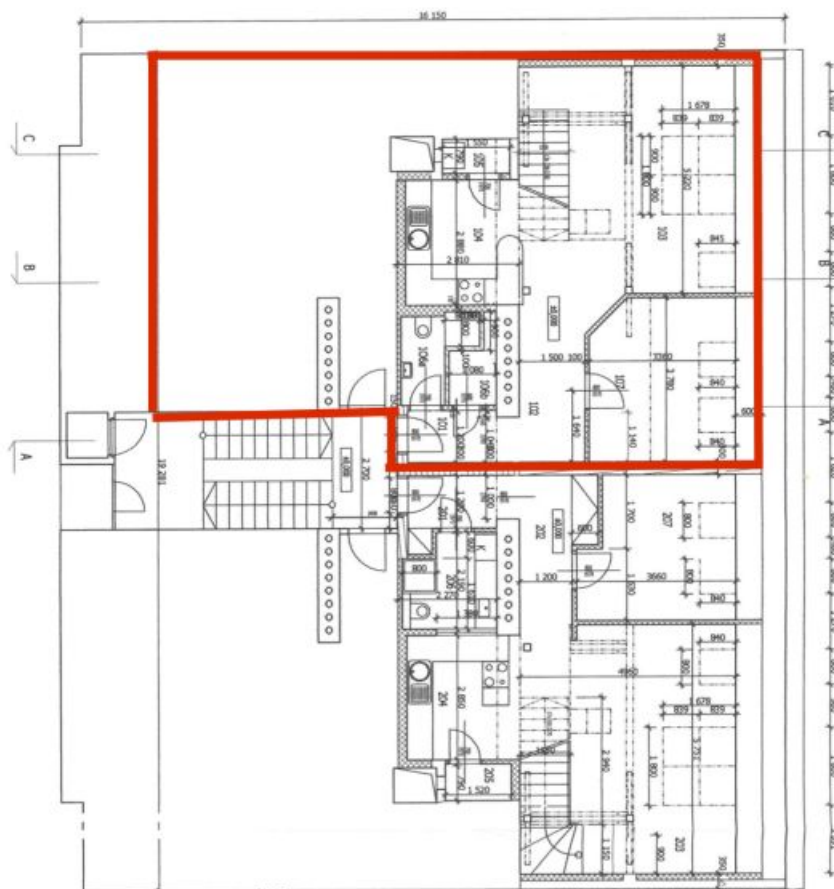


* Area of the unit according to the Civil Code. The area consists of the sum total area of the entire unit bounded by perimeter walls.

Apartment Two-bedroom (3+kk)

92 m², Prague 6, Bubeneč, Jugoslávských partyzánů

Sold



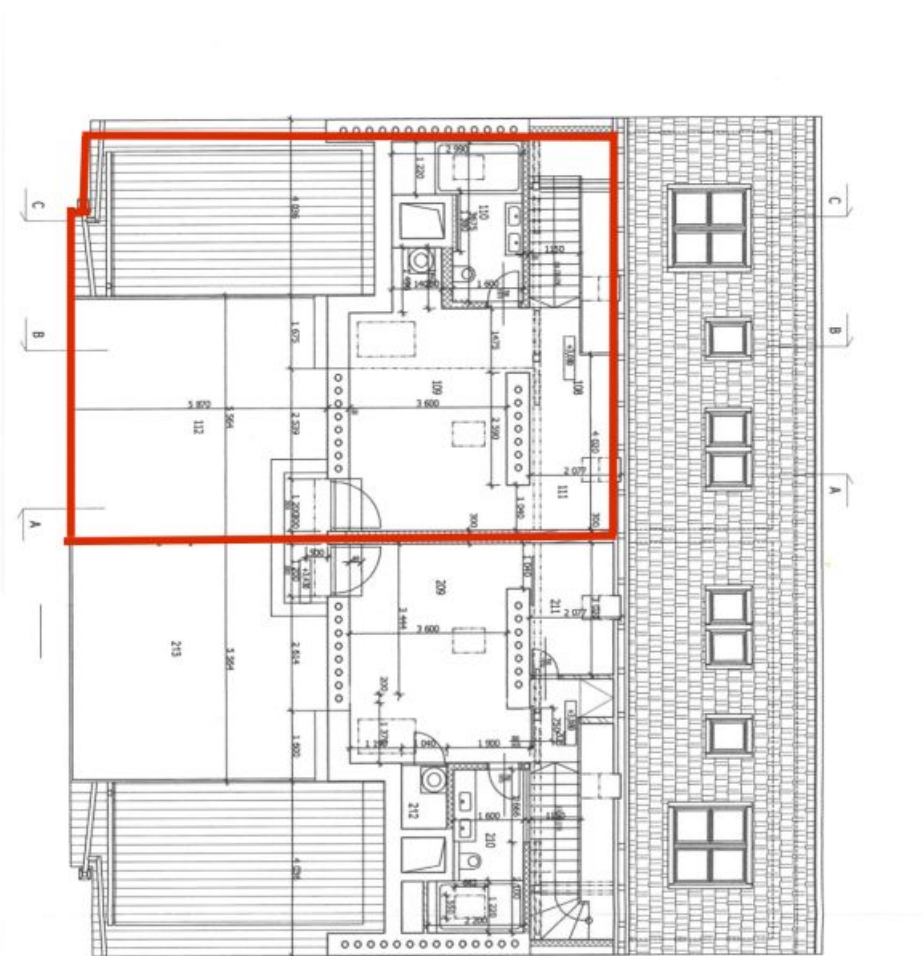
DN	NÁZEV	PLOCHA	PODLAH	OBLOU
101	Přístří	2,85 m ²	b	průmyslová mozaika
102	Obloha	4,42 m ²	b	průmyslová mozaika
103	Obývací pokoj	27,70 m ²	b	průmyslová mozaika
104	Kuchyň/sníd.	8,09 m ²	b	průmyslová mozaika
105	Sál	1,27 m ²	a	ker. dlažba
106a	Koupelna	3,02 m ²	c	ker. dlažba
106b	Sál	1,61 m ²	c	ker. dlažba
107	Pokoj	12,31 m ²	b	průmyslová mozaika
108	Galérie	4,2 m ²	b	průmyslová mozaika
109	Pokoj	21,66 m ²	e	průmyslová mozaika
110	Koupelna	7,45 m ²	f	ker. dlažba
111	Obloha	1,99 m ²	e	průmyslová mozaika
112	Terasa	32,37 m ²	g	drah. mžk.



Apartment Two-bedroom (3+kk)

Sold

92 m², Prague 6, Bubeneč, Jugoslávských partyzánů



ČM	NÁZEV	ROZSAH	POUŽITÍ	OBČAD
101	Přiball	2,80 m ²	b	průmyslová stavba
102	Okna	4,42 m ²	b	průmyslová stavba
103	Okna/ strop	27,7 m ²	b	průmyslová stavba
104	Kuchyně/ lož.	8,09 m ²	b	průmyslová stavba
105	SPZ	1,22 m ²	a	kec dleba
106	Koupelna	3,02 m ²	c	kec dleba
106b	Služ.	1,62 m ²	c	kec dleba
107	Plocha	12,31 m ²	b	průmyslová stavba
108	Galérie	4,2 m ²	b	průmyslová stavba
109	Plocha	21,66 m ²	e	průmyslová stavba
110	Koupelna	7,45 m ²	f	kec dleba
111	Okna	1,99 m ²	e	průmyslová stavba
112	Terasa	30,37 m ²	g	dvk. rož.

