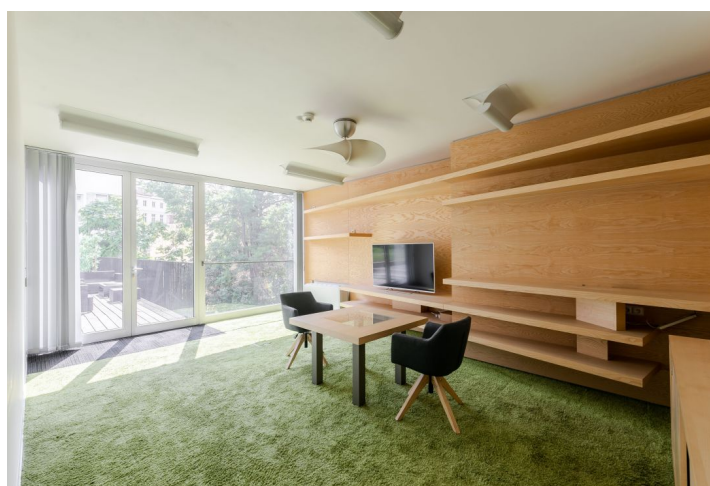


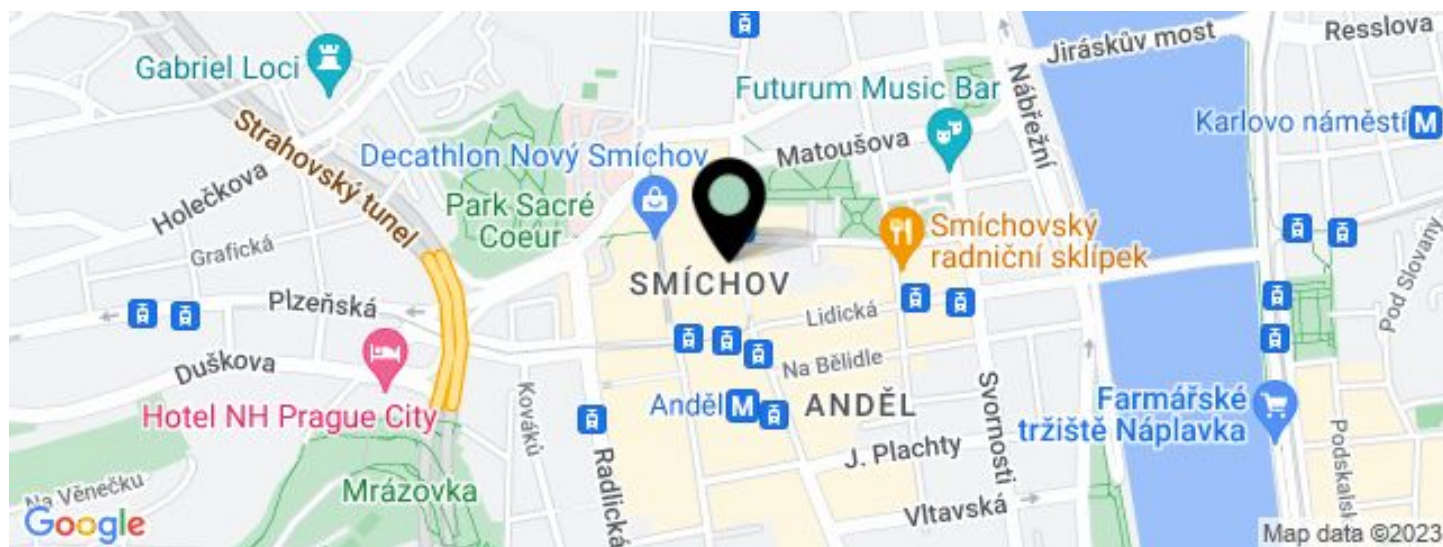
Office building

€ 16.70 - 17.50 / m² | CZK 418 - 438 / m²

313 m², Prague 5, Smíchov, Štefánikova



Office building

€ 16.70 - 17.50 / m² | CZK 418 - 438 / m²313 m², Prague 5, Smíchov, Štefánikova

UNIT	AVAILABLE AREA	SERVICES	PARKING	MONTHLY RENT
Office space, 6th floor + terrace	98 m ²	195 CZK monthly per m ²	EUR 125 / ps / month	€ 17.50 / m ²
Office space, 1st floor	215 m ²	195 CZK monthly per m ²	EUR 125 / ps / month	€ 16.70 / m ²

Office building

€ 16.70 - 17.50 / m² | CZK 418 - 438 / m²313 m², Prague 5, Smíchov, Štefánikova

Service price	195 CZK monthly per m ²
Total building area	5 334 m ²
Tenant consumption	—
Parking	125 EUR
Parking service charges	—
Parking ratio	—
Certification	—
PENB	C
Reference number	17653

Administrative building with modern office space for lease is located on the border of the Prague districts of Smíchov and Malá Strana. Attractive courtyard with a smaller apartment building. The architectural design of the building comes from the renowned studio D. A. Studio.

Location:

Excellent accessibility by car and public transportation—within walking distance of the Anděl metro station (line B), a number of tram and bus stops, and a train station. Easy connections to the Prague Ring Road, the D5 highway to Germany, and the Prague Václav Havel International Airport.

Features and services:

Central reception
24/7 security
Air-conditioning (fan coil units)
Openable windows
Suspended ceilings
Storage
Parking spaces

Rental and service charges listed without VAT. Lessee pays no commission.