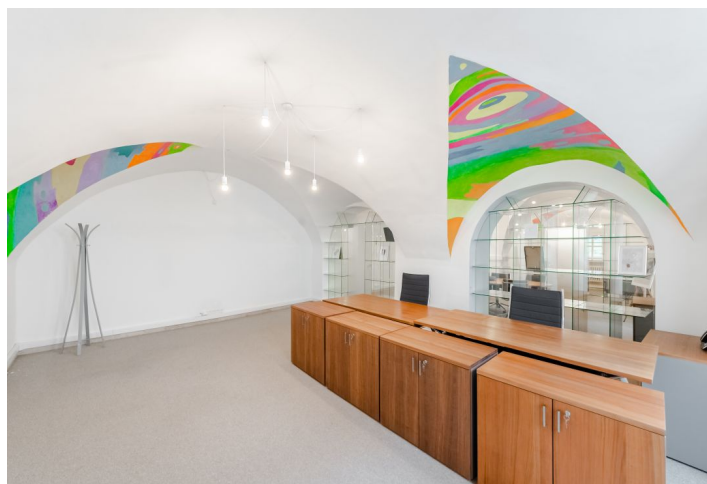


Office building

Rented

Prague 1, Nové Město, Voršilská



Office building

Rented

Prague 1, Nové Město, Voršilská

| | |
|-------------------------|------------------------------------|
| Service price | 113 CZK monthly per m ² |
| Total building area | 372 m ² |
| Tenant consumption | — |
| Parking | - |
| Parking service charges | — |
| Parking ratio | — |
| Certification | — |
| PENB | G |
| Reference number | 17614 |

Completely renovated historic building offers office space for lease. The building is located near the National Theatre, a few minutes walk from the metro station Národní třída (line B). Kitchenette, alarm, air conditioning, meeting rooms or 1 parking space are available.

Location:

Great accessibility by public transport. Close to the tram stop Národní divadlo and metro station Národní třída (line B).

Features and Services:

Kitchenette
WC
Double wooden floors
Alarm
Lattices on the windows on the ground floor facing the street
Air conditioning
Conference room
1 parking space

Prices are listed without VAT. Lessee pays no commission.

Office building

Prague 1, Nové Město, Voršilská

Rented

