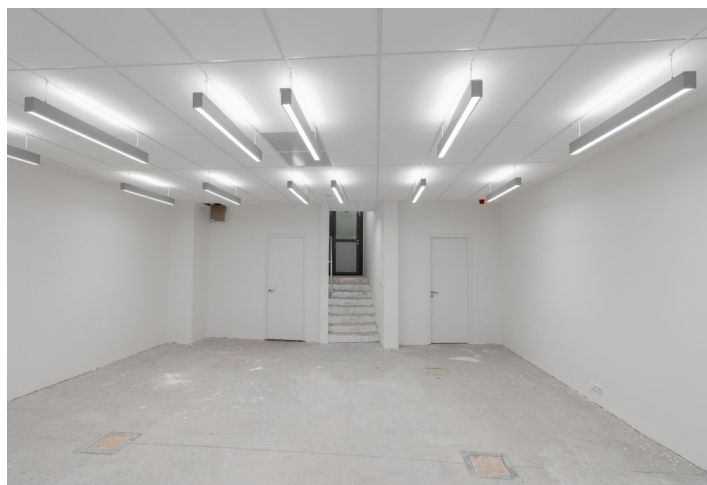


Office space

€ 23.00 / m² | CZK 575 / m²

Prague 1, Staré Město, Na příkopě



Office space

€ 23.00 / m² | CZK 575 / m²

Prague 1, Staré Město, Na příkopě

Service price	170 CZK monthly per m ²
Available area	124 m ²
Cellar	-
Parking	EUR 190 / pp / month
PENB	G
Reference number	17579

Office building situated at the most prestigious business address in Prague offers office space for lease. The building was created by converting and joining two houses from the years 1893 and 1865, and successfully combines classic and modern styles. It was possible to retain the historic facades and a large part of the Classicist inner rooms, combining them with new spaces. The round steel extension and extensive glazing allows for beautiful views of Prague's Old Town. It is the work of SHArchitects in cooperation with the organization for cultural heritage and monument preservation and won the prestigious "Interior of the Year" prize in 1997. Possibility of 1 parking space for every 150 sq. m of leasable area.

Location:

Easy access by public transport - the Náměstí Republiky (line B) and Můstek (line A, B) metro stations and tram stops are only a few minutes' walk away.

Features and Services:

24-hour reception and access to the building, the attractive reception area boasts an atrium complete with modern glass elevators and six galleries. Five terraces have been added to the front of the building, while four face the rear alley. Parking.

Rental and service charges are listed without VAT. Lessee pays no commission.

