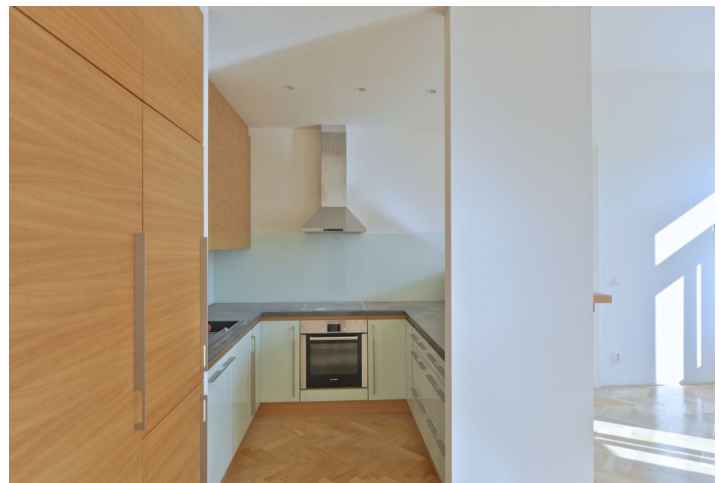
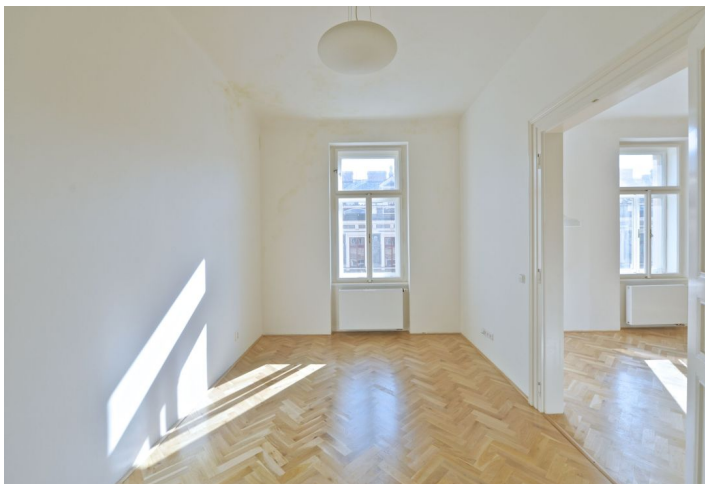


## Apartment Two-bedroom (3+kk)

Rented

101 m<sup>2</sup>, Prague 1, Nové Město, Jungmannova



## Apartment Two-bedroom (3+kk)

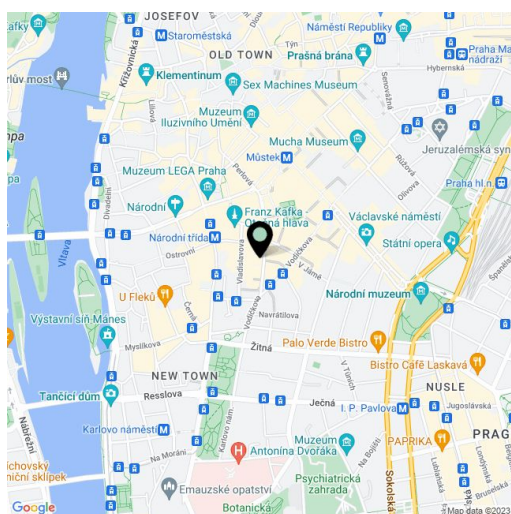
**Rented**101 m<sup>2</sup>, Prague 1, Nové Město, Jungmannova

Total area	101 m <sup>2</sup>
Parking	-
Cellar	Yes
PENB	G
Reference number	17569
Available from	Immediately

Fully refurbished 2-bedroom flat on the fourth floor of a completely reconstructed traditional building with a new lift and preserved original features. Prime location just minutes from Wenceslas Square and within walking distance of all three Prague metro lines.

The interior includes a bright living room with a fully fitted open plan kitchen and dining area, two bedrooms - one with a walk-in closet, full bathroom, guest toilet, and a large entry hall.

Preserved original details, large windows, high ceilings, wood parquet floors, security entry door, gas boiler, dishwasher, video entry phone, cellar. Common building charges CZK 700/person/month. Electricity and gas will be transferred to the tenant.



\* Area of the unit according to the Civil Code. The area consists of the sum total area of the entire unit bounded by perimeter walls.