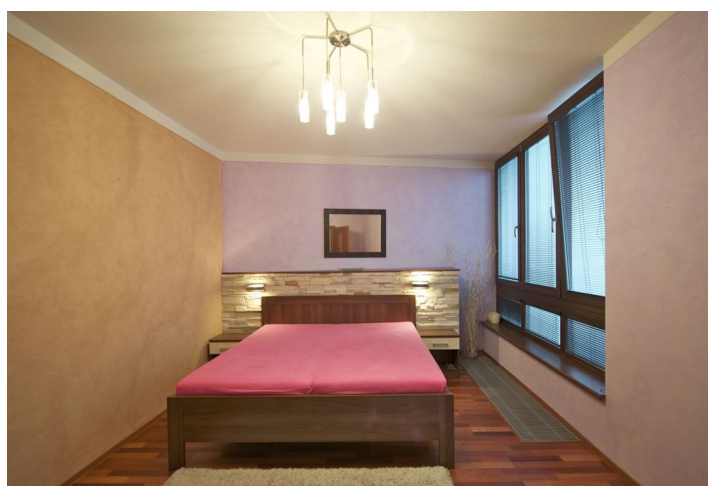


Apartment Three-bedroom (4+kk)

Sold

96 m², Prague 4, Michle, U Michelského mlýna



Apartment Three-bedroom (4+kk)

Sold96 m², Prague 4, Michle, U Michelského mlýna

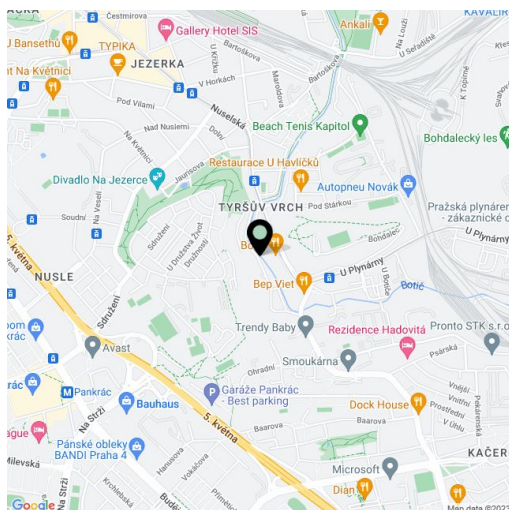
| | |
|-------------------------|------------------------------------|
| Total area | 102 m ² |
| Floor area* | 96 m ² |
| Balcony | 6 m ² |
| Parking | One garage parking space included. |
| Garage | Yes |
| Cellar | Yes |
| PENB | G |
| Reference number | 17494 |

Modern apartment with two balconies on the 1st floor of a new residential development with elevator in a quiet location close to the Botič creek in Prague 4, with abundance of greenery and excellent access to the city center.

This spacious apartment consists of a living room with a fully fitted kitchen and a balcony, 3 bedrooms - one with a closet, two with a balcony, a bathroom with a bathtub and shower stall, a toilet, a utility room and entry hall. Wooden floors, French windows, security door, blinds, built-in appliances, a washing machine, two TVs, video entry phone, alarm. One garage parking space included in the price.

Quiet green location, public amenities within reach.

Interior 96 m², balconies 6 m², cellar 10 m².



* Area of the unit according to the Civil Code. The area consists of the sum total area of the entire unit bounded by perimeter walls.