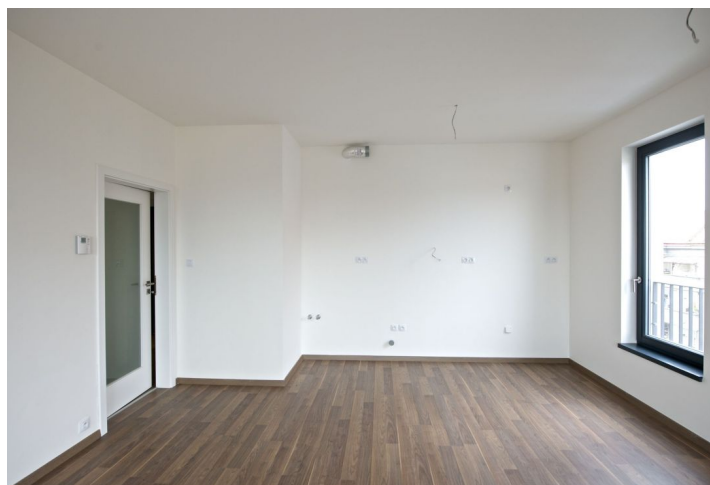


Apartment Two-bedroom (3+kk)

Sold

64 m², Prague 8, Libeň, V Mezihorí



Apartment Two-bedroom (3+kk)

Sold64 m², Prague 8, Libeň, V Mezihorí

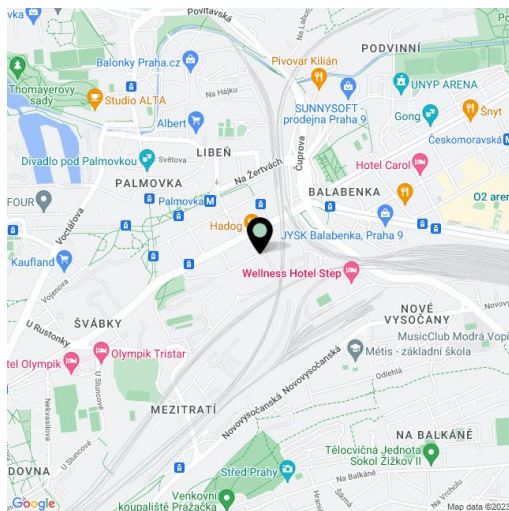
Total area	78 m ²
Floor area*	64 m ²
Balcony	14 m ²
Parking	300 000
Garage	Yes
Cellar	Yes
PENB	G
Reference number	17383

New apartment with balcony on the 6th floor of a residential complex with a central atrium, water area and a children's corner, just five minutes from the metro station, making the city center accessible.

The layout offers an open-plan living room with a dining room and kitchen corner, 2 bedrooms, a spacious bathroom with bathtub, a separate toilet with wash basin, a utility room with a cable for a washing machine and an entry hall with storage space. All main rooms have an access to the balcony with orientation to the east.

The apartment is located in a newly built apartment building on a quiet one-way street and offers a private patio, small ornamental lakes, pergola with summer kitchen and seating area, and a children's play area with a small private playground for residents only. 5 minutes walk to a metro station, all amenities within walking distance.

Garage parking space at extra cost. Interior 73.09 m², balcony 13.78 m².



* Area of the unit according to the Civil Code. The area consists of the sum total area of the entire unit bounded by perimeter walls.

Apartment Two-bedroom (3+kk)

Sold

64 m², Prague 8, Libeň, V Mezihorí

