

## House Five-bedroom (6+1)

Sold

340 m<sup>2</sup>, Prague 8, Dolní Chabry, Jana Marka



# House Five-bedroom (6+1)

**Sold**340 m<sup>2</sup>, Prague 8, Dolní Chabry, Jana Marka

Plot	809 m <sup>2</sup>
Foot print	207 m <sup>2</sup>
Garden	602 m <sup>2</sup>
Parking	Yes
Garage	Yes
Cellar	-
PENB	A
Reference number	17319

**Newly built passive family house located in a pleasant and quiet area of Prague 8 - Dolní Chabry, near Čimický Park and Dražanské Valley, with good access to the city center.**

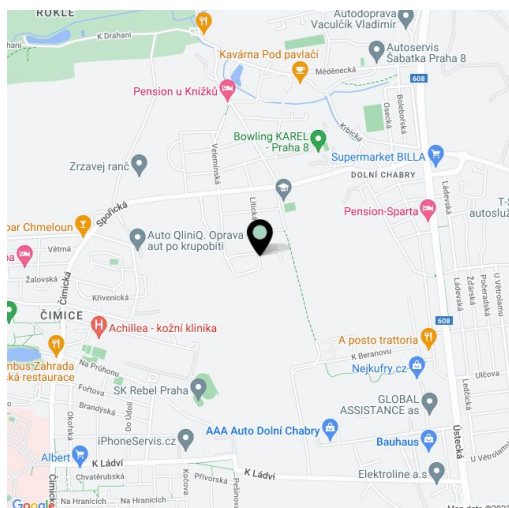
The ground floor of the house offers a spacious living room with separate kitchen, study room, single garage and a toilet. The upper floor consists of 4 bedrooms and 2 bathrooms with a toilet. **A client can have interior dispositions finished according to his wishes.**

Internal finishings include: intelligent power distribution system, STA, data and EZS, water and sewerage system, preparation for air-conditioning in all rooms, heated floor in the whole house except garage + final surface for laying floor materials. Heating pump and recuperation system - distribution in all rooms. Preparation for final paint. Roof - blown foam - insulation.

Exterior construction of the house is complete including insulation, facade, triple-glazed windows with wooden frames, wooden door, and tiles from natural stone. Preparation for outdoor window blinds.

The house is just a few minutes by bus to the Kobylisy metro station. Excellent connection to the D8 highway, which runs between Teplice and Mladá Boleslav. All public amenities in the area - a kindergarten and elementary school, Tesco shopping center, Globus.

Interior 340 m<sup>2</sup>, garden 602 m<sup>2</sup>. The purchase price includes VAT in the current state.

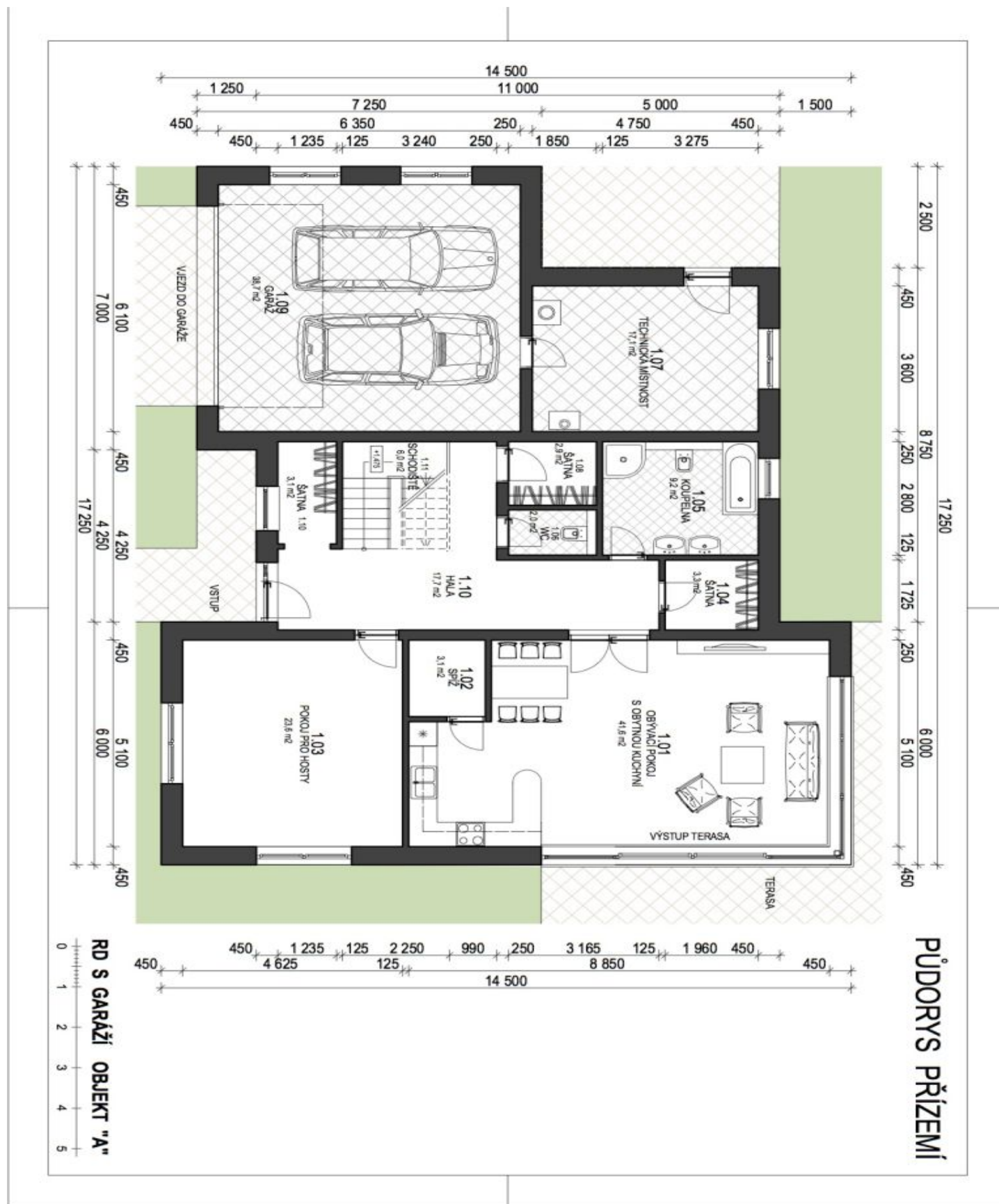




# House Five-bedroom (6+1)

Sold

340 m<sup>2</sup>, Prague 8, Dolní Chabry, Jana Marka



# House Five-bedroom (6+1)

Sold

340 m<sup>2</sup>, Prague 8, Dolní Chabry, Jana Marka

