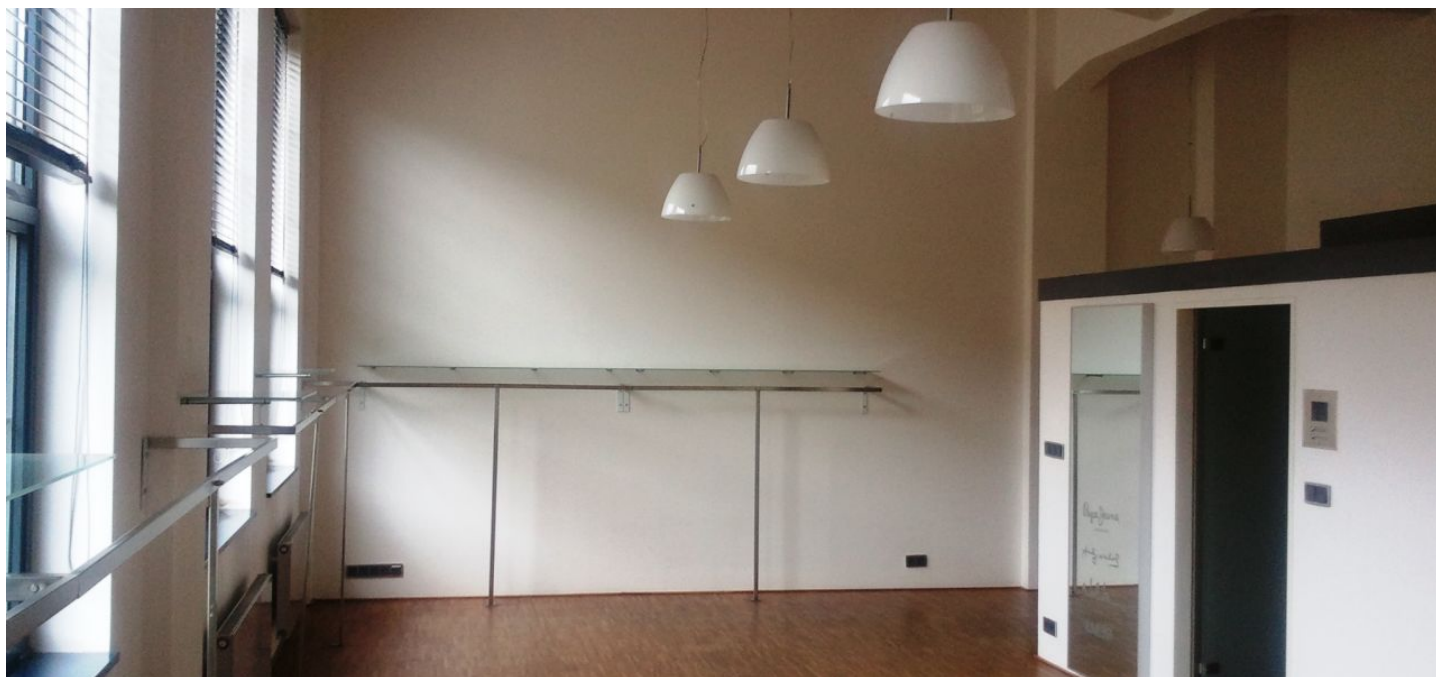




Office space

Prague 5, Smíchov, Křížová

Sold



**Office space**

Prague 5, Smíchov, Křížová

Sold

Available area	98 m ²
Tenant consumption	—
Parking	One garage parking space
Parking service charges	—
Parking ratio	—
Certification	—
PENB	G
Reference number	17293

This loft studio with a gallery, suitable for use as an office space, is situated on the 5th floor of a renovated factory building from 1900 that is complete with a lift, and offers distinctive architecture, high ribbed ceilings and large windows. The apartment is located near the quiet Prokop Valley.

The entire interior is designed as an open space with an entrance hall, living room, fully equipped kitchenet, bathroom with shower and separate toilet. The open gallery offers a work area with room for two, a bedroom with a double bed and an area suitable for storage space, etc.

Features include blinds, security doors, Wi-Fi Internet, data networks, cable TV connection UPC, video intercom. Garage space available at extra cost.

Interior 98 m² (lower floor 75,64 m², gallery 22,2 m²).

