

## Apartment Four-bedroom (5+1)

Ask for price

436 m<sup>2</sup>, Prague 5, Smíchov, Janáčkovo nábřeží



## Apartment Four-bedroom (5+1)

Ask for price

436 m<sup>2</sup>, Prague 5, Smíchov, Janáčkovo nábřeží

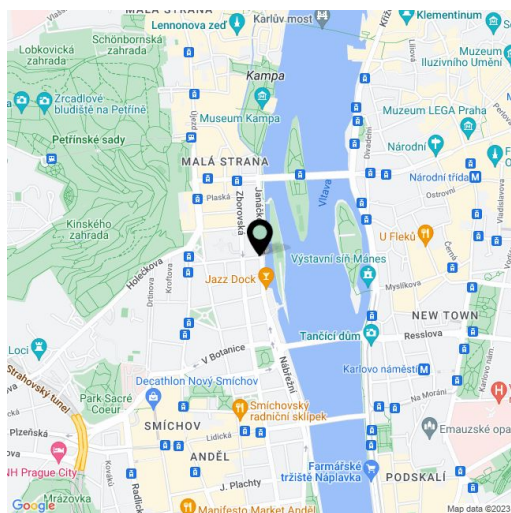
Total area	460 m <sup>2</sup>
Floor area*	436 m <sup>2</sup>
Balcony	24 m <sup>2</sup>
Parking	3 000 000
Garage	Yes
Cellar	Yes
PENB	G
Reference number	17292

Located on the Vltava riverbank, this representative apartment with a balcony spans across the 3rd floor of a Neoclassical building that is undergoing a complete reconstruction. The building, from which panoramic views of the river and Prague landmarks such as Týn Church, Old Town Tower, Charles Bridge and Vyšehrad can be seen, will offer concierge service and private onsite parking.

The interior of the apartment is fully flexible according to the individual wishes of the client. The apartment is offered in a shell and core state, i.e. before completion of the final surfaces, utilities, possibility of completion of the apartment by a developer.

Close to the French School, a children's playground on Dětský ostrov Island, volleyball and football courts, and mini golf. Easily accessible by public transport and with all amenities nearby.

Floor space 415.94 m<sup>2</sup>, balcony 25.17 m<sup>2</sup>, cellar 19.19 m<sup>2</sup>. **The purchase price includes 3 garage parking spaces.**



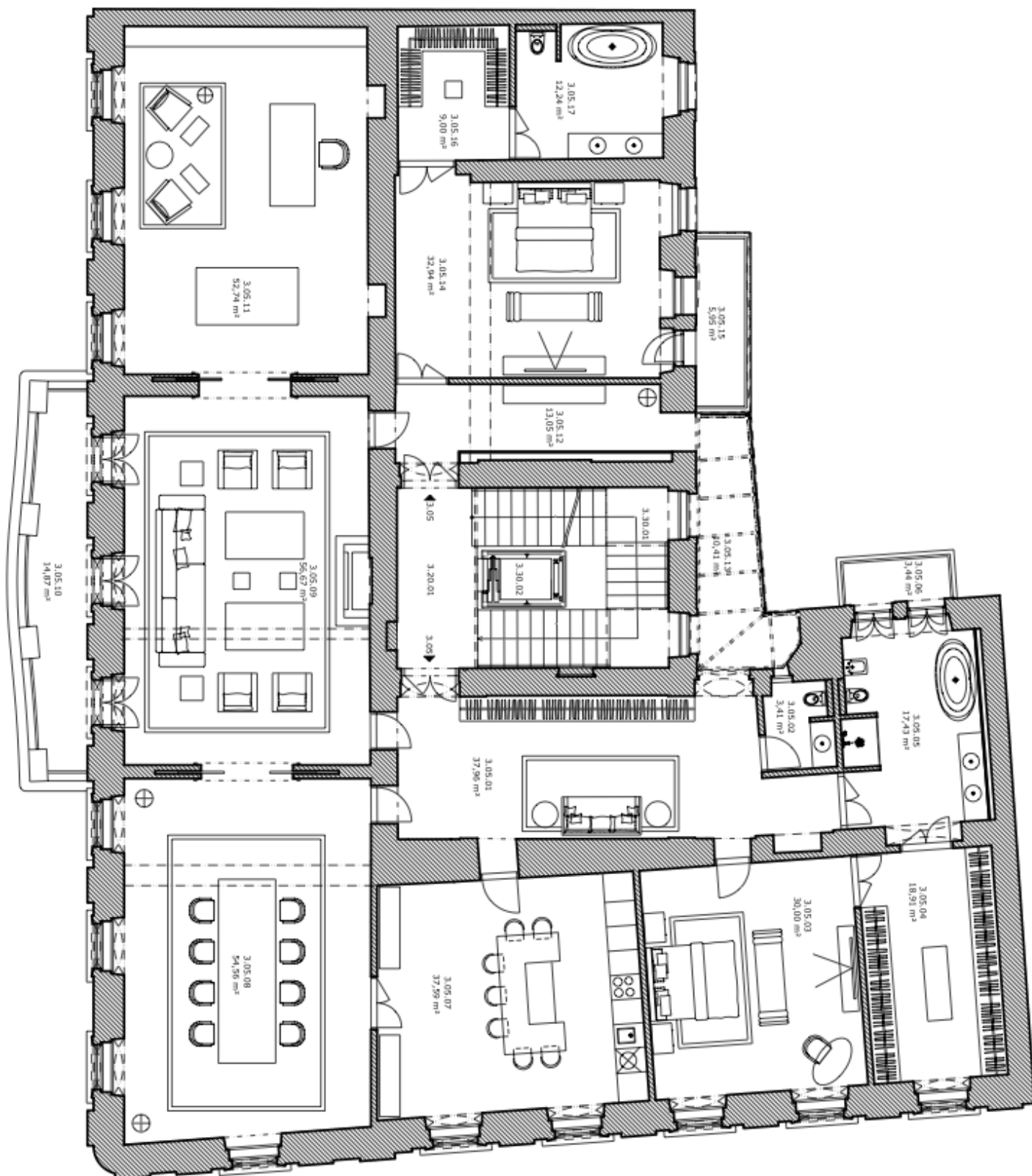
\* Area of the unit according to the Civil Code. The area consists of the sum total area of the entire unit bounded by perimeter walls.



## Apartment Four-bedroom (5+1)

Ask for price

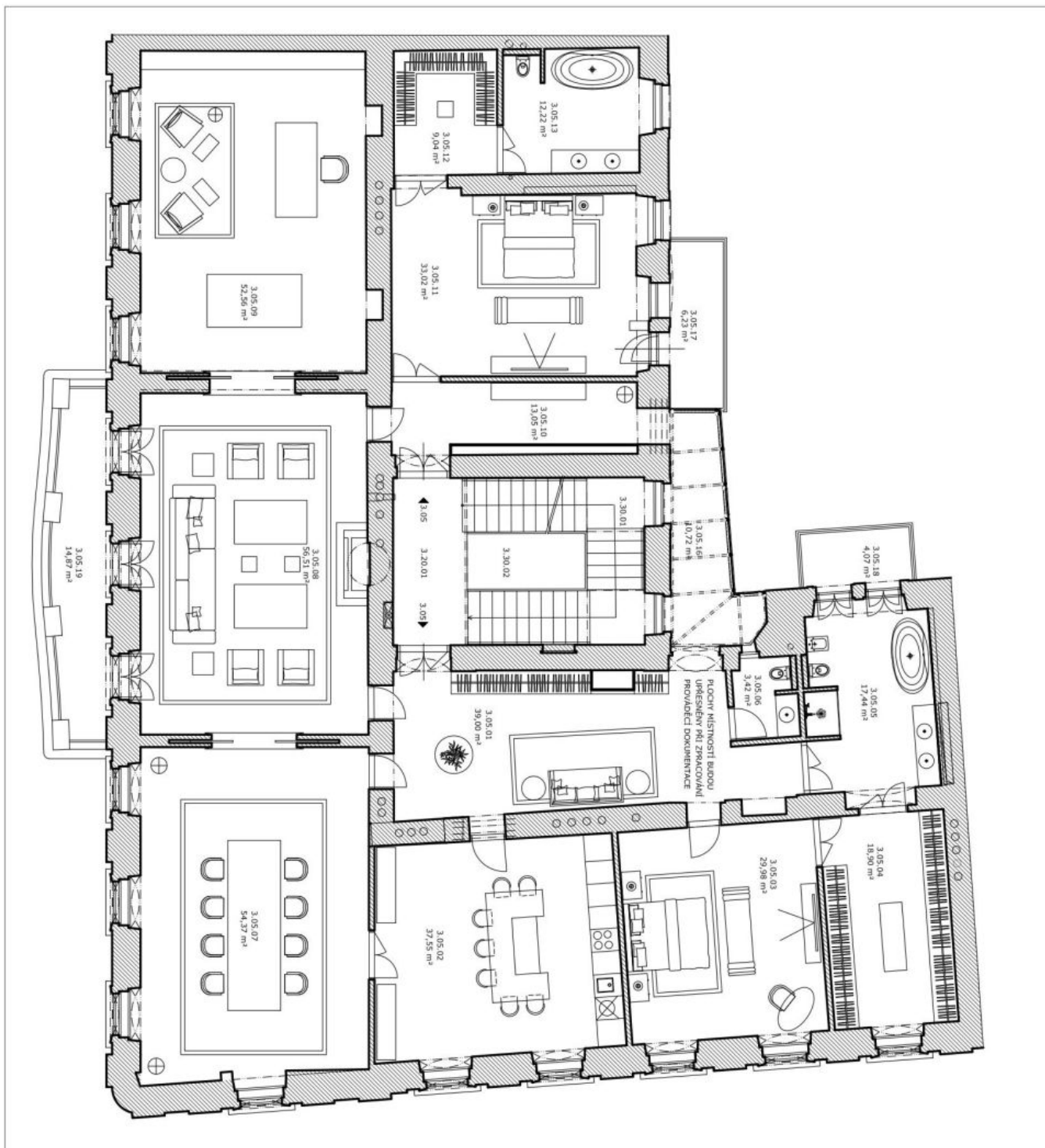
436 m<sup>2</sup>, Prague 5, Smíchov, Janáčkovo nábřeží



# Apartment Four-bedroom (5+1)

Ask for price

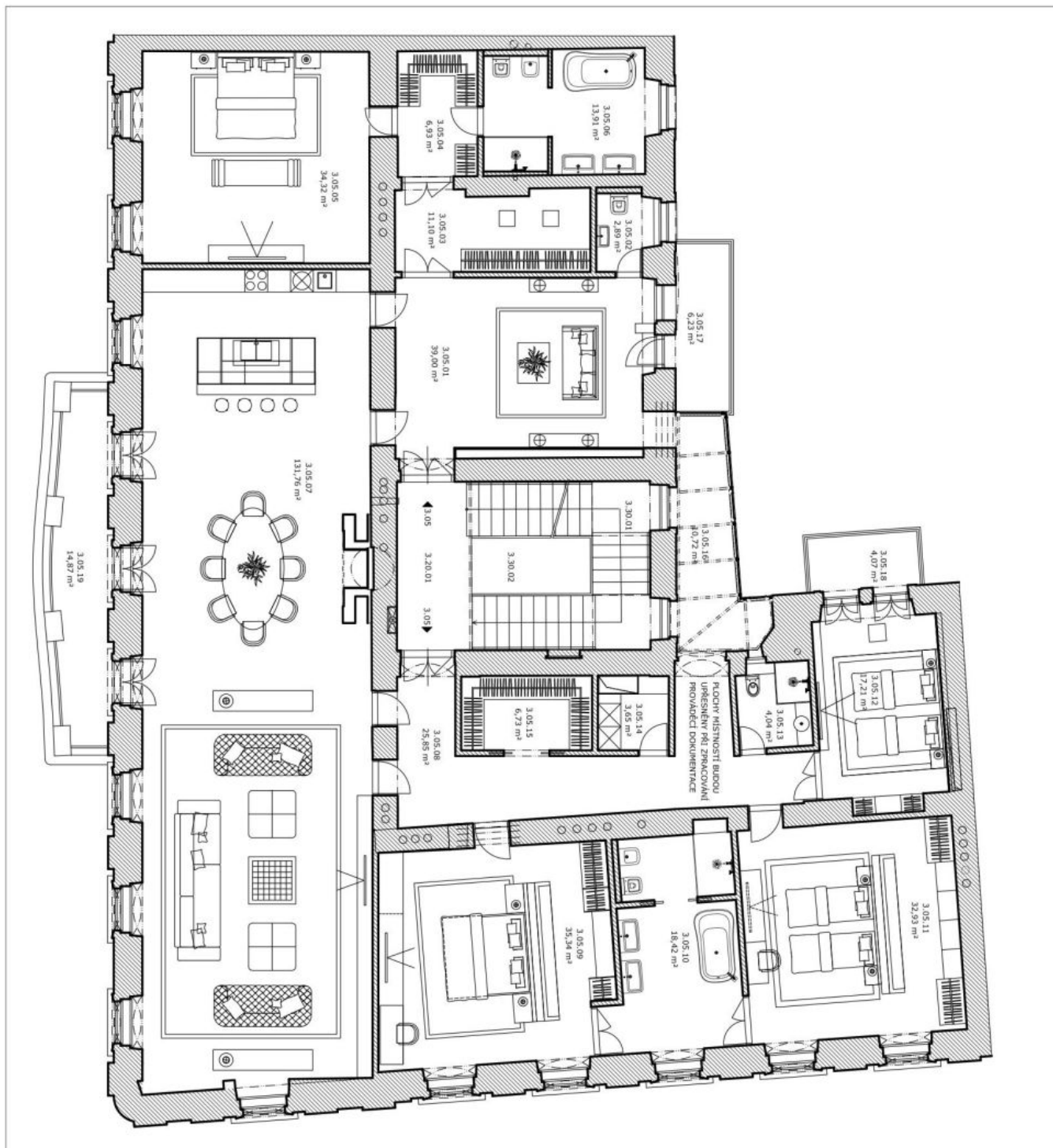
436 m<sup>2</sup>, Prague 5, Smíchov, Janáčkovo nábřeží



## Apartment Four-bedroom (5+1)

Ask for price

436 m<sup>2</sup>, Prague 5, Smíchov, Janáčkovo nábřeží

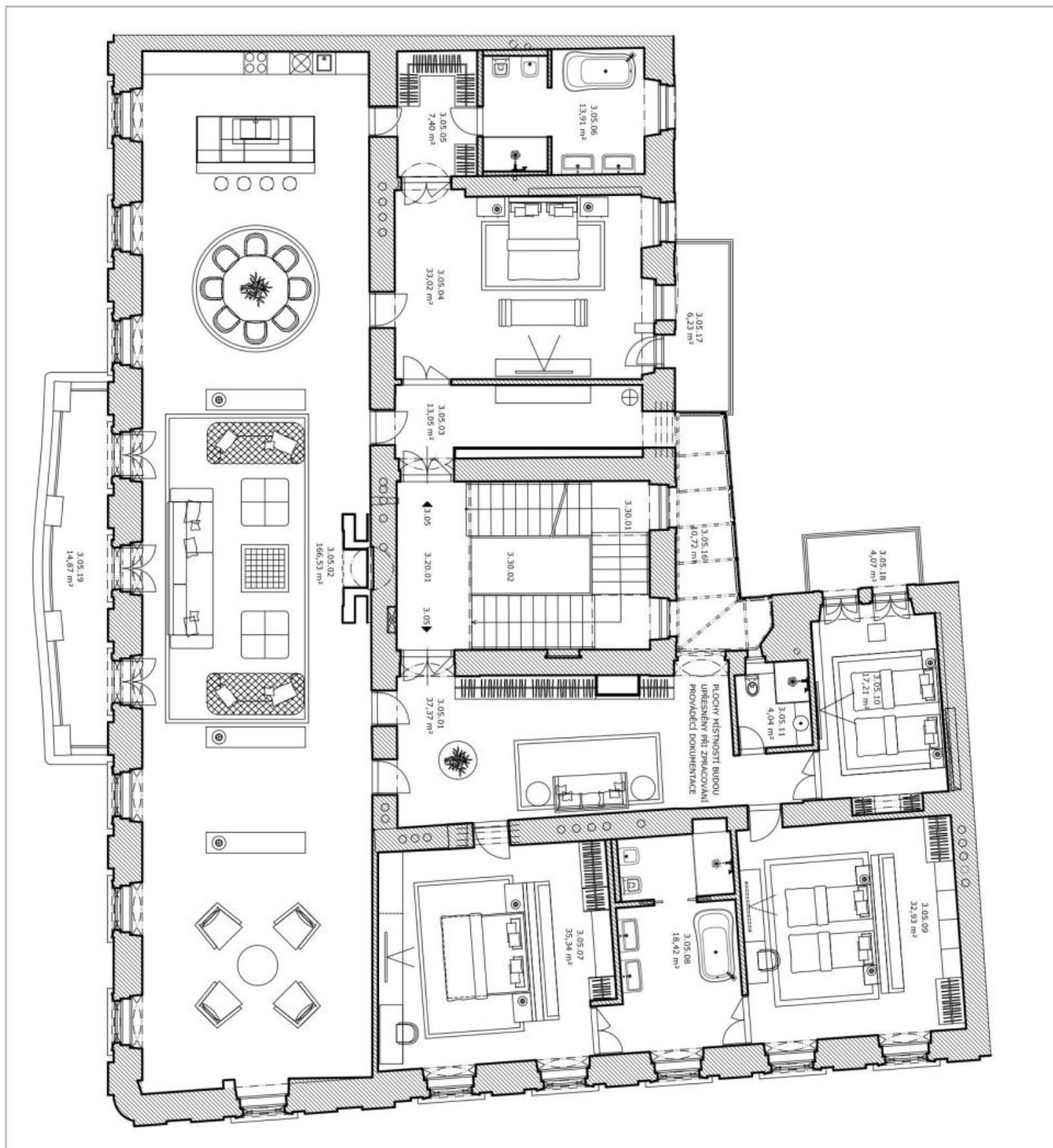




# Apartment Four-bedroom (5+1)

Ask for price

436 m<sup>2</sup>, Prague 5, Smíchov, Janáčkovo nábřeží



## Apartment Four-bedroom (5+1)

Ask for price

436 m<sup>2</sup>, Prague 5, Smíchov, Janáčkovo nábřeží

