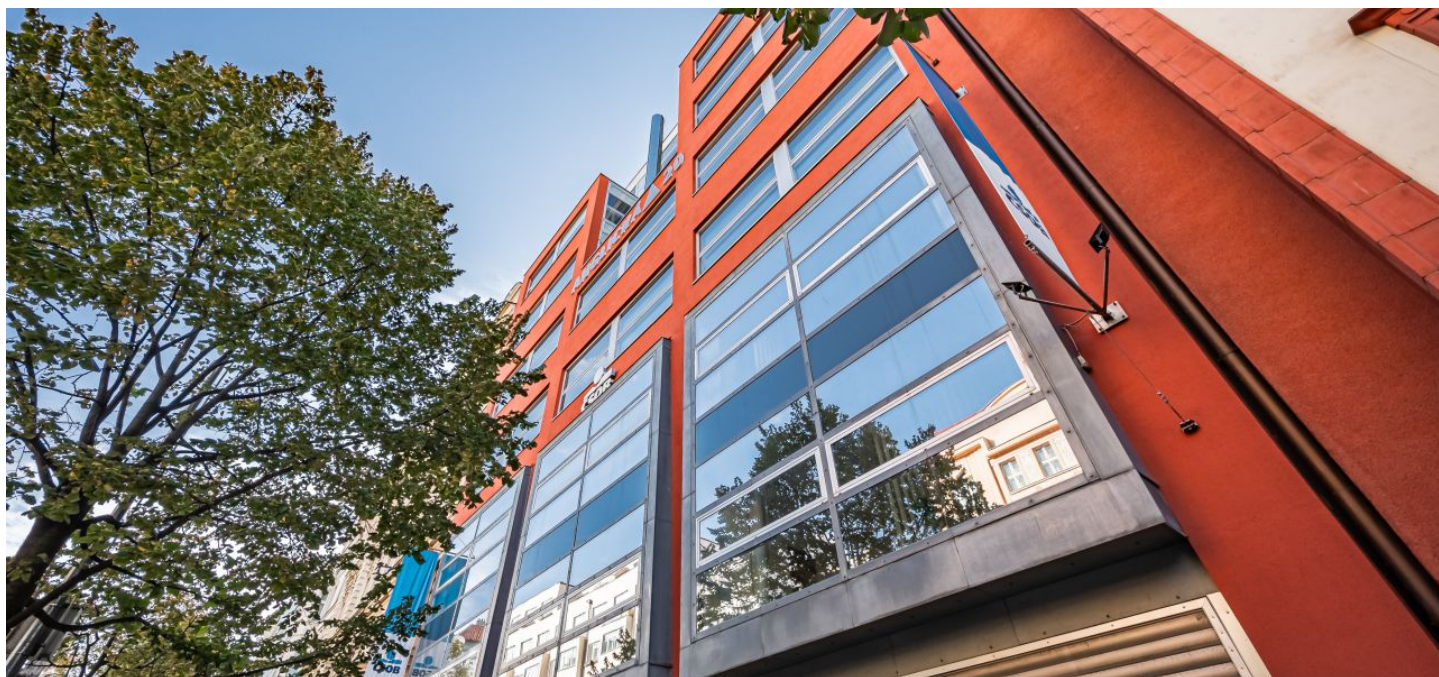


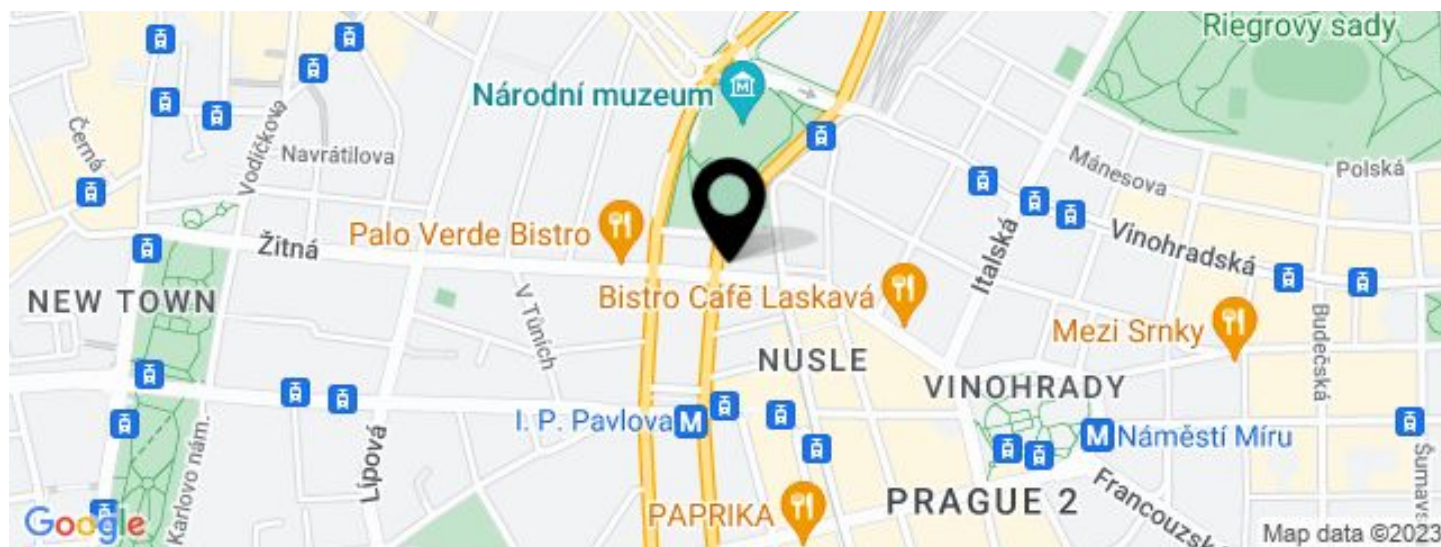
Office building

€ 14.59 / m² | CZK 365 / m²

188 m², Prague 2, Vinohrady, Anglická



Office building

€ 14.59 / m² | CZK 365 / m²188 m², Prague 2, Vinohrady, Anglická

| UNIT | AVAILABLE AREA | SERVICES | PARKING | MONTHLY RENT |
|-------------------------|--------------------|---------------------------------------|------------------------|--------------------------|
| Office space, 6th floor | 188 m ² | 130 CZK monthly per m ² | CZK 3 300 / ps / month | € 14.59 / m ² |

Office building**€ 14.59 / m² | CZK 365 / m²**188 m², Prague 2, Vinohrady, Anglická

| | |
|-------------------------|------------------------------------|
| Service price | 130 CZK monthly per m ² |
| Total building area | 2 942 m ² |
| Tenant consumption | — |
| Parking | 3 300 CZK |
| Parking service charges | — |
| Parking ratio | — |
| Certification | — |
| PENB | C |
| Reference number | 17280 |

Office building with office space for lease, located in an attractive location in Vinohrady. Shared terrace on the top floor and garage parking spaces. The entrance hall of the building has been completely renovated.






Location:

Great public transport access - within easy reach of Náměstí Míru metro station (line A) and I. P. Pavlova (line C) and tram connections. Proximity to the main road with direct connection to D1.

Features and Services:

Terrace
Parking spaces in the building
Entrance hall
24-hour camera system
Magnetic card entry
Floor covering
Repainting

Rental and service charges listed without VAT. Lessee pays no commission

| | | |
|---|-------------|-------------------------|
|  | OFFICE AREA | cca. 180 m ² |
|  | OFFICE AREA | cca. 182 m ² |
|  | COMMON AREA | cca. 20 m ² |
|  | SHARED AREA | cca. 16 m ² |
|  | TERRACE | cca. 5 m ² |

(7.NP)

6th FLOOR

