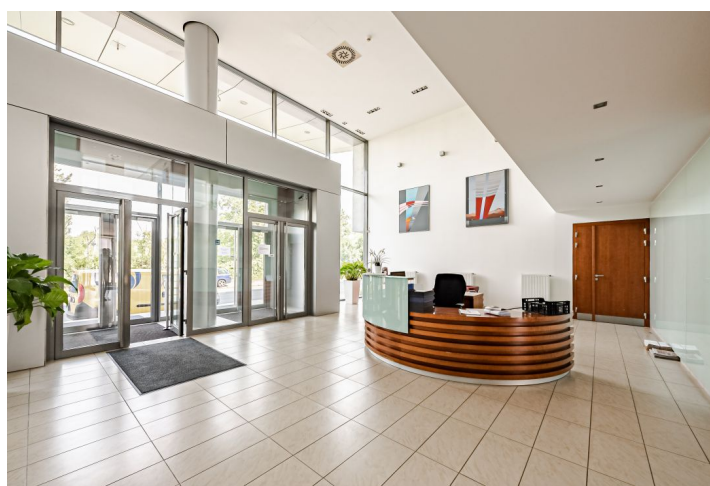
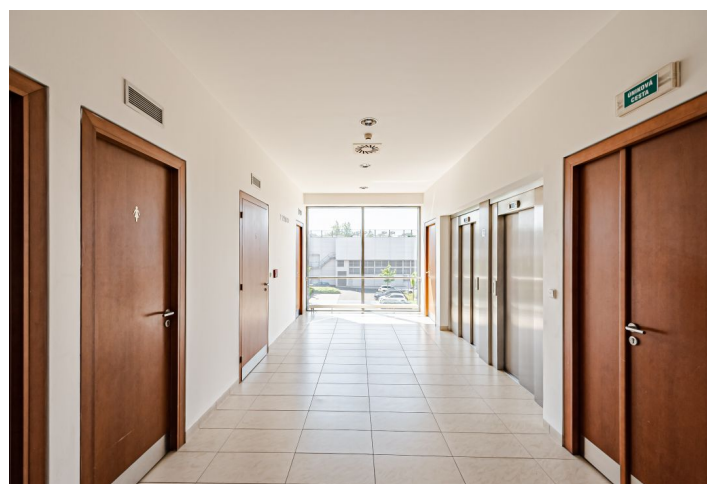


Office space

Rented

Prague 3, Strašnice, U nákladového nádraží



Office space

Rented

Prague 3, Strašnice, U nákladového nádraží

| | |
|------------------|------------------------------------|
| Service price | 100 CZK monthly per m ² |
| Available area | 193 m ² |
| Cellar | - |
| Parking | EUR 75 / ps / month |
| PENB | D |
| Reference number | 17247 |

Spacious bright offices for lease on the 2nd floor of a business park, which was completed in 2003 and consists of four office buildings in Prague 3 - Strašnice. Available storage space or bistro, restaurant and fitness center. The premises are air conditioned, have openable windows, own kitchen, storage and server room.

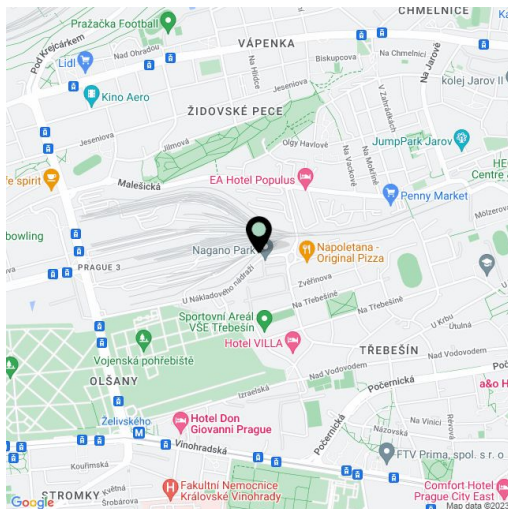
Location:

The building is easily accessible by car and public transport - bus and tram stops are nearby. Želivského metro station (line A) is about a 15-minute walk away.

Features and Services:

- Central reception
- Building security 24/7
- Data center on site
- Intelligent building management system
- Building management and facility management
- Meeting room
- High speed elevators
- Air conditioning
- Lowered ceilings
- Storage space
- Bistro, restaurant and fitness center
- Guarded parking
- Openable windows

Rental and service charges listed without VAT. Lessee pays no commission.



Office space

Rented

Prague 3, Strašnice, U nákladového nádraží

