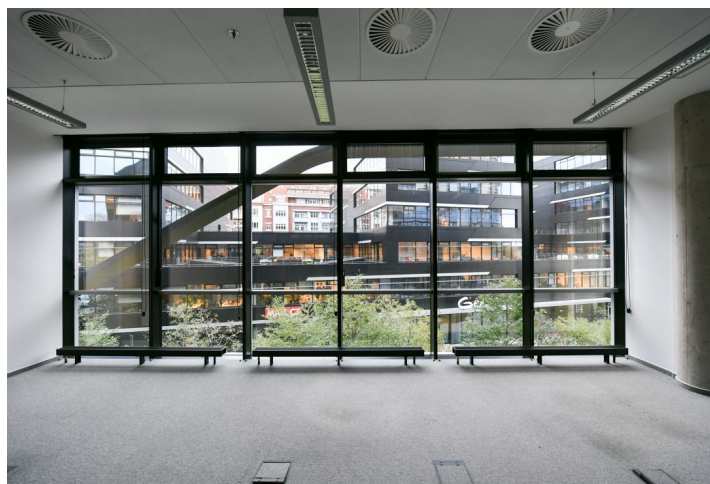
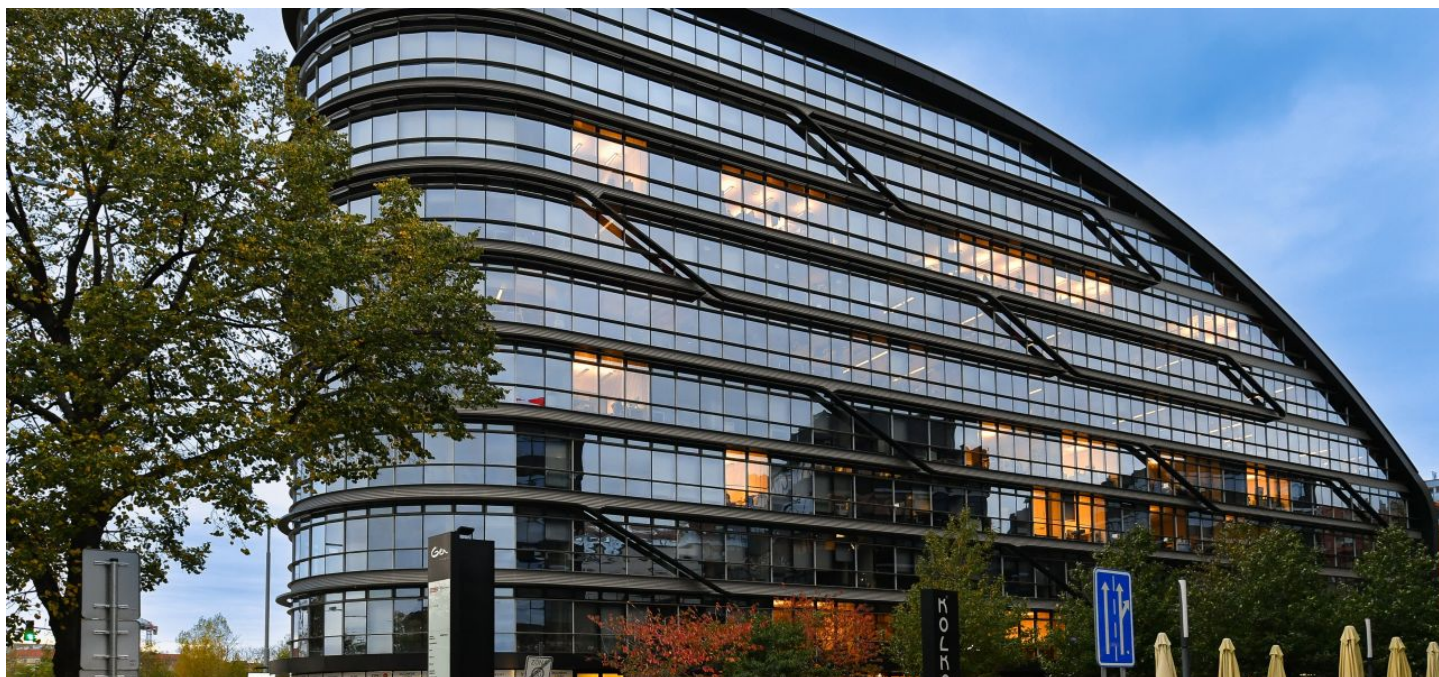


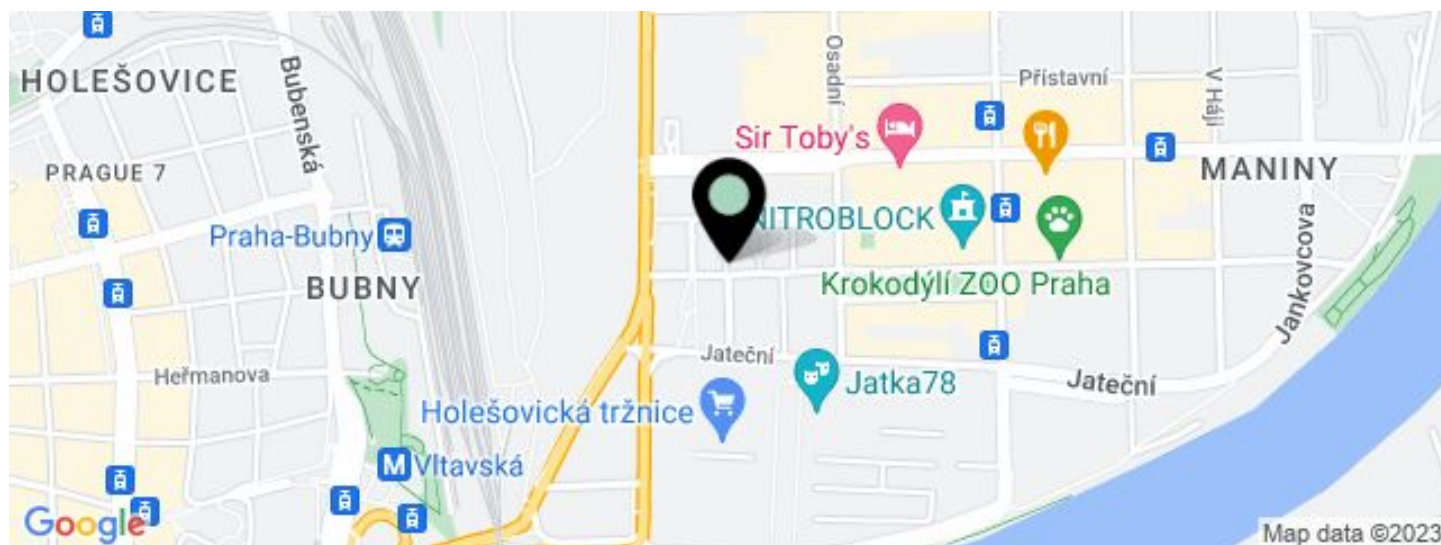
Office building

€ 13.95 - 17.95 / m² | CZK 348 - 448 / m²

1722 m², Prague 7, Holešovice, U Garáží



Office building

€ 13.95 - 17.95 / m² | CZK 348 - 448 / m²1722 m², Prague 7, Holešovice, U Garáží

UNIT	AVAILABLE AREA	SERVICES	PARKING	MONTHLY RENT
Office space, 4th floor + terrace	436 m ²	130 CZK monthly per m ²	EUR 120 / pp / month	€ 13.95 - 15.95 / m ²
Retail space	265 m ²	100 CZK monthly per m ²	EUR 120 / ps / month	€ 15.95 - 17.95 / m ²

Office building

€ 13.95 - 17.95 / m² | CZK 348 - 448 / m²1722 m², Prague 7, Holešovice, U Garáží

Service price	120 CZK monthly per m ²
Total building area	9 376 m ²
Tenant consumption	—
Parking	120 EUR
Parking service charges	290
Parking ratio	—
Certification	—
PENB	C
Reference number	17103

Original modern architectural designed office building complex. The building allows for a simple and flexible floor space design, meeting the requirements of both large and smaller companies. The building will provide a leasable area of more than 22.000 square metres, including retail space for shops and service providers on the ground floor of the building. A car park for approximately 190 cars will be available in the basement.

Location:

The building is located at the intersection of the Argentinská, Tusarova and Jateční streets, in the central part of Holešovice (Prague 7) and is easily accessible by car by turning off Argentinská Street. There is also a nearby tram stop and an exit from the Vltavská underground station.

Features and services:

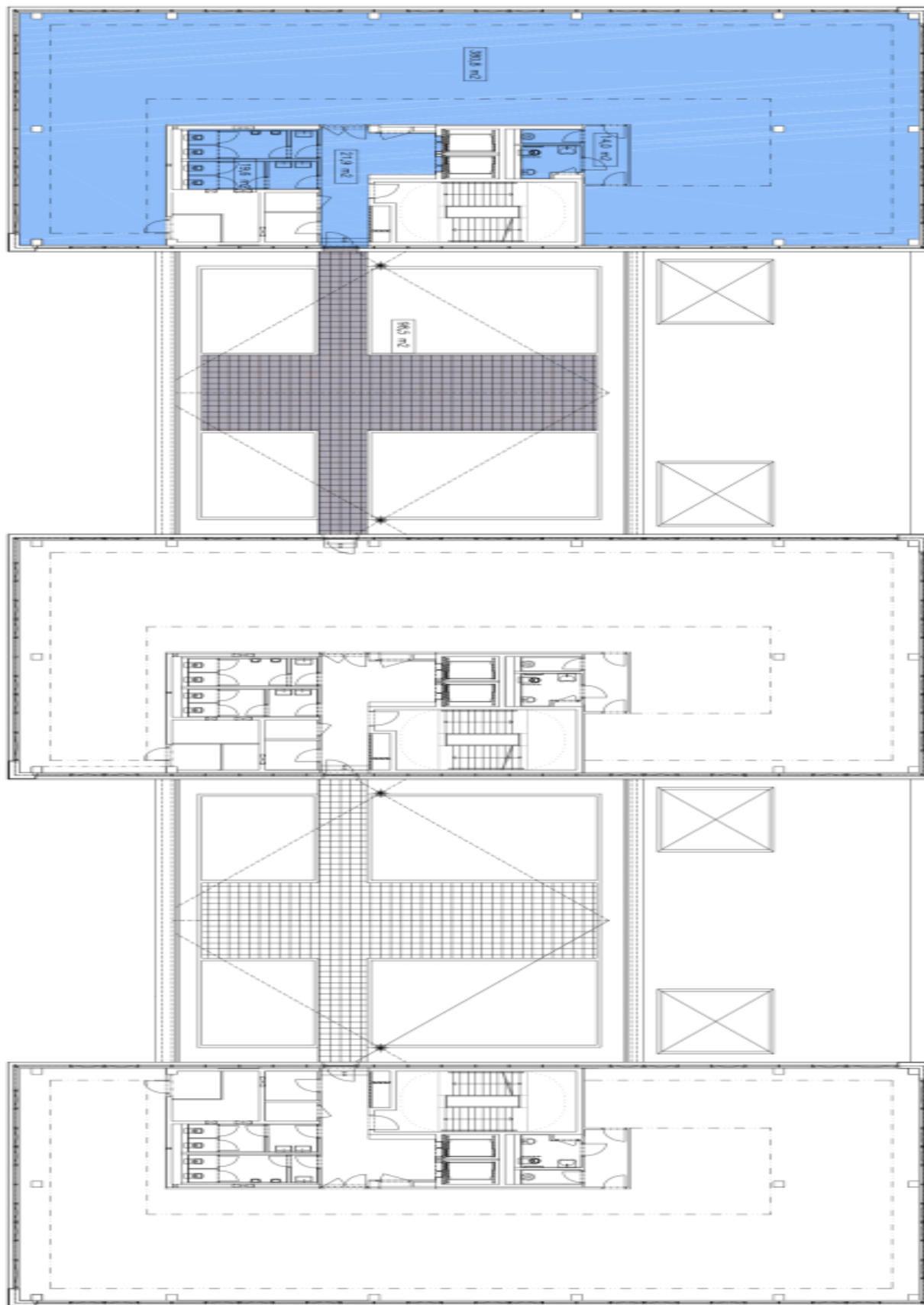
Air conditioning
Clear height 3 m
Openable windows
Roof terraces
Parking space
Cafe, bistro, restaurant
Representative reception
Kolárna
Security 24/7
Underground garage
Intelligent building management system

Rental and service charges listed without VAT. Lessee pays no commission.

Office building

€ 13.95 - 17.95 / m² | CZK 348 - 448 / m²

1722 m², Prague 7, Holešovice, U Garáží



3. patro / 3rd floor

