

House Six-bedroom (7+kk)

Ask for price

468 m², Prague 6, Lysolaje, Starodvorská



House Six-bedroom (7+kk)

[Ask for price](#)468 m², Prague 6, Lysolaje, Starodvorská

Total area	468 m ²
Plot	1 057 m ²
Foot print	175 m ²
Garden	882 m ²
Floor area	383 m ²
Terrace	85 m ²
Parking	Garage for 3 cars
Garage	Yes
Cellar	Yes
PENB	C
Reference number	17086

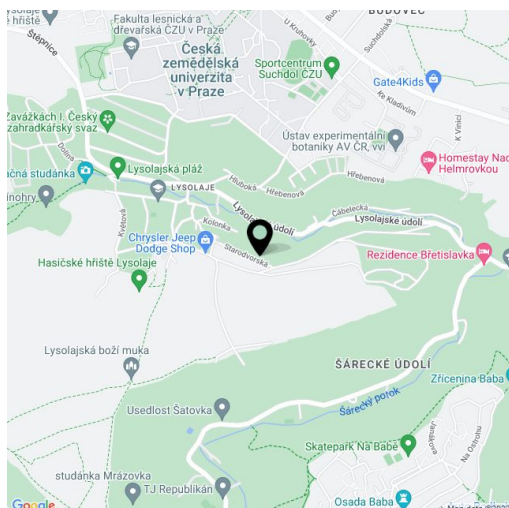
This multi-generational villa with beautiful views of the surrounding greenery is set in a gated residential complex on a private street situated in the Šárka nature reserve. The landscaped gardens offers absolute privacy and a pleasant seating area on the terrace.

The two-story house offers an entrance hall with **separate entrances to two individual units**. A spacious four-bedroom apartment offers an open plan kitchen with a dining area and a spacious living room with French windows and access to the terrace, an entrance hall with a walk-in wardrobe, and a toilet on the ground floor. An open gallery, a parent's bedroom with a private walk-in closet and bathroom, another 2 bedrooms with access to a balcony, a study, a shared bathroom, and a dressing room are on the upper level. The second one-bedroom unit consists of an entrance hall, a living room with a kitchen, a bedroom, a bathroom, and a walk-in closet. A study, wine cellar, bathroom, **garage for 3 cars**, boiler room, and a storage room are situated in the basement.

Facilities include **wooden floors, a fireplace, a preparation for the installation of photovoltaic panels**, an alarm system, and a Brotje gas boiler with a water tank.

The pleasant area adjacent to the Šárka Valley meets the demands of **housing close to nature** and at the same time provides **complete services and excellent public transport accessibility** nearby. A kindergarten, elementary school, supermarket, and several restaurants are all within walking distance. The nearby CULS sports complex and Šárka Lysolaje Park provide a wide range of leisure activities. Excellent accessibility to the city center thanks to the close bus connections in the direction of the Dejvická metro station.

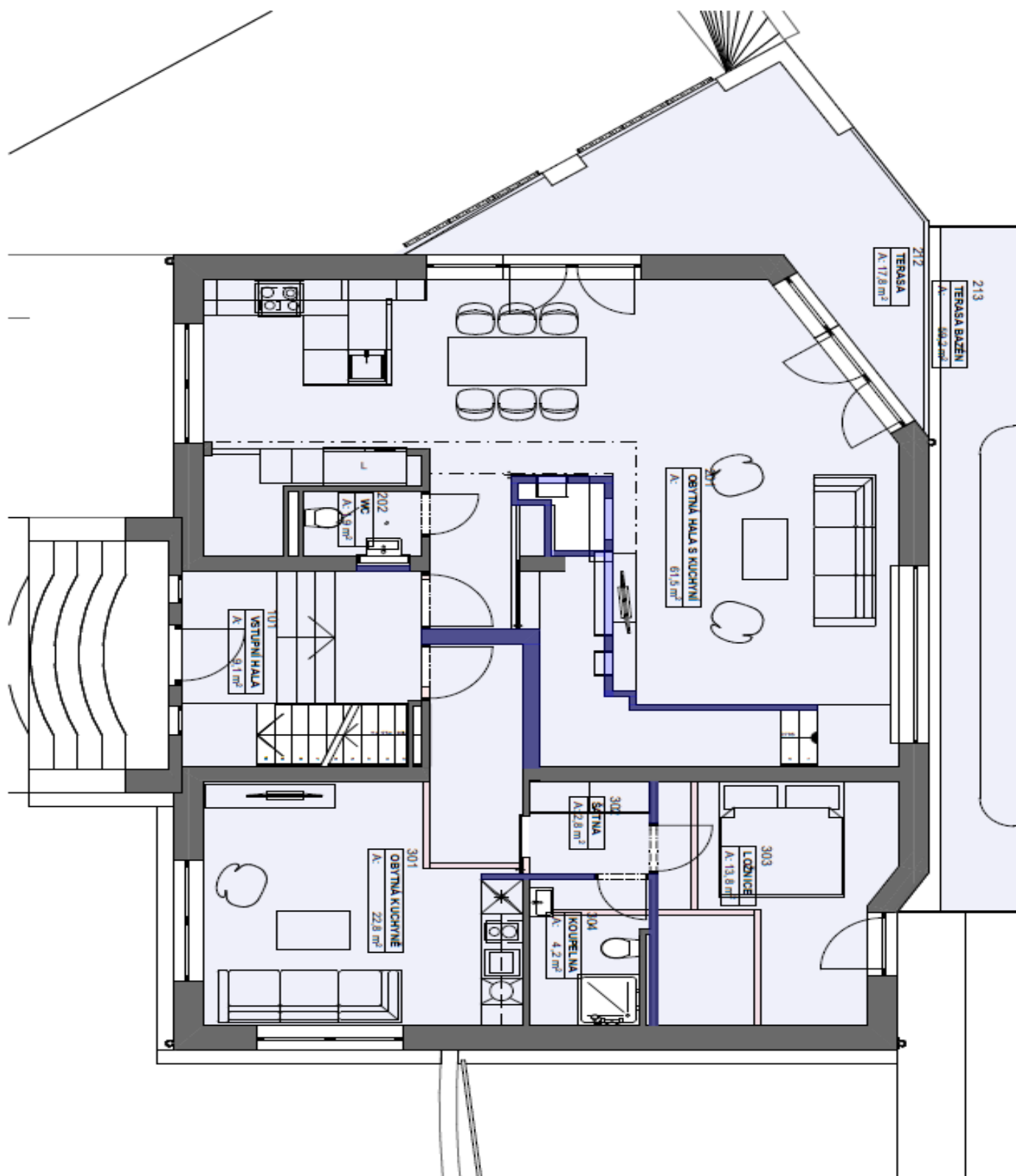
Usable area 468 m² (of which interior 383 m², terraces, and balconies 85.46 m²), garden 882 m², land 1,057 m².



House Six-bedroom (7+kk)

Ask for price

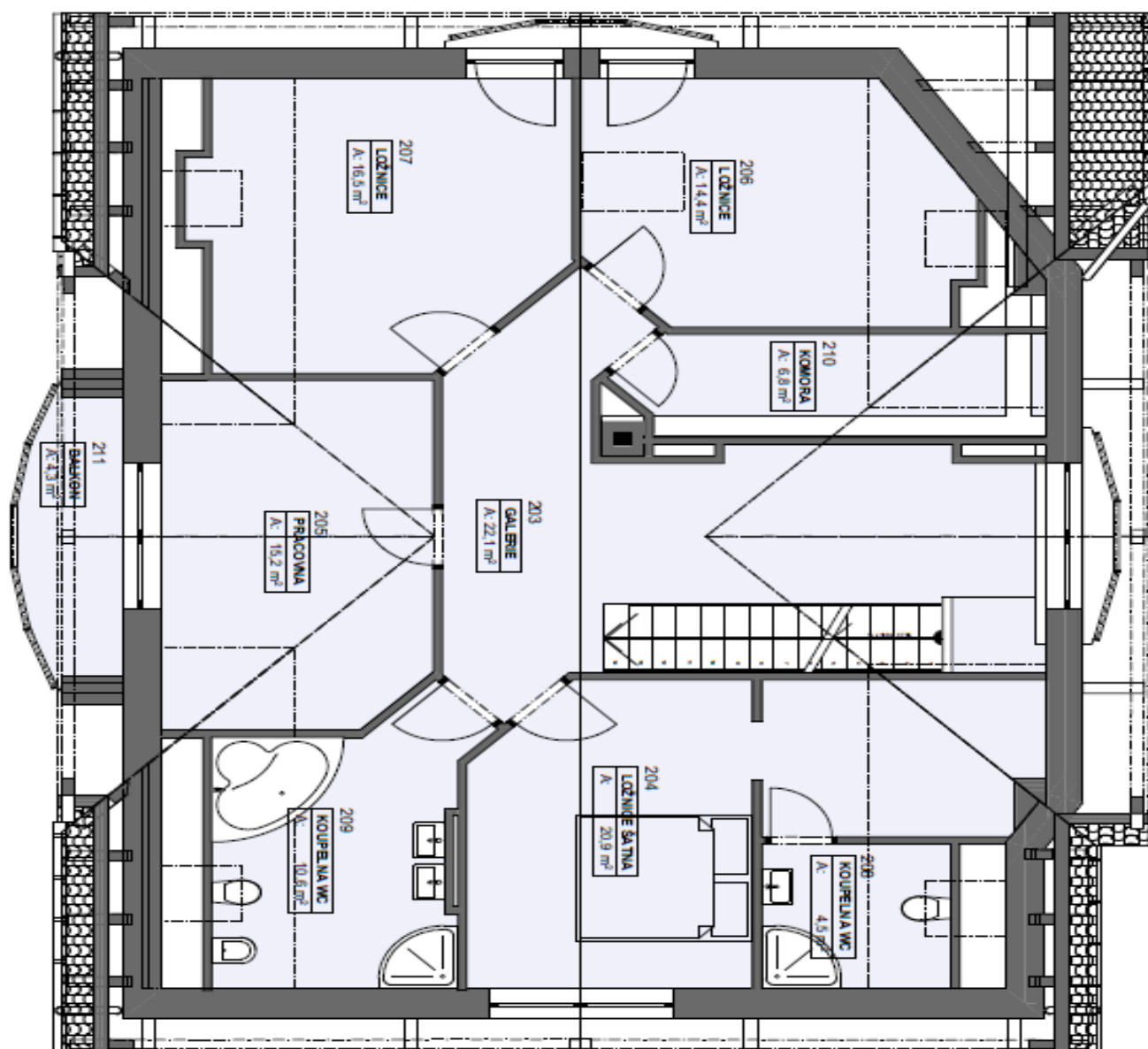
468 m², Prague 6, Lysolaje, Starodvorská



House Six-bedroom (7+kk)

Ask for price

468 m², Prague 6, Lysolaje, Starodvorská



House Six-bedroom (7+kk)

Ask for price

468 m², Prague 6, Lysolaje, Starodvorská

