

## Apartment Studio (1+kk)

Sold

40 m<sup>2</sup>, Prague 1, Staré Město, Jungmannovo náměstí



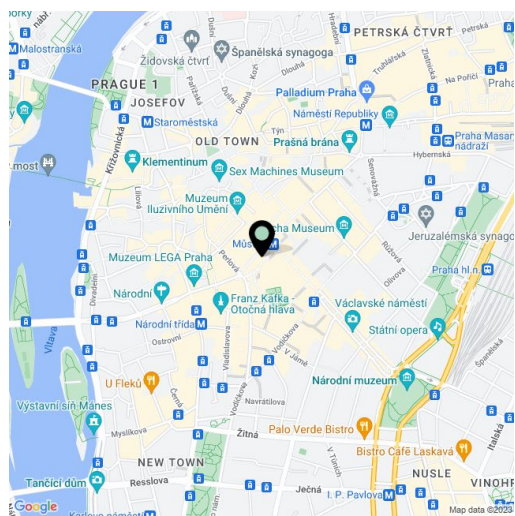
# Apartment Studio (1+kk)

**Sold**40 m<sup>2</sup>, Prague 1, Staré Město, Jungmannovo náměstí

|                  |                   |
|------------------|-------------------|
| Total area       | 40 m <sup>2</sup> |
| Parking          | -                 |
| Cellar           | -                 |
| PENB             | G                 |
| Reference number | 17072             |

This unique studio apartment ready for completion according to requirements of the buyer with views of Jungmannovo náměstí Square and the Church of Our Lady of the Snows is located across the entire width of the 3rd floor of a small apartment building with a lift, close to Wenceslas Square and the entrance to Můstek metro station, line A and B.

The main living room is prepared for a kitchen and bathroom with a toilet. The apartment has a separate storage and utility room in the hallway, just next door. Well maintained house, only two apartments per floor, elevator. Central location, all amenities within walking distance, incl. shops, restaurants and cultural activities. Photos are accompanied by visualizations of possible internal structure. Interior 40 m<sup>2</sup>.

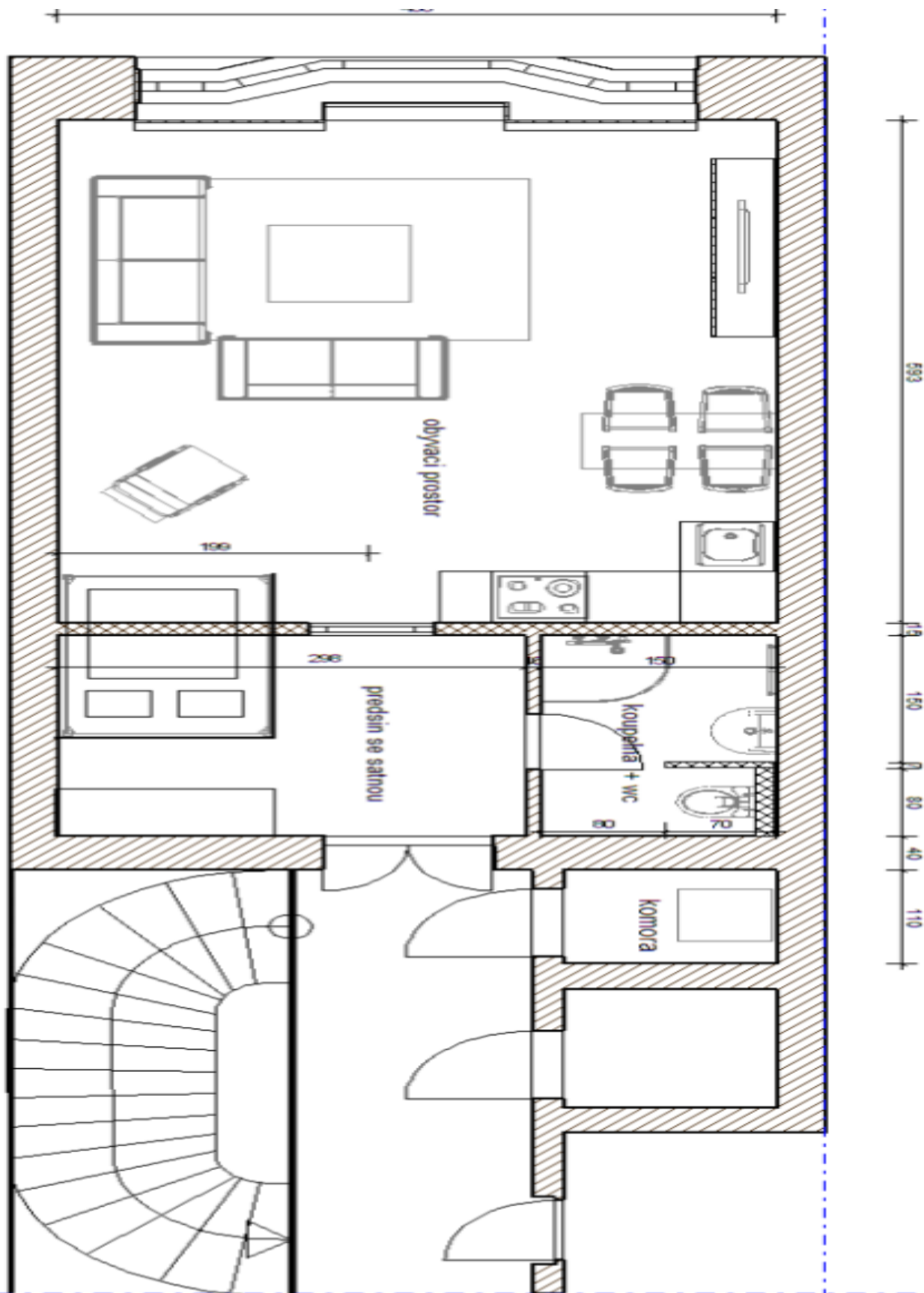


\* Area of the unit according to the Civil Code. The area consists of the sum total area of the entire unit bounded by perimeter walls.

## Apartment Studio (1+kk)

Sold

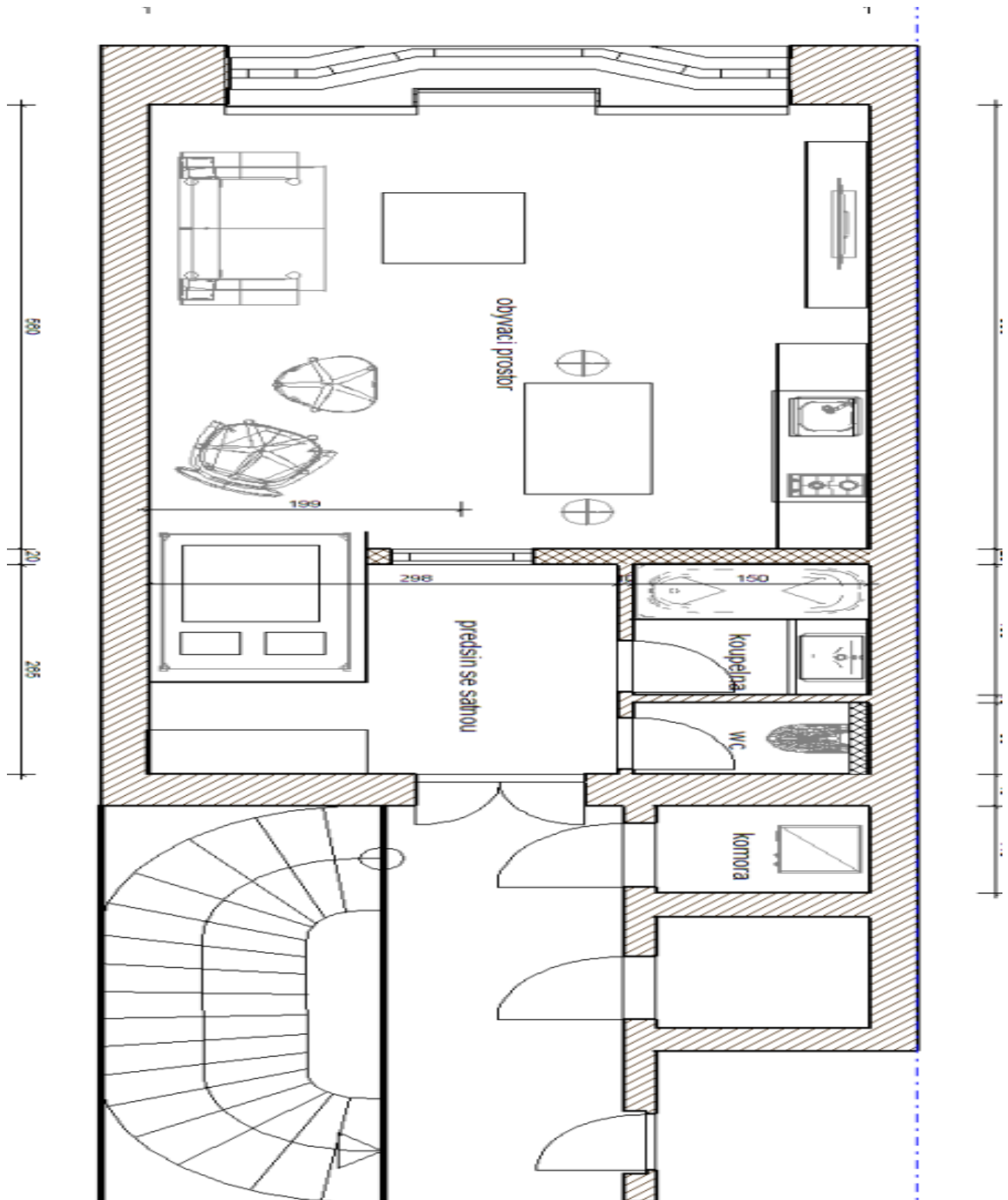
40 m<sup>2</sup>, Prague 1, Staré Město, Jungmannovo náměstí



## Apartment Studio (1+kk)

Sold

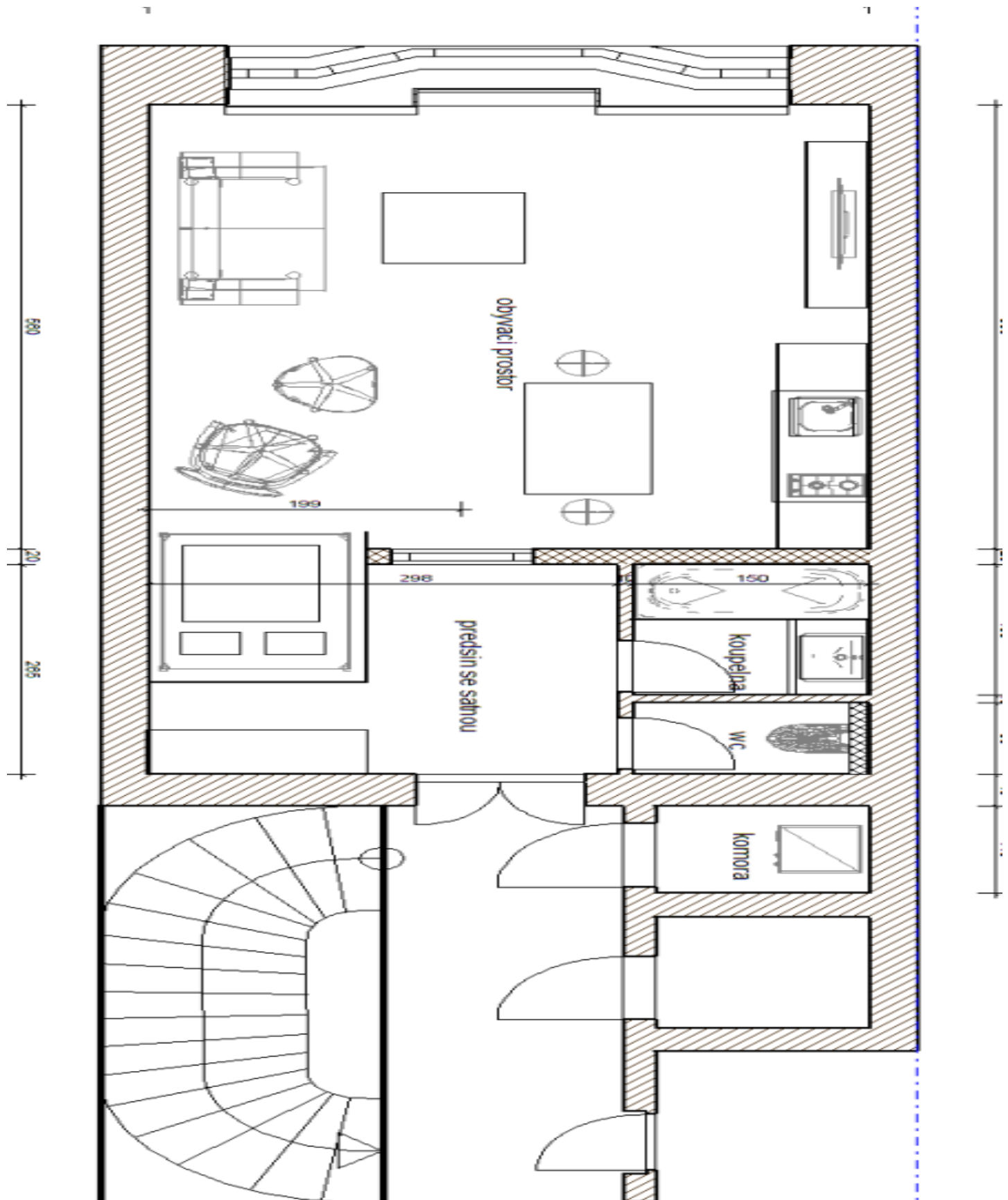
40 m<sup>2</sup>, Prague 1, Staré Město, Jungmannovo náměstí



## Apartment Studio (1+kk)

Sold

40 m<sup>2</sup>, Prague 1, Staré Město, Jungmannovo náměstí



## Apartment Studio (1+kk)

Sold

40 m<sup>2</sup>, Prague 1, Staré Město, Jungmannovo náměstí

