

# Office building

Rented

Prague 6, Ruzyně, Aviatická



## Office building

**Rented**

Prague 6, Ruzyně, Aviatická

Service price	90 CZK monthly per m <sup>2</sup>
Total building area	12 317 m <sup>2</sup>
Tenant consumption	—
Parking	55 EUR
Parking service charges	—
Parking ratio	—
Certification	—
PENB	B
Reference number	17070

The administrative development offers approx. 7.700 sq m of high quality office space and is situated right at the international airport Václav Havel Prague. The retail ground floor includes a Česká pošta (post office), bank and canteen. In close vicinity to restaurants, cafes, a supermarket, shops and hotels. The offices can be modified as individual or open-space concept. All offices are air-conditioned and individually controlled.

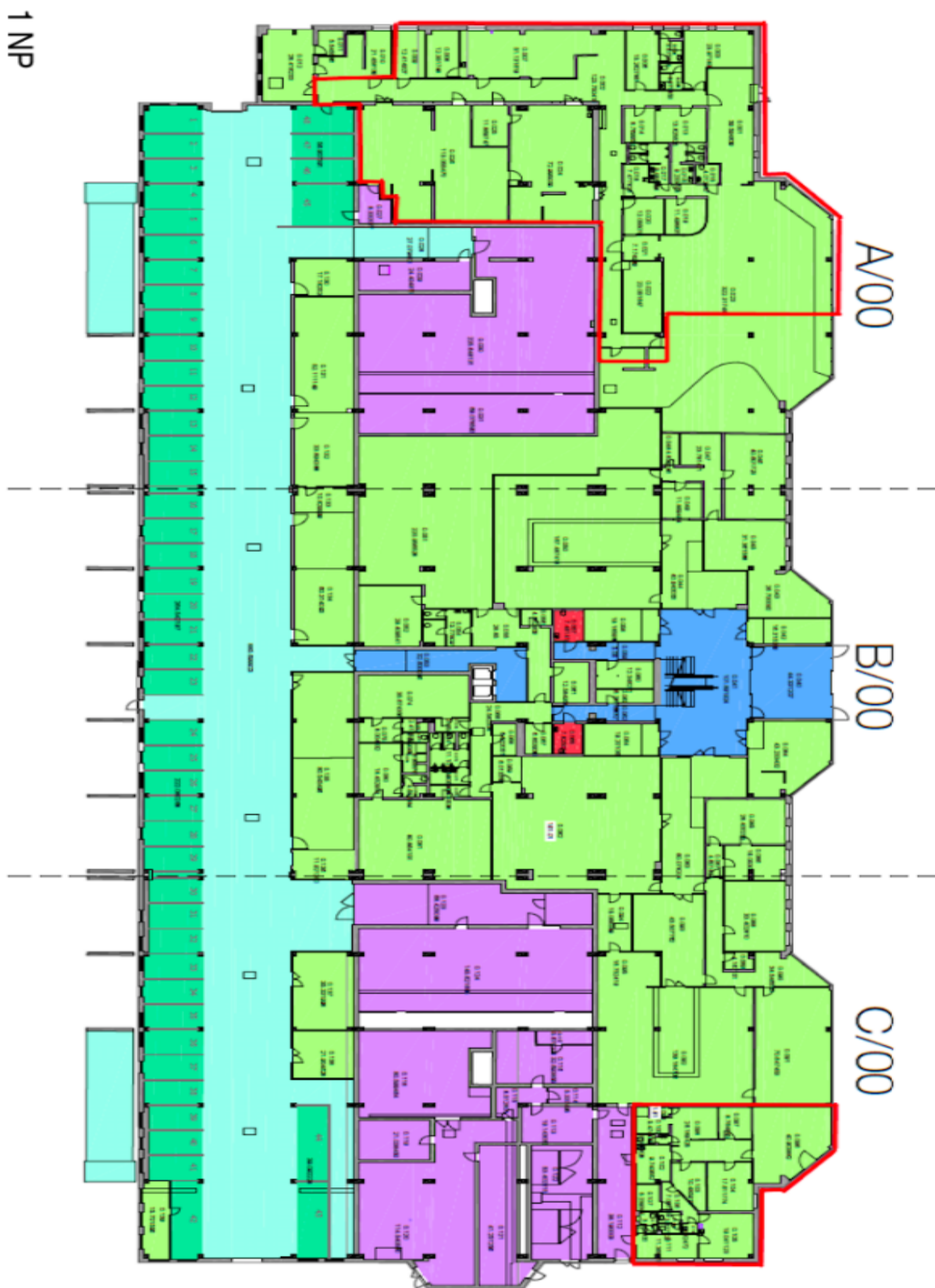
**Location:**

The location provides perfect accessibility to the metro station Dejvická (line A) and the bus stop is right in front of the building.

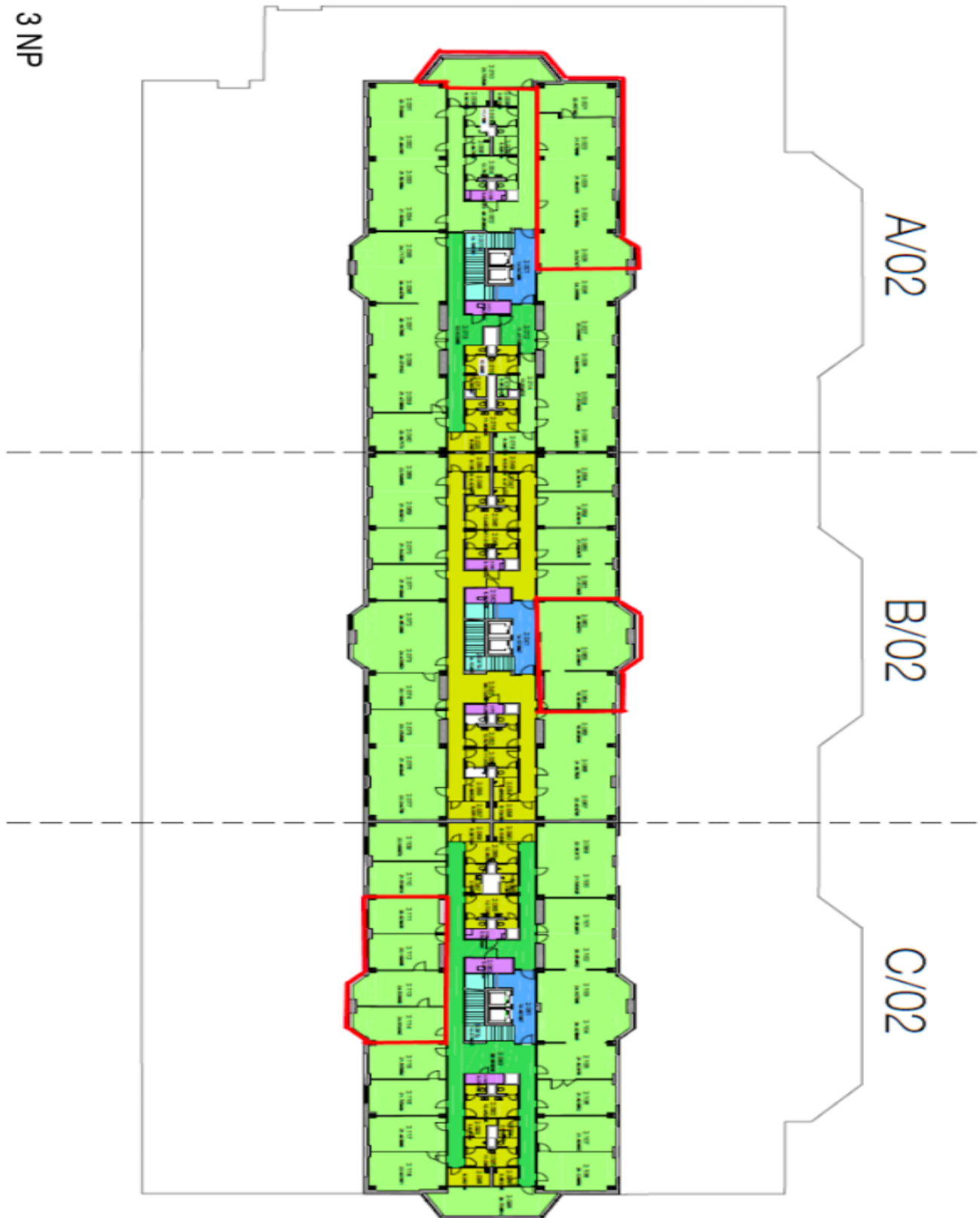
**Features and services:**

Lift  
Central reception  
24/7 access  
Guards  
Air conditioning

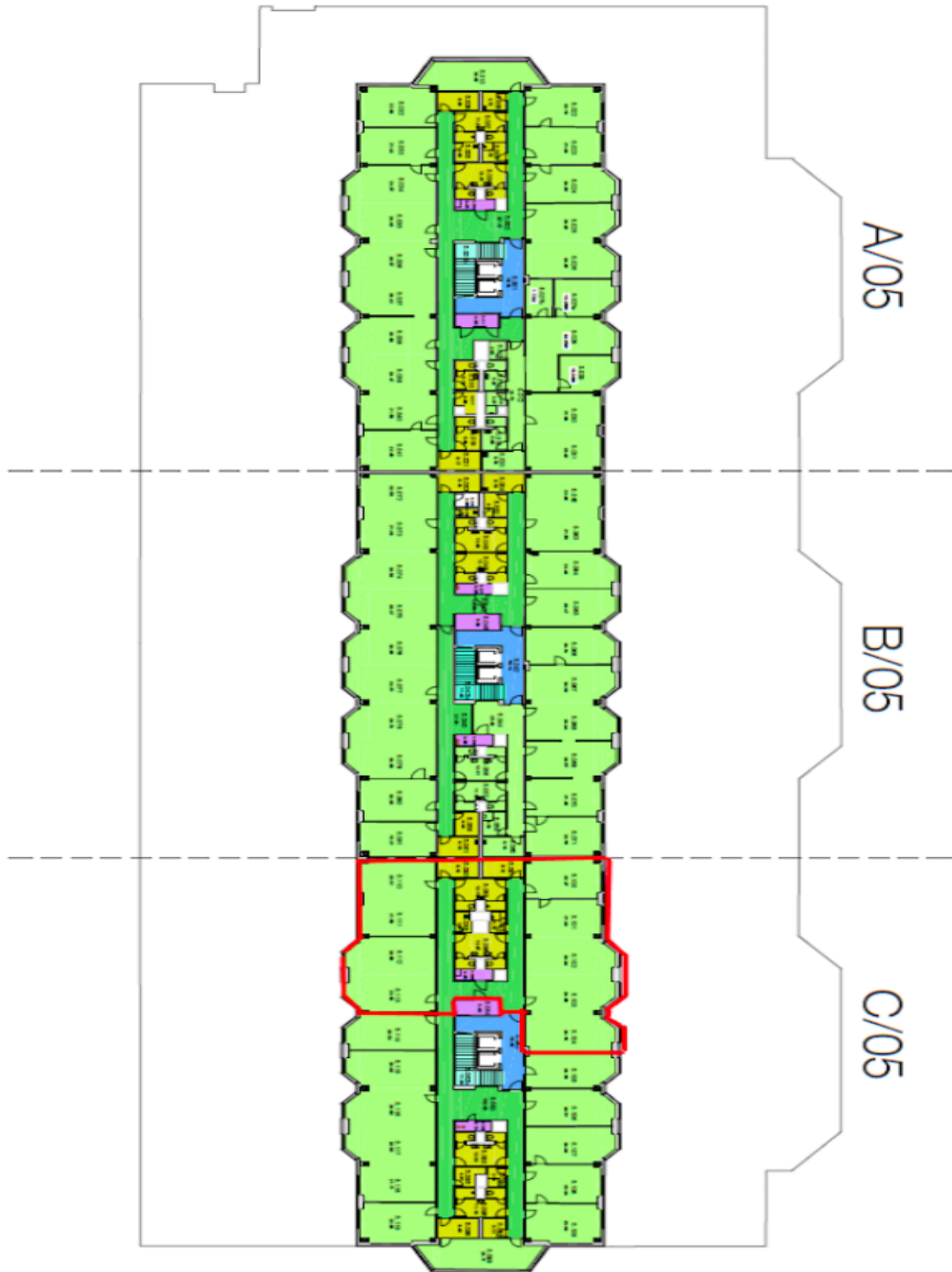
Rental and service charges listed without VAT. Lessee pays no commission.







6 NP



7 NP

