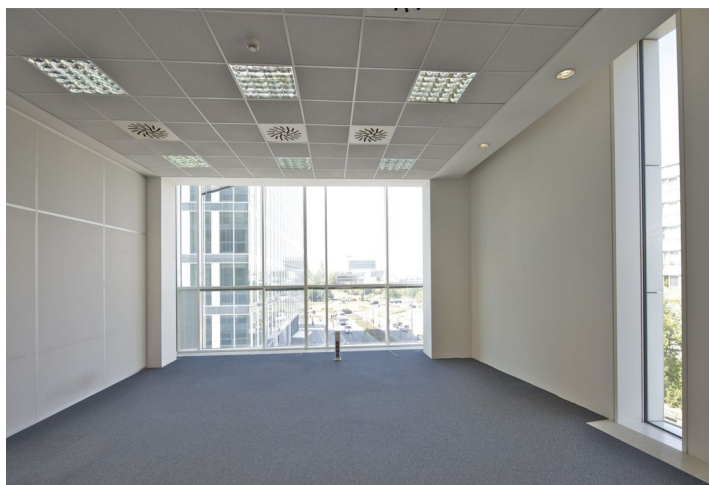
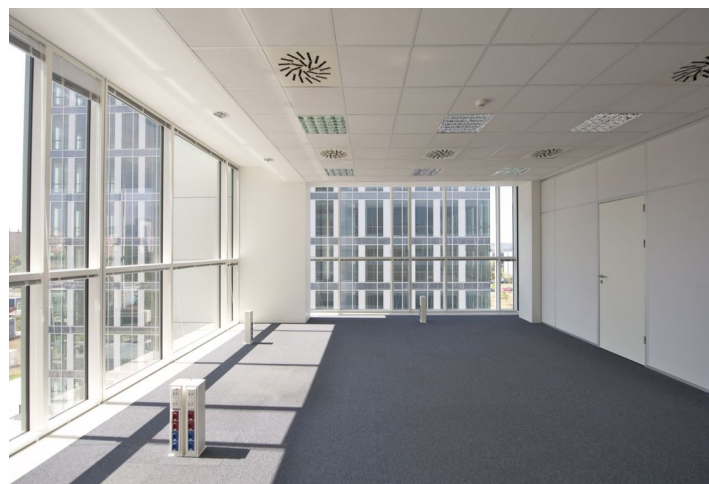


Office space

Rented

Prague 4, Nusle, Hvězdova



Office space

Rented

Prague 4, Nusle, Hvězdova

Service price	170 CZK monthly per m ²
Available area	471 m ²
Cellar	-
Parking	EUR 110 / ps / month
PENB	G
Reference number	16699

Office space for lease on the 1st floor of a modern office building in Prague 4. The offices are equipped with individual control of air-conditioning units and the building has a reception, all-day security, magnetic card access, or equipped kitchens.

Location:

Excellent access by all means of transportation (Pankrác metro station (line C), buses and trams, D1 highway). The area offers a wide range of services including restaurants, cafés, shops, congress centers, hotels, banks, and sports and leisure facilities.

Features and services:

- Air-conditioning
- Double floors
- Lowered ceilings
- Reception
- Security
- Elevators
- Magnetic card access

Rental and service charges listed without VAT. Lessee pays no commission.

