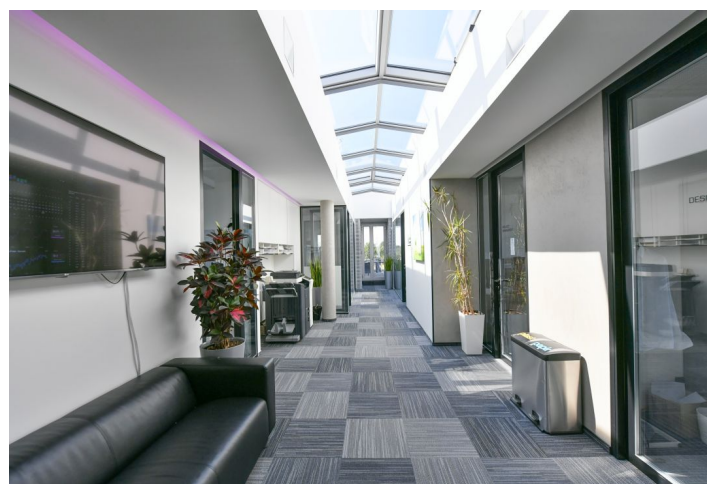


## Office space

Rented

Prague 5, Stodůlky, Šafránkova



## Office space

Rented

Prague 5, Stodůlky, Šafránkova

<b>Service price</b>	165 CZK monthly per m <sup>2</sup>
<b>Available area</b>	266 m <sup>2</sup>
<b>Cellar</b>	-
<b>Parking</b>	EUR 40 / ps / month
<b>PENB</b>	C
<b>Reference number</b>	16641

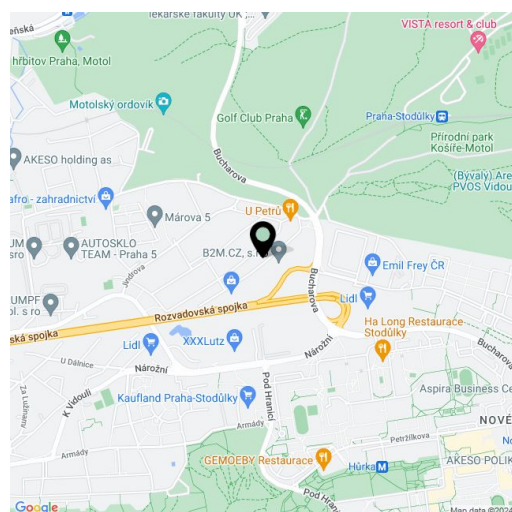
Office space for lease on the 2nd floor in an administrative building in Stodůlky. The building has a central reception, 24-hour security with smart card access, air-conditioned premises and modern elevators. Parking is available directly in front of the building.

**Location:**

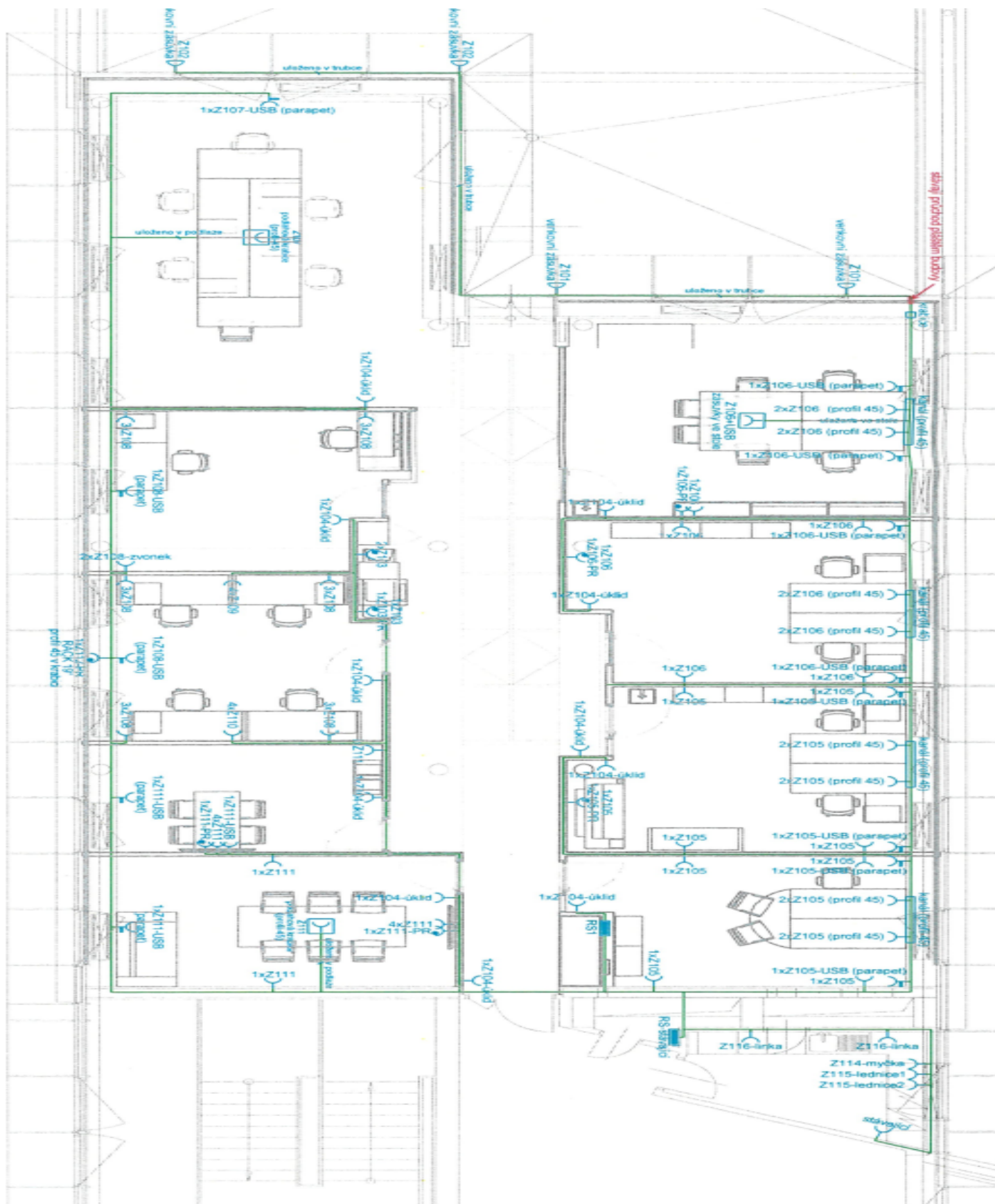
Great transport connections - a bus stop is located right next to the building, the Nové Butovice (line B) and Hůrka (line B) metro stations are only two bus stops away. The location offers easy access to the D5 motorway and excellent infrastructure for shopping centres, services and services.

**Features and Services:**

- Central reception
- Card access control systém
- 24/7 security service
- Modern lifts
- Storage space
- Air-conditioning
- External blinds
- Restaurant
- Parking lots
- Cargo lifts, ramp
- Possibility of storage space, 60 sq. m (7 EUR/sq. m)



Rental and service charges listed without VAT. Lessee pays no commission.



## Office space

Prague 5, Stodůlky, Šafránkova

Rented

