

Office building

Rented

Prague 1, Nové Město, Purkyňova



Office building

Rented

Prague 1, Nové Město, Purkyňova

| | |
|--------------------------------|------------------------------------|
| Service price | 101 CZK monthly per m ² |
| Total building area | 3 755 m ² |
| Tenant consumption | — |
| Parking | 7 500 CZK |
| Parking service charges | — |
| Parking ratio | — |
| Certification | — |
| PENB | G |
| Reference number | 16490 |

Administrative complex on the corner of Spálená and Purkyňova streets, consisting of two buildings connected by an attractive atrium aligned with a shopping arcade and café. The original building is situated next to the Národní třída metro station (line B) and a number of tram stops, with ample public amenities in the immediate proximity.

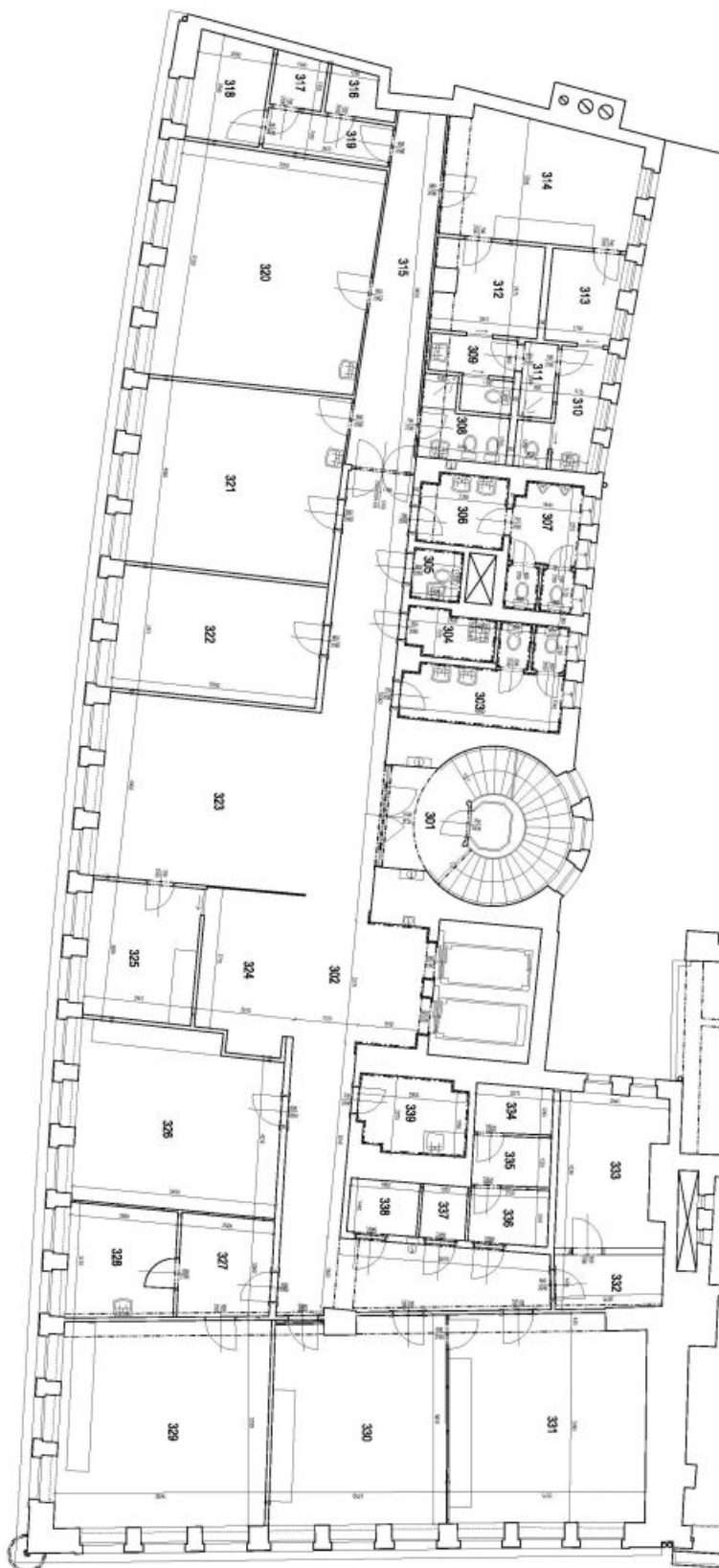
Features include raised floors, carpets, integrated lighting in suspended ceilings, and openable plastic windows. Reception and 24/7 security available.

Rental and service charges listed without VAT. Lessee pays no commission.

Office building

Prague 1, Nové Město, Purkyňova

Rented



Office building

Prague 1, Nové Město, Purkyňova

Rented

