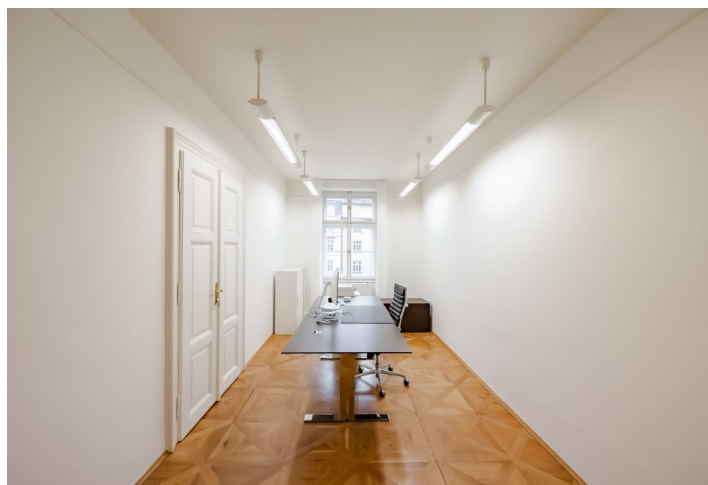


Office building

Rented

Prague 1, Nové Město, Senovážné náměstí



Office building

Rented

Prague 1, Nové Město, Senovážné náměstí

| | |
|-------------------------|------------------------------------|
| Service price | 120 CZK monthly per m ² |
| Total building area | 2 286 m ² |
| Tenant consumption | — |
| Parking | - |
| Parking service charges | — |
| Parking ratio | — |
| Certification | — |
| PENB | G |
| Reference number | 16419 |

Historic Neo-Classicist building located in the city center of Prague, just a few minutes' walk from Wenceslas Square. The building was completely renovated and transformed into an office building.

Location:

The exclusivity of space is enhanced by the attractive location in the financial and commercial center. Outstanding accessibility by car and public transportation - within walking distance of the Můstek (lines A, B), Náměstí Republiky (line B), and Muzeum (line C) metro stations, moments from a tram stop and close to the city highway with direct connection to the D1 highway.

Features and Services:

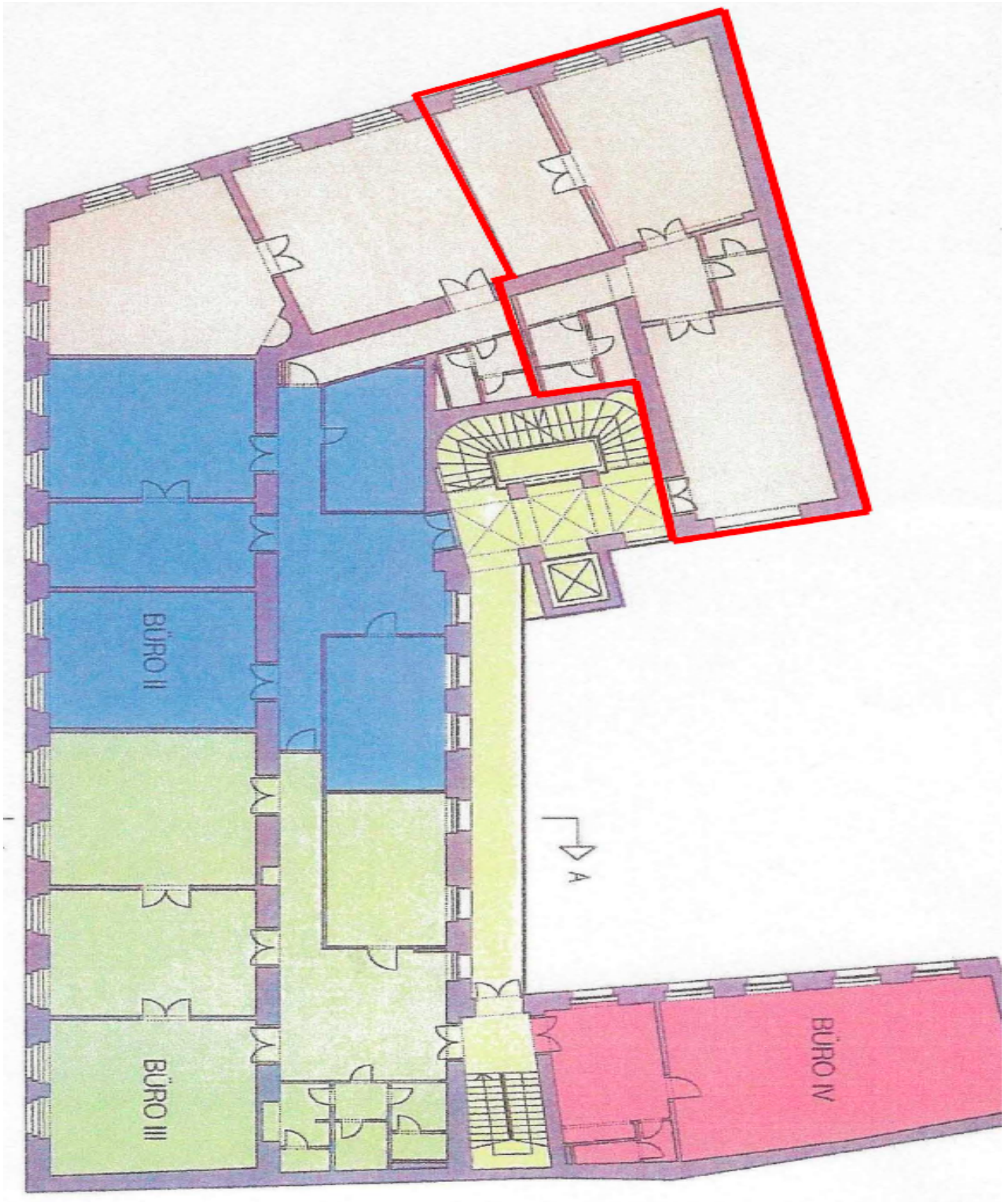
Central reception
24/7 access and security service
Parking available
Large, spacious and light offices with excellent views
Elegant doors, windows and fittings
Hardwood flooring Air-conditioned

Rental and service charges listed without VAT. Lessee pays no commission.

Office building

Rented

Prague 1, Nové Město, Senovážné náměstí



“ex Triga”

