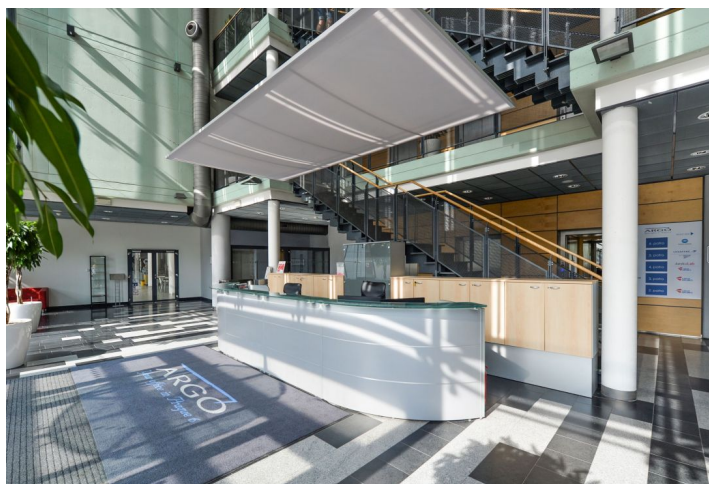
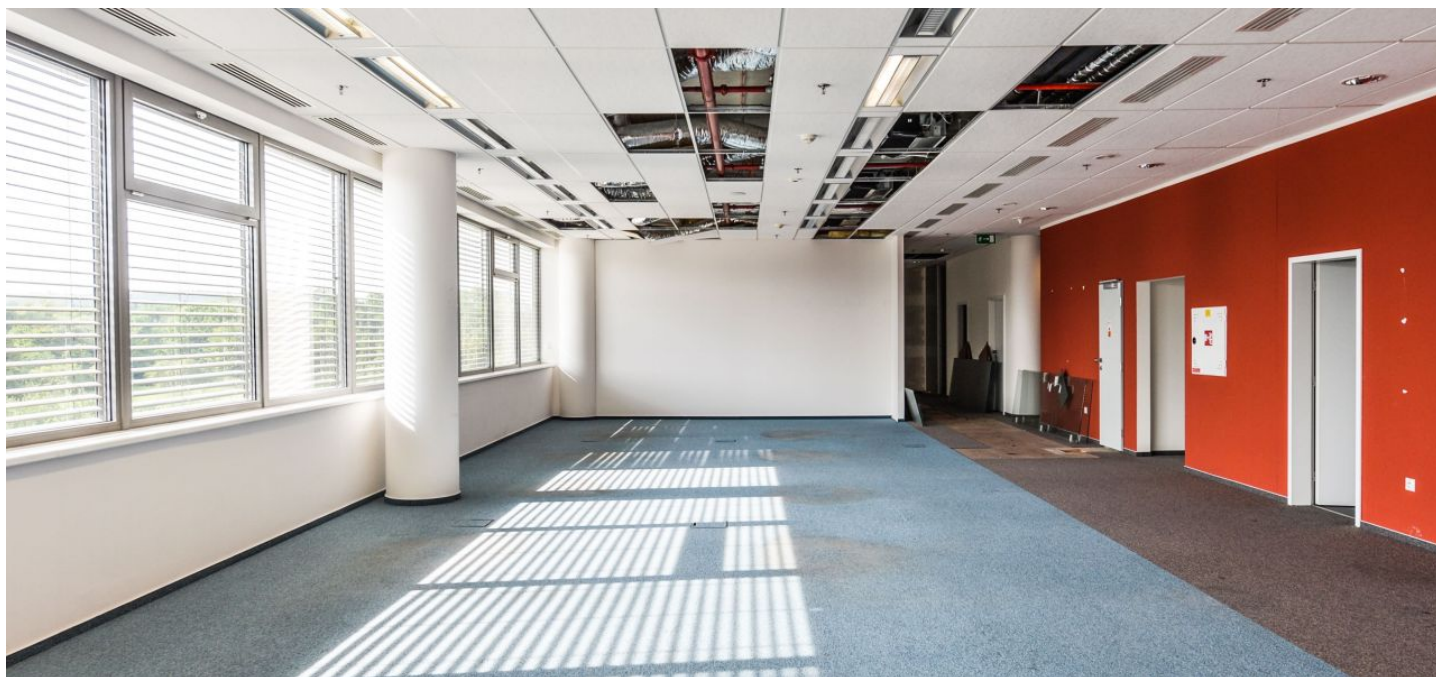


Office space

€ 14.50 / m<sup>2</sup> | CZK 363 / m<sup>2</sup>

Prague 6, Vokovice, Evropská



## Office space

€ 14.50 / m<sup>2</sup> | CZK 363 / m<sup>2</sup>

Prague 6, Vokovice, Evropská

Service price	115 CZK monthly per m <sup>2</sup>
Available area	150 m <sup>2</sup>
Cellar	-
Parking	EUR 80 / ps / month
PENB	G
Reference number	16294

Office space for lease on the 2nd floor of a modern A class office building situated in Prague 6. Building offers a perfect working environment to suit a variety of tenants needs, combining a state-of-the-art technologies with modern functional design for forward thinking companies.

**Location:**

The building is located northwest from the city center with excellent visibility from Evropská Street and great accessibility to the international airport. Both tram and bus stops are located nearby and metro station Nádraží Veleslavín (line A) is a 5-minute walk away. Easy access to the Prague ring road, very well connected to D5 and R7 highways. Nearby are some of the prime residential areas in Prague as well as the protected forests and valleys of Šárka.

**Features and Services:**

- Flexible office space
- Suspended ceilings
- Raised floors
- Sprinklers
- Air conditioning
- Open able windows
- Optical cable
- Central reception
- 3 modern lifts
- 24/7 Security service
- Magnetic card access
- Professional property management on-site
- Canteen on-site
- Underground parking

**Available from September 2025.**

Rental and service charges listed without VAT. Lessee pays no commission.

