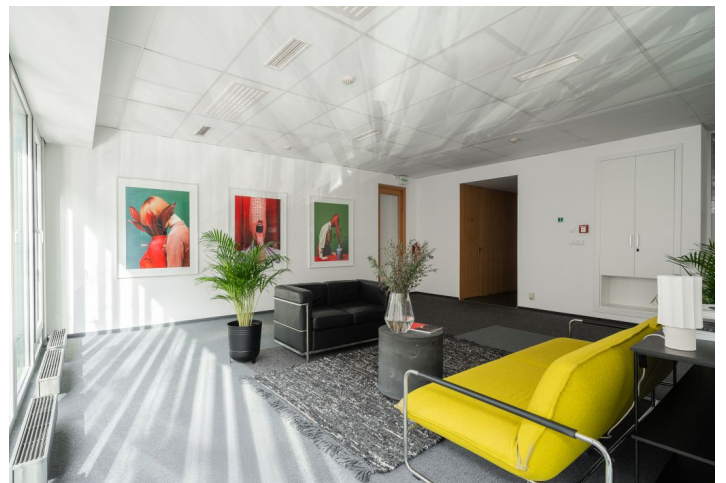
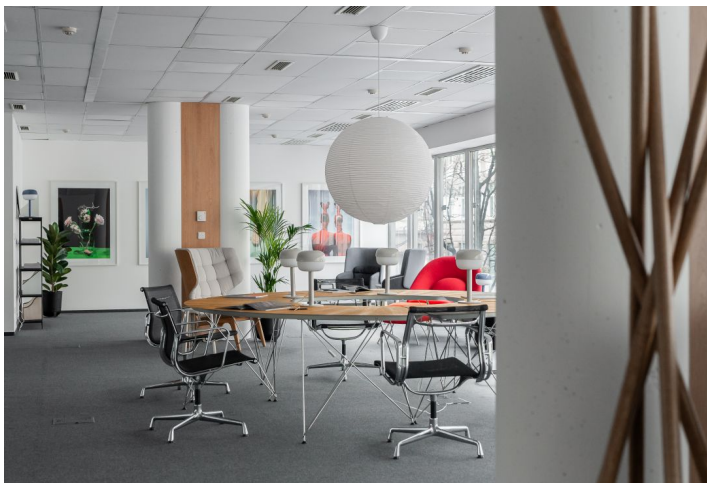
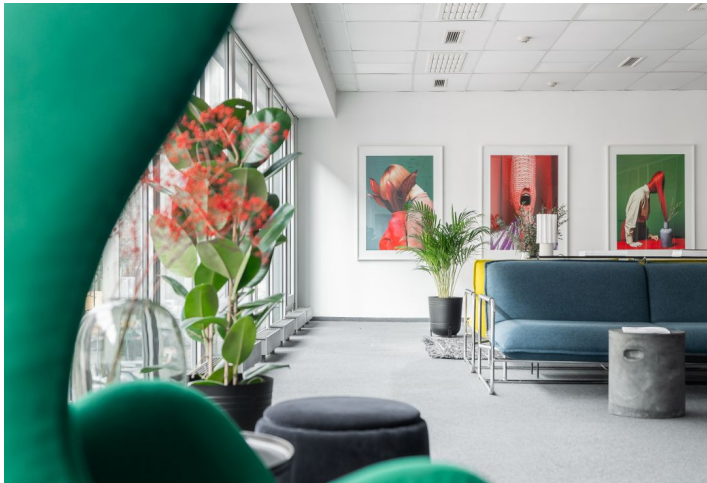


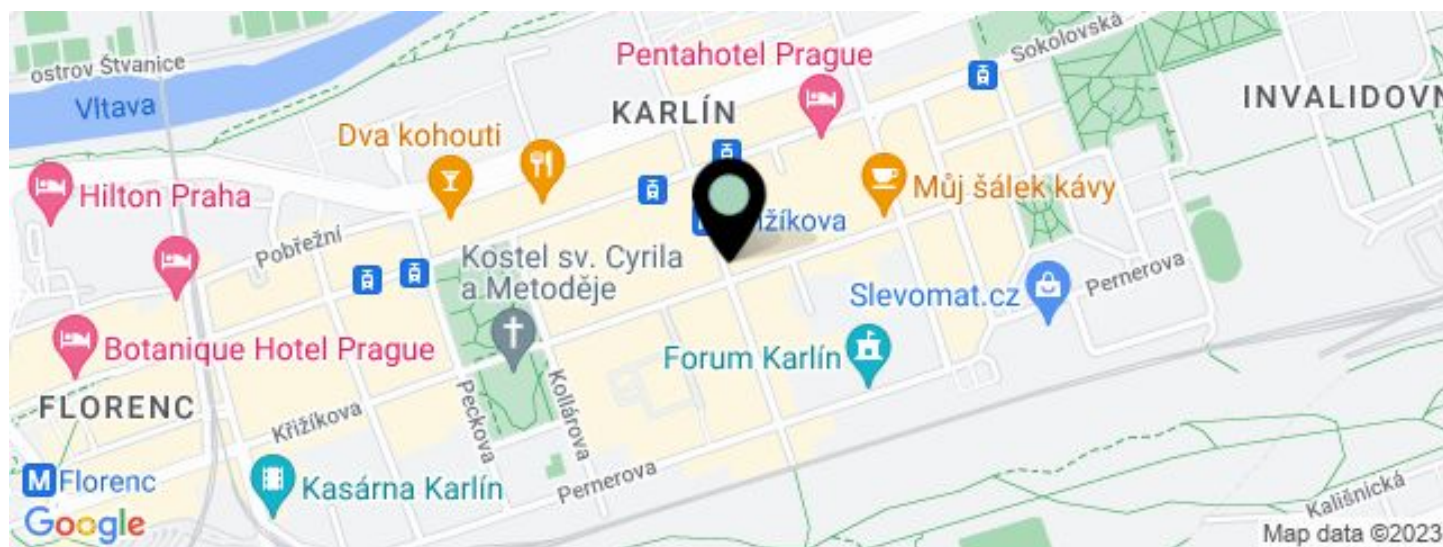
Office building

€ 14.50 / m² | CZK 362 / m²

1323 m², Prague 8, Karlín, Thámova



Office building

€ 14.50 / m² | CZK 362 / m²1 323 m², Prague 8, Karlín, Thámova

| UNIT | AVAILABLE AREA | SERVICES | PARKING | MONTHLY RENT |
|-------------------------|----------------------|---------------------------------------|------------------------------|--------------------------|
| Office space, 3rd floor | 310 m ² | 125 CZK monthly per m ² | from EUR 135 / ps / month | € 14.50 / m ² |
| Office space, 1st floor | 285 m ² | 125 CZK monthly per m ² | from EUR 135 / ps / month | € 14.50 / m ² |
| Office space, 1st floor | 728 m ² | 125 CZK monthly per m ² | from EUR 135 / ps / month | € 14.50 / m ² |
| Office space, 1st floor | 1 012 m ² | 125 CZK monthly per m ² | from EUR 135 / ps / month | € 14.50 / m ² |

Office building

€ 14.50 / m² | CZK 362 / m²1 323 m², Prague 8, Karlín, Thámova

| | |
|-------------------------|----------------------|
| Service price | 125 CZK monthly |
| Total building area | 4 404 m ² |
| Tenant consumption | — |
| Parking | 135 EUR |
| Parking service charges | — |
| Parking ratio | — |
| Certification | — |
| PENB | D |
| Reference number | 16219 |

Modern office building with office space for lease in Prague 8. Karlín is a popular administrative and residential district, which is characterized by a rich cultural life and services - variety of quality restaurants and cafes, shops, as well as medical facilities, banks and the Forum Karlín multifunctional complex.

Direct energy consumption - separate billing according to actual consumption.

Location:

Easy accessibility by public transport and by car. The metro station Křižíkova (line B), the tram stop Křižíkova and Urxova; easy connection to the D8 expressway and the city centre.

Features and Services:

Central reception
24-hour security
Camera system
Lowered ceilings
Air Conditioning
Central heating
Electronic smoke detectors
Separate kitchens and toilets on each floor
Meeting rooms
Parking, parking ratio 1:100

Rental and service charges listed without VAT. Lessee pays no commission.