

Apartment Three-bedroom (4+kk)

Sold

152 m², Prague 6, Bubeneč, Gotthardská



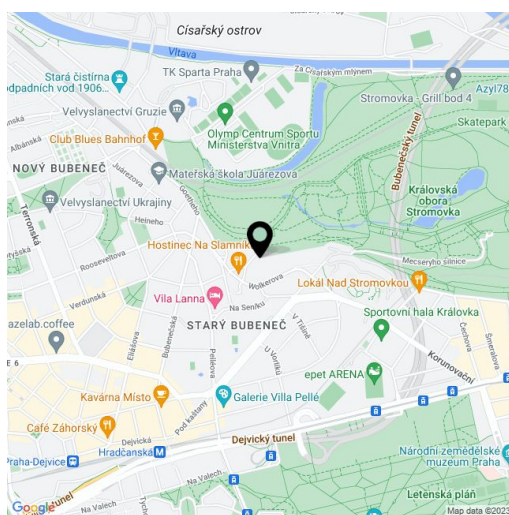
Apartment Three-bedroom (4+kk)

Sold152 m², Prague 6, Bubeneč, Gotthardská

Total area	174 m ²
Floor area*	152 m ²
Terrace	22 m ²
Parking	-
Cellar	-
PENB	G
Reference number	16200

Spacious renovated 3-bedroom apartment on the 2nd floor of a reconstructed building with a lift and large garden. Located in the prestigious embassy district right next to the largest park in Prague, Stromovka, a minute walk to a bus stop, and only a 10 minute walk to Hradčanská metro station.

The interior features a spacious living room with access to the terrace, a central hall, fully fitted kitchen with dining area, study with access to the terrace that faces a private courtyard, 2 bedrooms - master bedroom with walk-in closet, bathroom (bath tub, shower, sink, toilet), chamber, guest toilet, boiler room/walk-in closet, and entry hall. Oriented to the East and West. Parking on the street or possibility to rent a garage space at the next door building (Dutch Embassy). Interior 152.2 m², balconies 9.2 m², terrace 12.4 m².

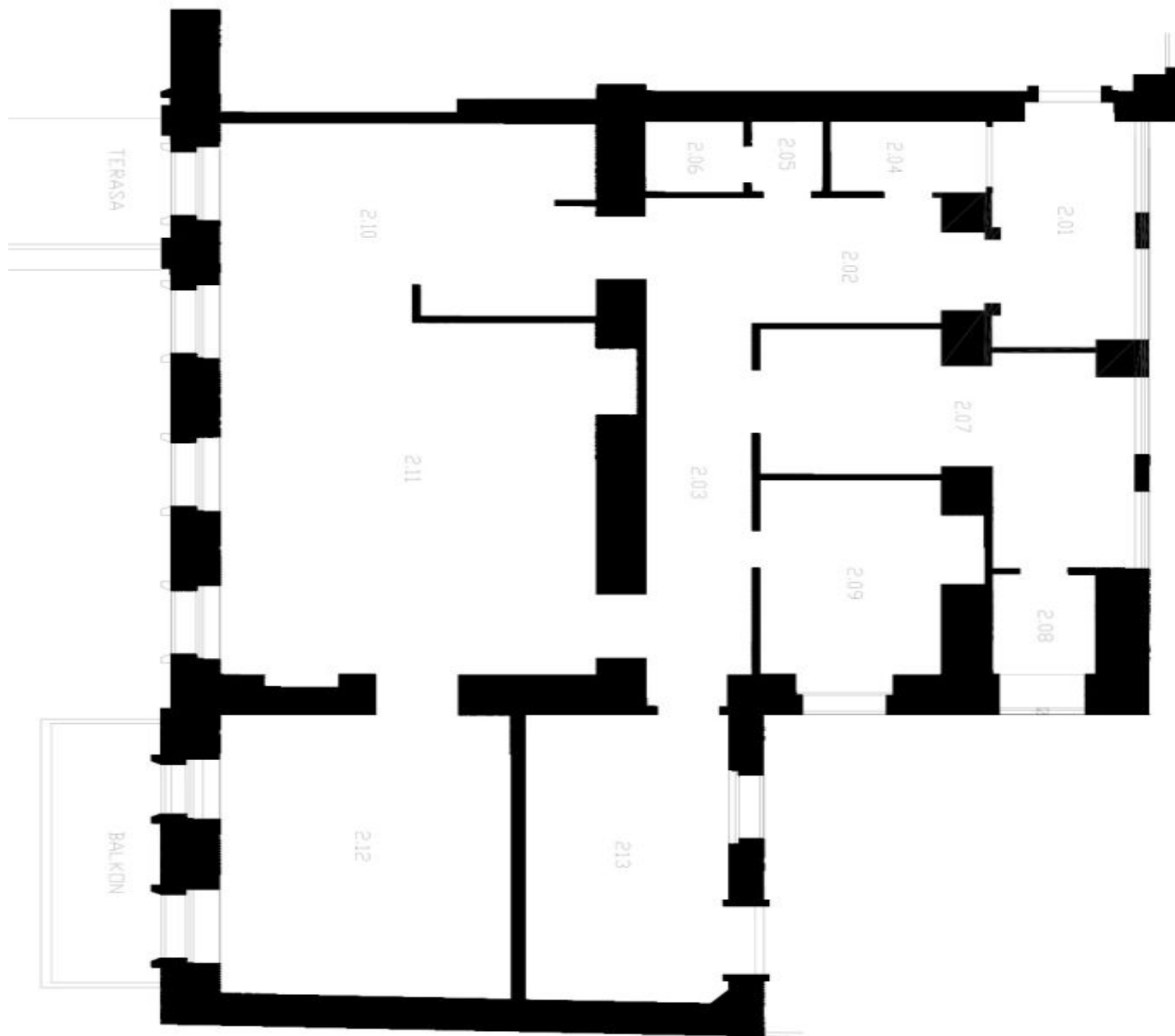


* Area of the unit according to the Civil Code. The area consists of the sum total area of the entire unit bounded by perimeter walls.

Apartment Three-bedroom (4+kk)

Sold

152 m², Prague 6, Bubeneč, Gotthardská



Apartment Three-bedroom (4+kk)

Sold

152 m², Prague 6, Bubeneč, Gotthardská

2.01	PŘEDSÍŇ	6,6 M2	DŘEVĚNÁ PLOVOUCÍ	
2.02	HALA	10 M2	DŘEVĚNÁ PLOVOUCÍ	
2.03	CHODBA	7,2 M2	DŘEVĚNÁ PLOVOUCÍ	
2.04	ŠATNA	2,8 M2	KERAMICKÁ DLAŽBA	
2.05	WC PŘEDSÍŇ	1,5 M2	KERAMICKÁ DLAŽBA	UMVADLO, BATERIE DTTO
2.06	WC	1,7 M2	KERAMICKÁ DLAŽBA	WC MÍSA GEBERIT
2.07	PRACOVNA	16 M2	DŘEVĚNÁ PLOVOUCÍ	
2.08	DOMÁCÍ PRÁCE	2,1 M2	DŘEVĚNÁ PLOVOUCÍ	
2.09	KOUPELNA	10,4 M2	KERAMICKÁ DLAŽBA	WC MÍSA GEBERIT, 2X UMN., 2X BAT. DTTO, VANA, BAT. DTTO BIDET, BAT. BIDET., SVĚT. RAMPA. SPRCHKOUT, BAT. DTTO
2.10	KUCHYŇ	20,4 M2	DŘEVĚNÁ PLOVOUCÍ	KUCHYŇSKÁ LINKA, DŘEZ S BATERIÍ, SPORÁK, LEDNICE KOTEL PLYNOVÝ KOMBINOVANÝ
2.11	OBÝVACÍ POKOJ	35,5 M2	DŘEVĚNÁ PLOVOUCÍ	
2.12	LOŽNICE	22 M2	DŘEVĚNÁ PLOVOUCÍ	
2.13	LOŽNICE	16 M2	DŘEVĚNÁ PLOVOUCÍ	
	CELKEM BYT	152,2 M2		
	TERASA DO ZAHRADY	12,4 M2		
	TERASA DO ULICE	5,4 M2		
	BALKON	3,8 M2		