

House Four-bedroom (5+kk)

Sold

213 m², Prague 4, Kunratice, Lišovická



House Four-bedroom (5+kk)

Sold213 m², Prague 4, Kunratice, Lišovická

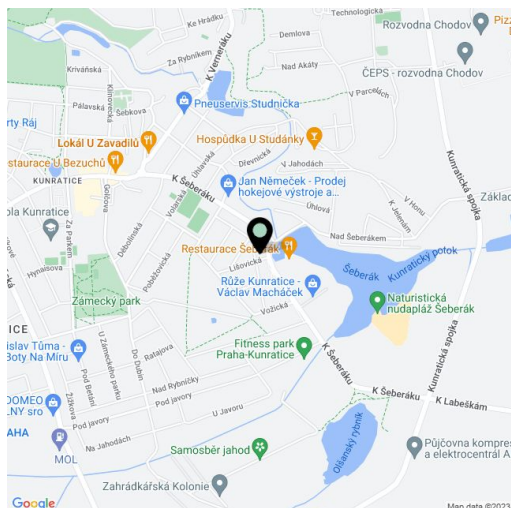
Total area	213 m ²
Plot	441 m ²
Foot print	115 m ²
Garden	326 m ²
Floor area	187 m ²
Terrace	26 m ²
Parking	Garage with remote control.
Garage	Yes
Cellar	-
PENB	G
Reference number	16110

Modern newly built semidetached villa situated in a residential area of Kunratice, surrounded by greenery and just a few steps from the forest.

The ground floor offers a living room with large French doors providing access to a terrace and a garden, a fully-fitted kitchen corner with pantry, a separate WC and a walk-in closet/utility room with a gas heater. The first floor features 4 bedrooms, 2 bathrooms with a bathtub, shower and toilet, and a big closet separated by sliding doors. The master bedroom has an ensuite bathroom; the fourth bedroom can be used as a study. The house features modern quality equipment - solid hardwood floors, alarm, electric blinds in the living room, insect screens, security door, intercom, **a garage for 1 car with a remote controlled door** and another parking spot in front of the house.

One minute walk to a bus stop and 5 minutes drive to the Chodov shopping center. Kindergarten, school, tennis and squash centers, public swimming pool, shops, restaurants and more in the near vicinity.

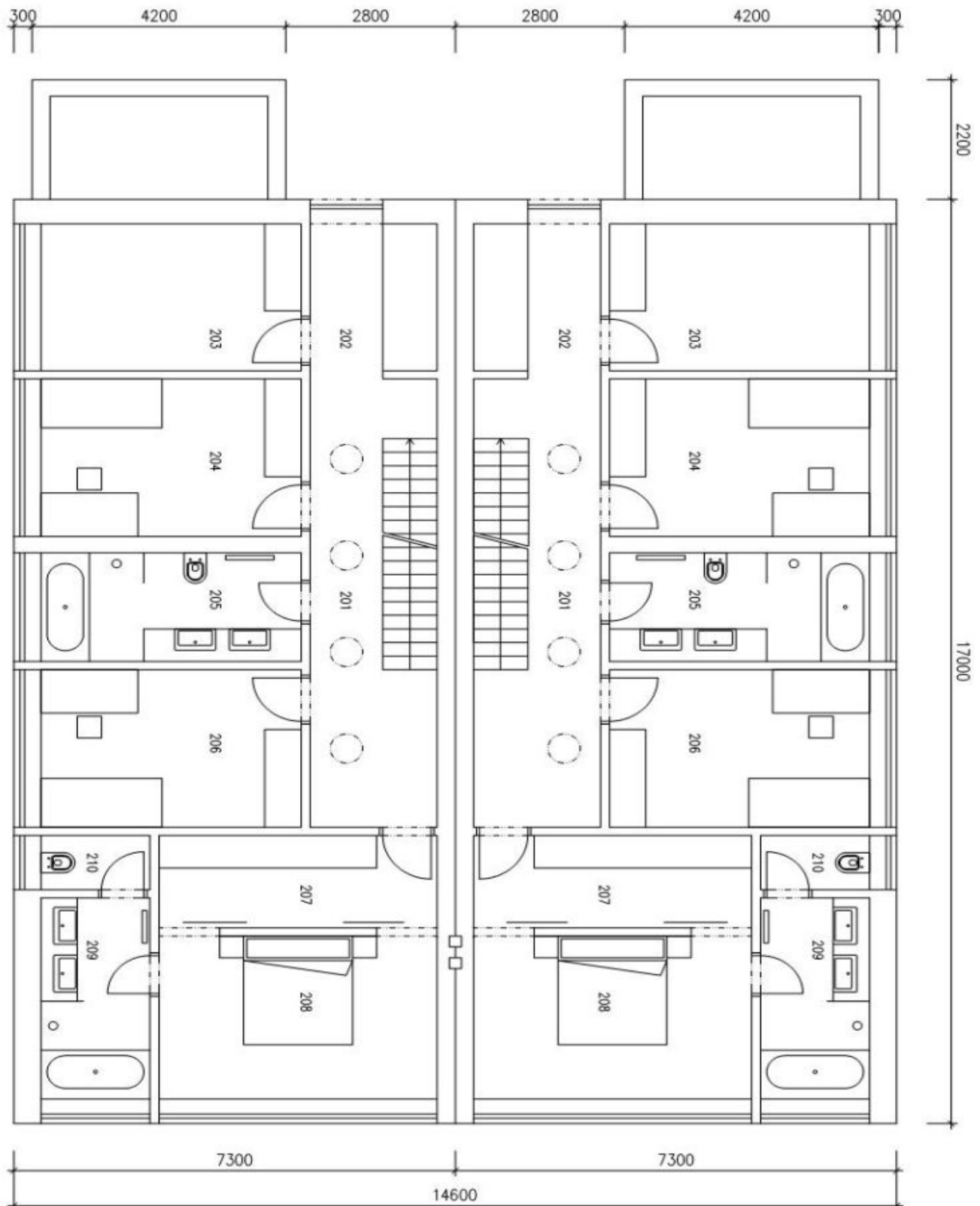
Interior 187 m², terrace 26 m², garden 300 m², plot 441 m².



House Four-bedroom (5+kk)

213 m², Prague 4, Kunratice, Lišovická

Sold



House Four-bedroom (5+kk)

Sold

213 m², Prague 4, Kunratice, Lišovická

