

## House Eleven-bedroom (12+1)

Sold

501 m<sup>2</sup>, Prague 6, Střešovice, U Laboratoře



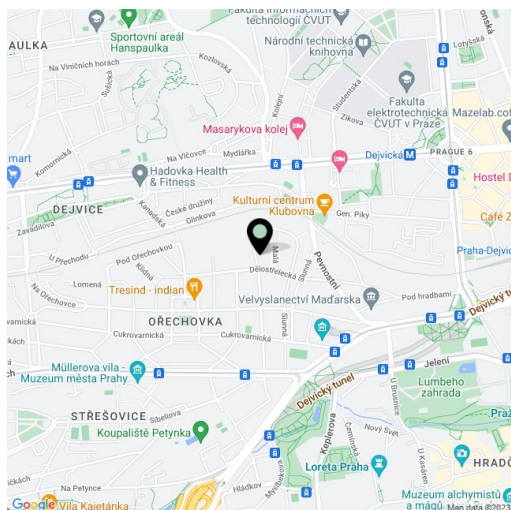
# House Eleven-bedroom (12+1)

**Sold**501 m<sup>2</sup>, Prague 6, Střešovice, U Laboratoře

Total area	501 m <sup>2</sup>
Plot	1 256 m <sup>2</sup>
Foot print	416 m <sup>2</sup>
Garden	840 m <sup>2</sup>
Floor area	489 m <sup>2</sup>
Terrace	12 m <sup>2</sup>
Parking	-
Cellar	Yes
PENB	G
Reference number	16000

**Exceptional 1930s villa, after complete reconstruction with mature landscaped garden, located in the prestigious residential neighborhood of Prague 6 - Ořechovka.**

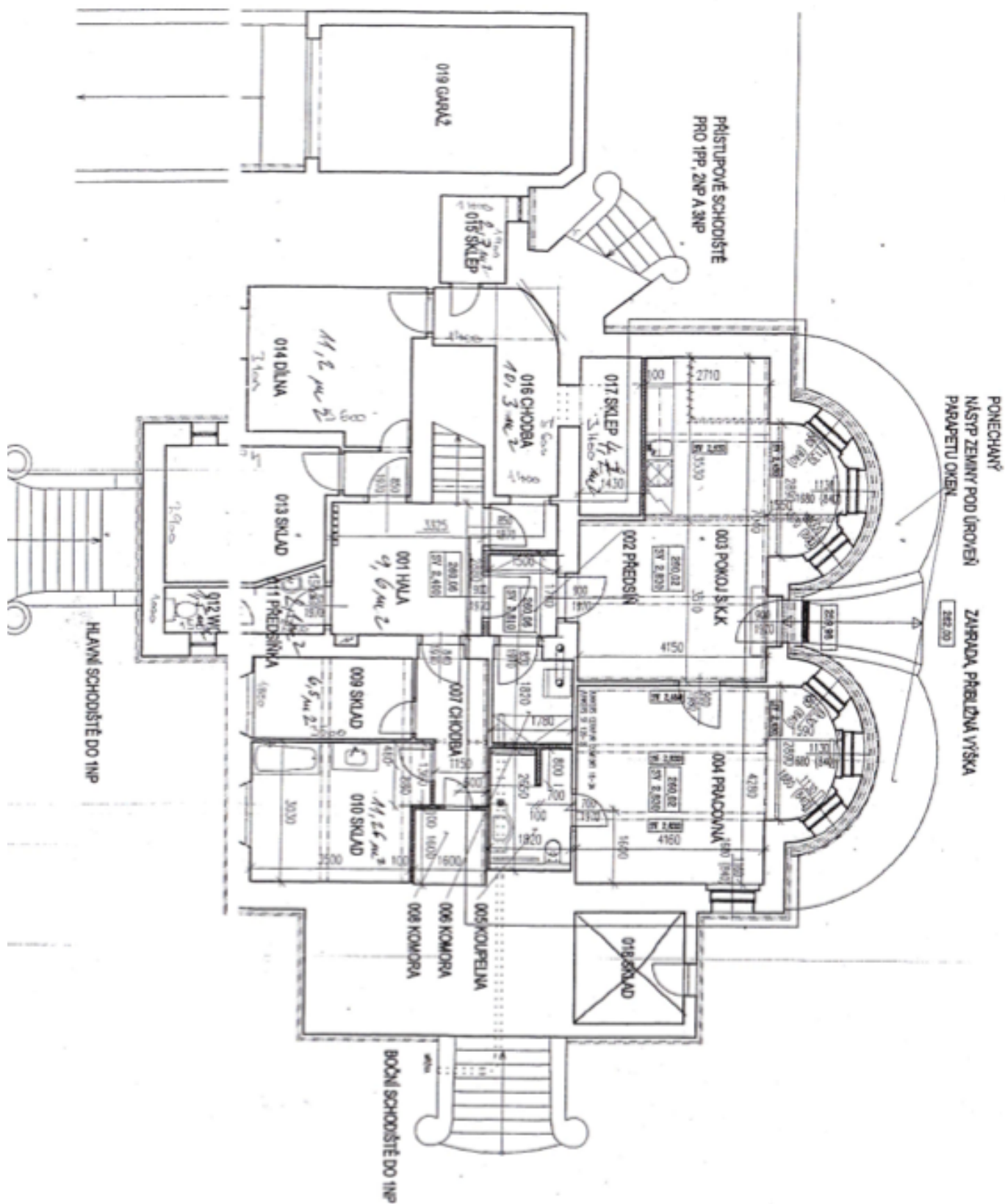
High standard materials and modern equipment are combined with original interior features: bright rooms, wooden floors, parquets, glass railings, modern and original lighting. Ground floor: Entry hall, 3 main rooms, kitchen with pantry, terrace, winter garden, bathroom, 2 WCs. 1st and 2nd floor can be used as separate 2-bedrooms apartments/units. The basement contains the technical rooms for the house, and a one-bedroom unit. Basement area is 61m<sup>2</sup>, Ground floor area is 146 m<sup>2</sup>, 1st floor is 134 m<sup>2</sup>, 2nd floor totals 148 m<sup>2</sup>, with a total foot print of 416 m<sup>2</sup>, and a garden area of 840 m<sup>2</sup>. Double car garage.



# House Eleven-bedroom (12+1)

Sold

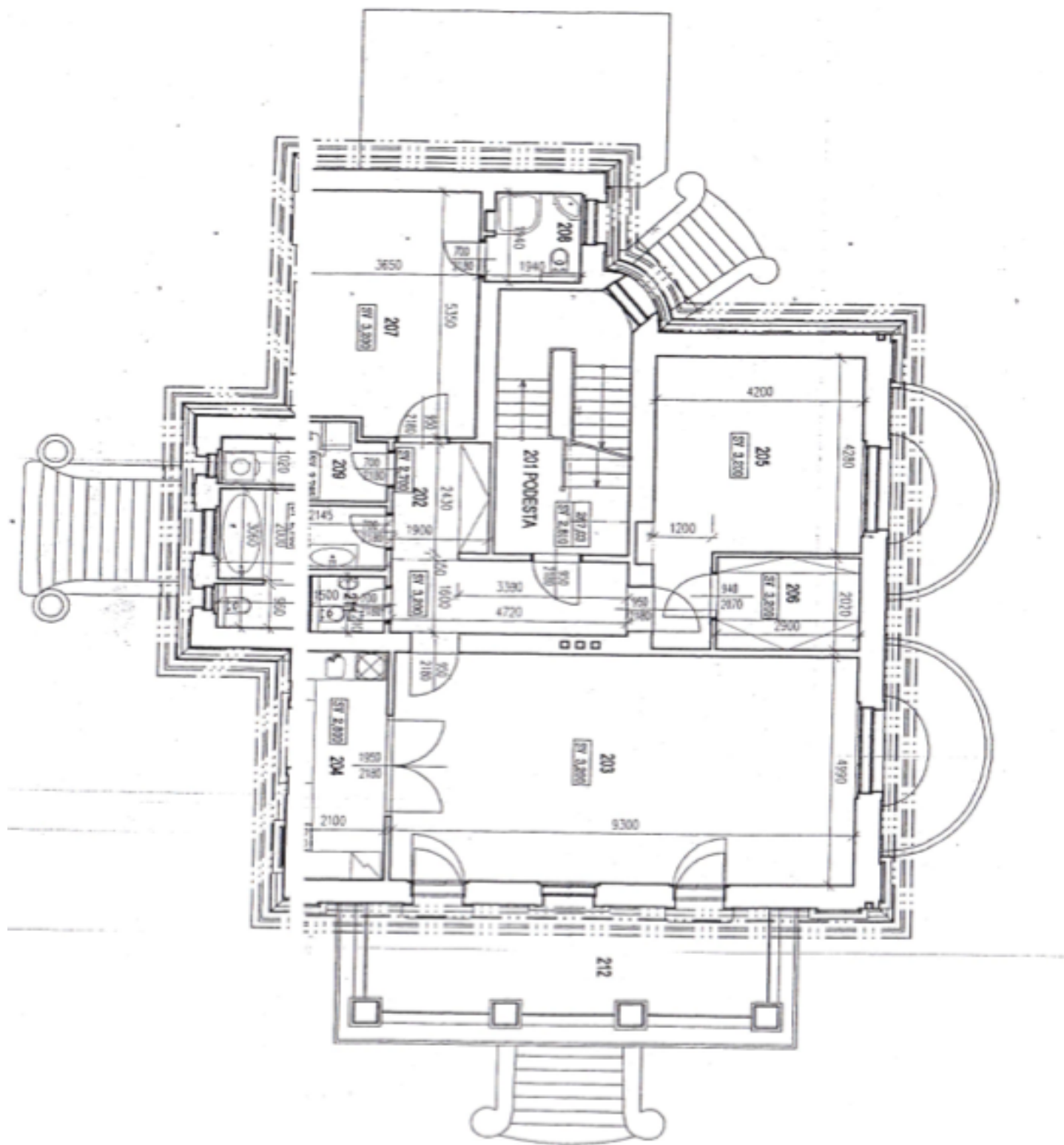
501 m<sup>2</sup>, Prague 6, Střešovice, U Laboratoře



# House Eleven-bedroom (12+1)

Sold

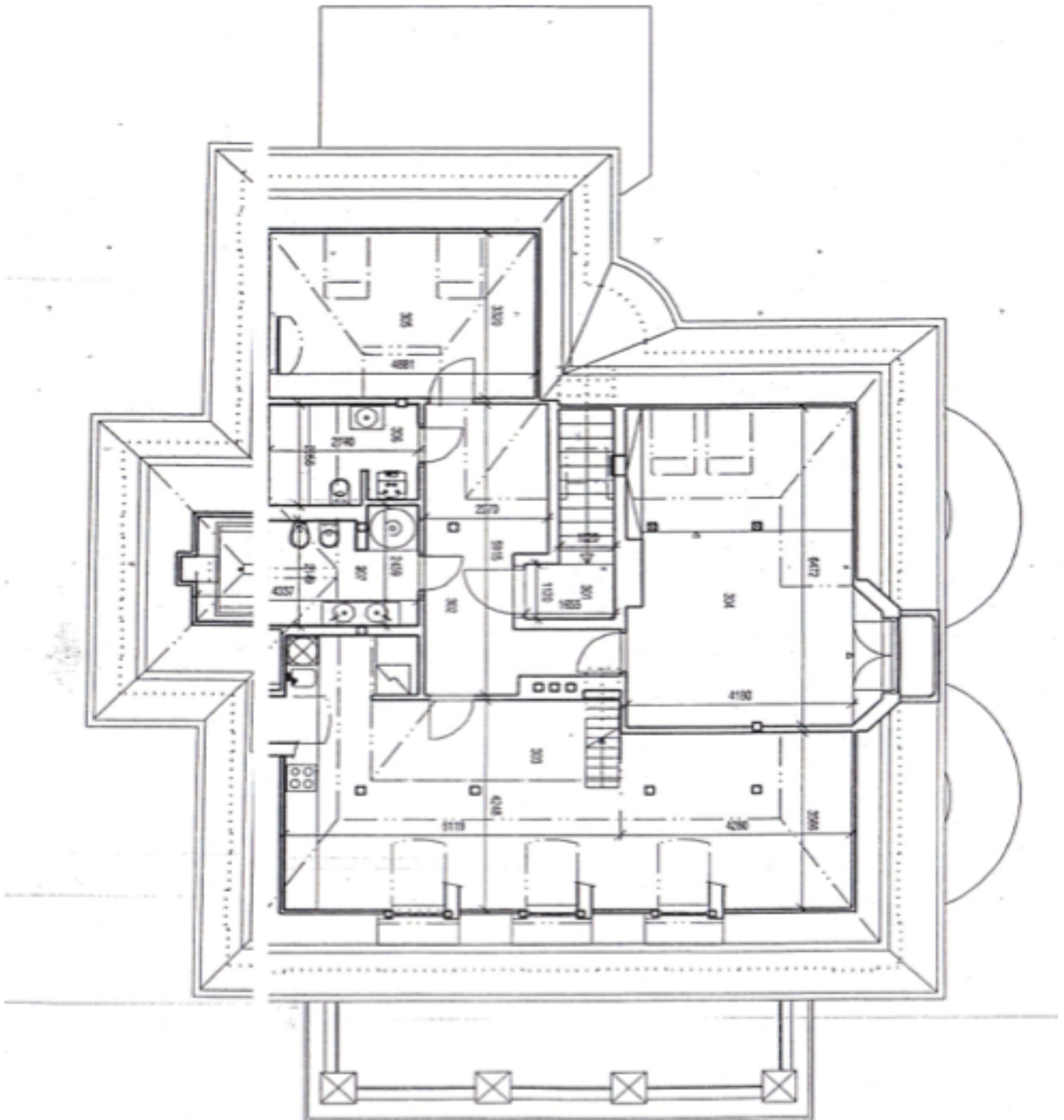
501 m<sup>2</sup>, Prague 6, Střešovice, U Laboratoře



## House Eleven-bedroom (12+1)

Sold

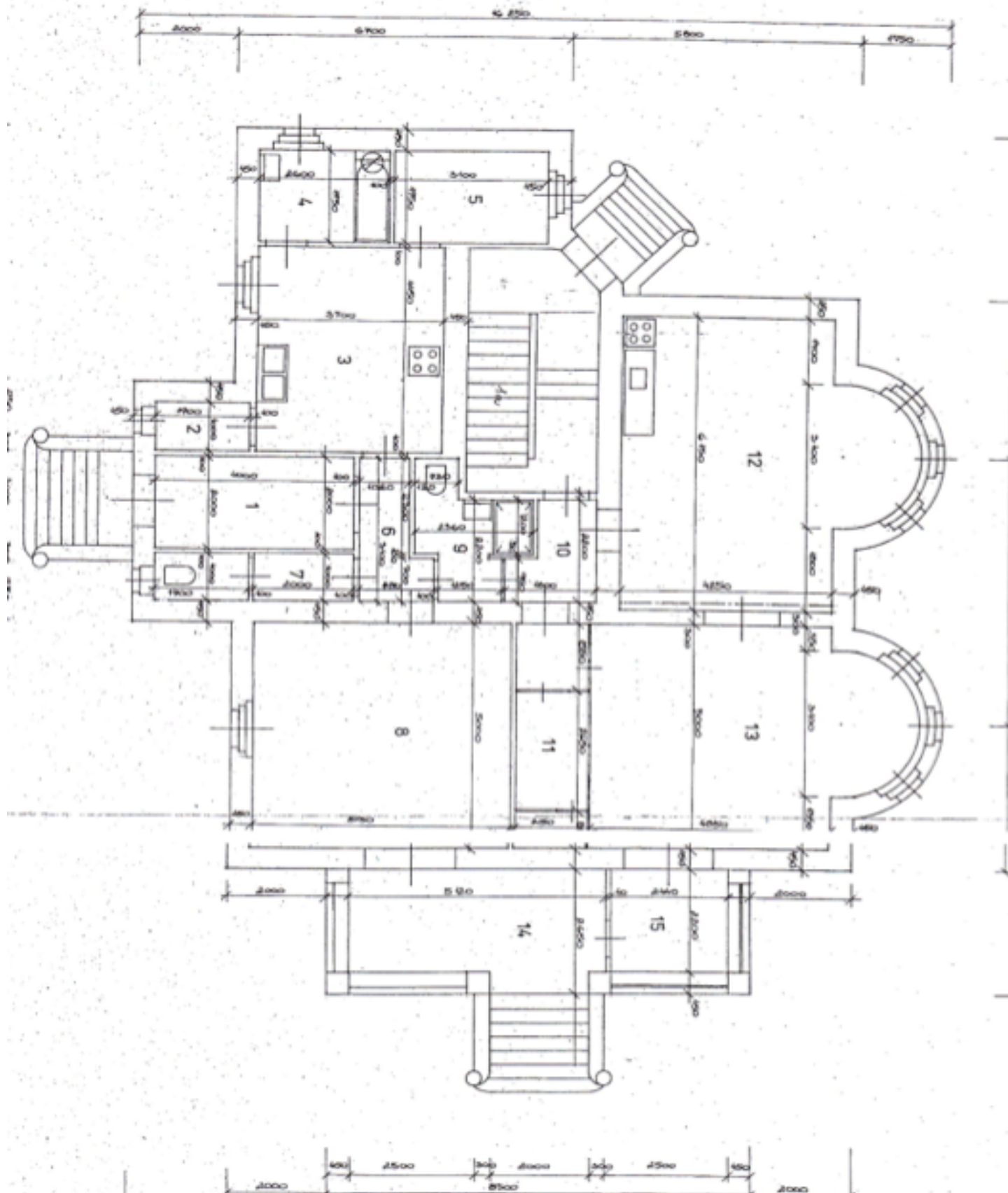
501 m<sup>2</sup>, Prague 6, Střešovice, U Laboratoře



# House Eleven-bedroom (12+1)

Sold

501 m<sup>2</sup>, Prague 6, Střešovice, U Laboratoře



## House Eleven-bedroom (12+1)

Sold

501 m<sup>2</sup>, Prague 6, Střešovice, U Laboratoře

