

Apartment Three-bedroom (4+1)

Rented

131 m², Prague 6, Liboc, Naardenská



Apartment Three-bedroom (4+1)

Rented

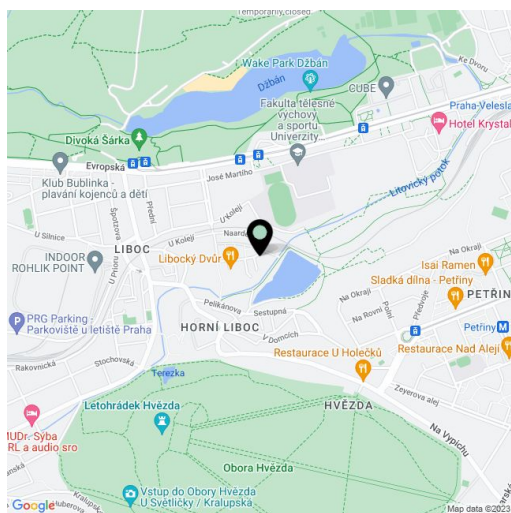
131 m², Prague 6, Liboc, Naardenská

Total area	131 m ²
Parking	On site heated garage parking space included in the rent (second space can be arranged).
Cellar	-
Service price	6980 CZK Monthly
PENB	G
Reference number	15835
Available from	Immediately

Modern furnished 3-bedroom 2-bathroom flat with two terraces offering green views of Hvězda Castle situated on the 2nd floor of a residential complex with lift and security service. Close to an open air pool, playgrounds, and Japanese and English school. Ten minutes by tram or bus to Dejvická metro station.

The flat comprises living room, fully equipped with Siemens appliances open kitchen with breakfast bar, bathrooms (bath tub, bidet, toilet; shower), an additional toilet, and utility room. Terrace access from living room and one bedroom.

Wooden floors and interior doors, washing machine, gas heating, TV and telephone points in all rooms, satellite TV connection, alarm that can be connected to the security in the complex. Common building charges CZK 7,000/month. Energies are billed separately.

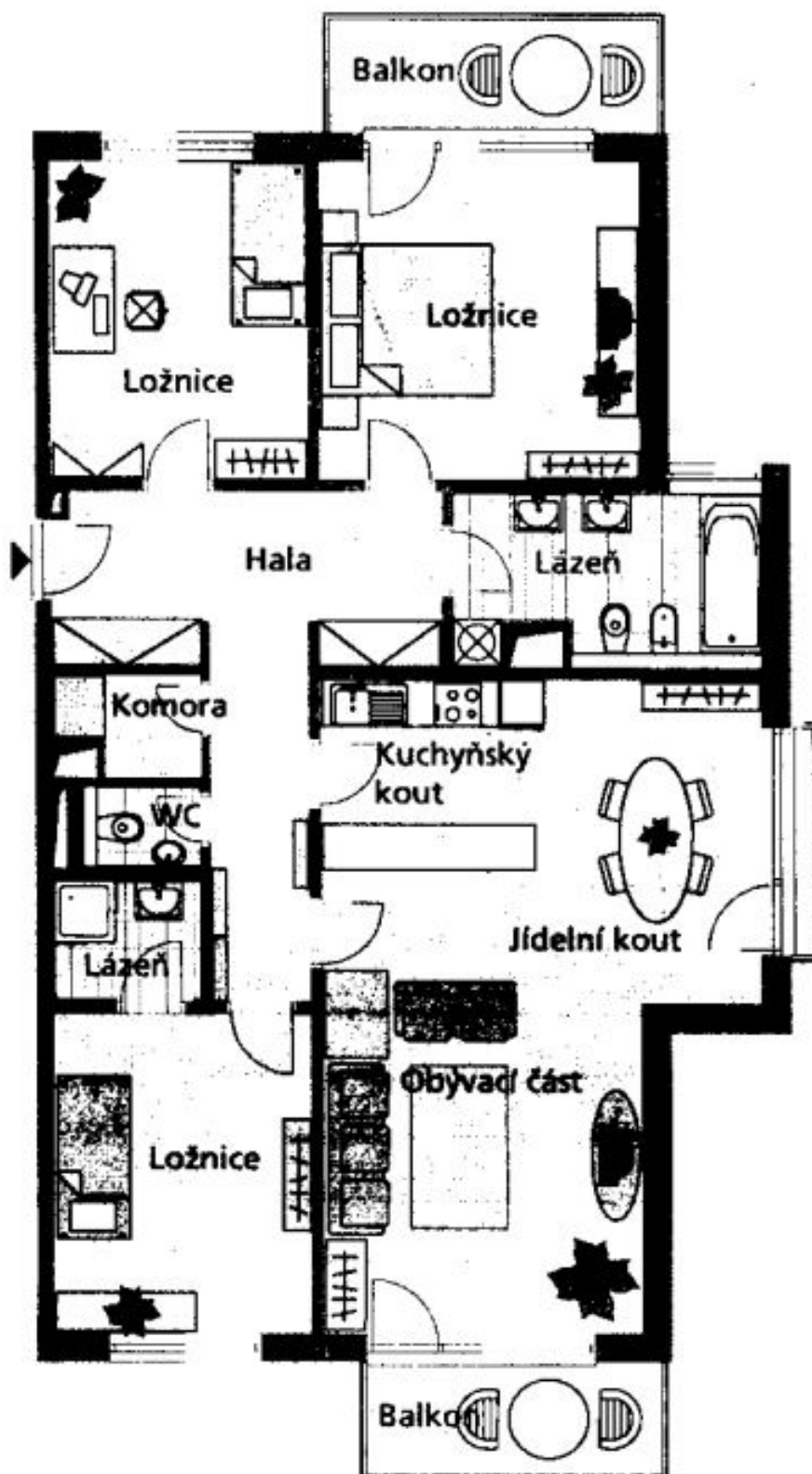


* Area of the unit according to the Civil Code. The area consists of the sum total area of the entire unit bounded by perimeter walls.

Apartment Three-bedroom (4+1)

Rented

131 m², Prague 6, Liboc, Naardenská



Apartment Three-bedroom (4+1)

Rented

131 m², Prague 6, Liboc, Naarendská

