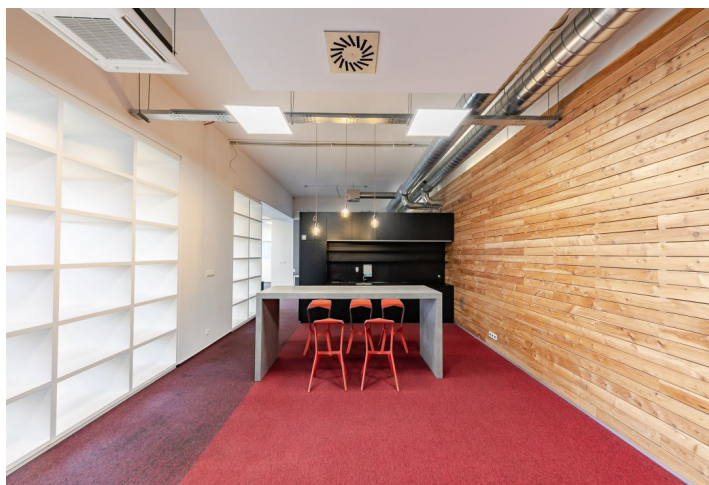


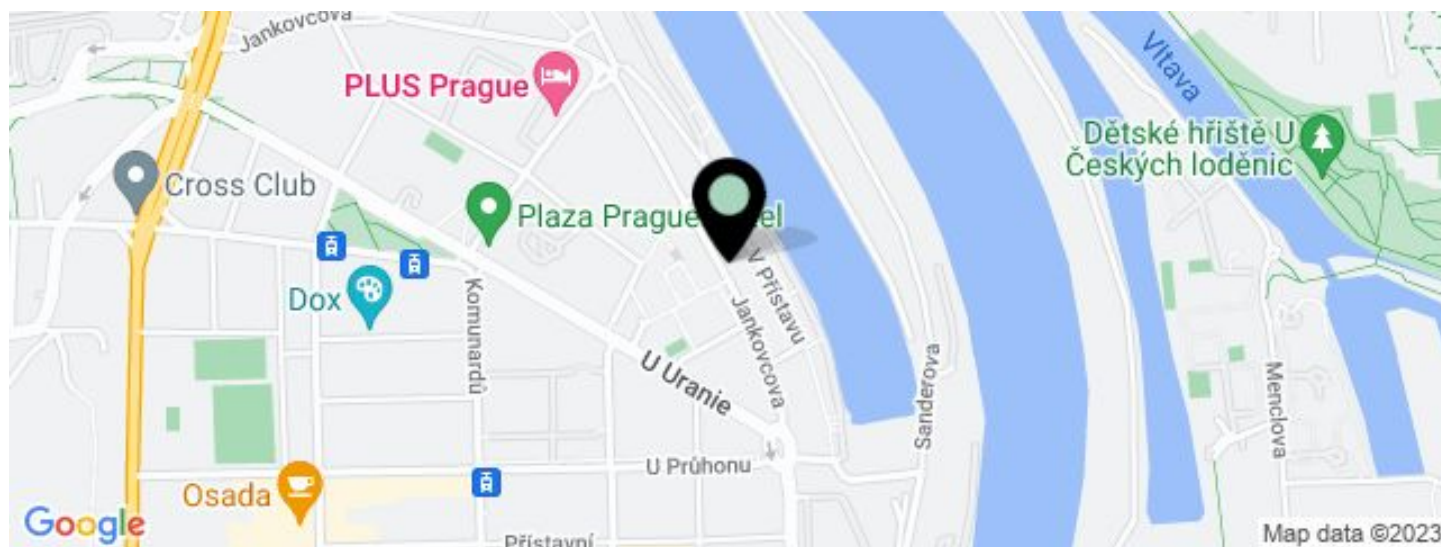
Office building

€ 12.00 / m<sup>2</sup> | CZK 300 / m<sup>2</sup>

299 m<sup>2</sup>, Prague 7, Holešovice, Jankovcova



## Office building

€ 12.00 / m<sup>2</sup> | CZK 300 / m<sup>2</sup>299 m<sup>2</sup>, Prague 7, Holešovice, Jankovcova

UNIT	AVAILABLE AREA	SERVICES	PARKING	MONTHLY RENT
Building A, Office space, 7th floor	299 m <sup>2</sup>	85 CZK monthly per m <sup>2</sup>	110 EUR / ps / month	€ 12 / m <sup>2</sup>

**Office building****€ 12.00 / m<sup>2</sup> | CZK 300 / m<sup>2</sup>**299 m<sup>2</sup>, Prague 7, Holešovice, Jankovcova

Service price	85 CZK monthly per m <sup>2</sup>
Total building area	21 000 m <sup>2</sup>
Tenant consumption	—
Parking	110 EUR
Parking service charges	—
Parking ratio	—
Certification	—
PENB	G
Reference number	15706

**An administrative complex including 5 buildings with 20,000 sq. m of office space and 5,000 sq. m of warehouse space. 24-hour security, 2 reception areas, 6 passenger lifts and 1 cargo lift.**

**Location:**

In close vicinity of tram stops with direct connections to metro stations Palmovka (line B), Nadraží Holešovice and Vltavská (line C). Good access by car, connection to D1, D8, D10 highways.

**Features and Services:**

2 receptions  
24-hour security  
Air condition  
Internet and telephone connection  
Carpets  
Lighting in lowered ceilings  
6 passenger lifts  
1 cargo lift  
Separate toilets and kitchenette available  
Parking on site  
Warehouse for lease

Rental and service charges are listed without VAT. Lessee pays no commission.