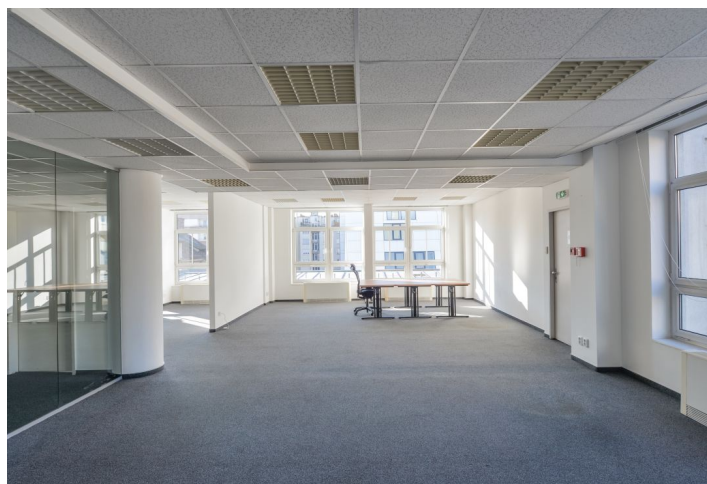


Office building

Rented

Prague 7, Holešovice, Na Maninách



Office building

Rented

Prague 7, Holešovice, Na Maninách

Service price	100 CZK monthly per m ²
Total building area	6 000 m ²
Tenant consumption	—
Parking	100 EUR
Parking service charges	—
Parking ratio	—
Certification	—
PENB	C
Reference number	15649

Six storey office building with two underground garage floors and central reception on ground floor. Typical floor 1 000 m² and 74 indoor parking places. Large office space for lease in administrative building, located in Holešovice district, one of commercial centers of Prague.

Location:

Good accessibility, one tram stop from Palmovka metro station (line B), 2 tram stops from Vltavská metro station (line C).

Features and Services:

Air-conditioning
Heating
Alarm
Internet
Telephone connection
Carpets
Integrated lighting in suspended ceilings
2 passenger lifts
W.C.s
Kitchenette
Electronic security system
Magnetic card access with 24/7 operation
Unit for seasonal cooling/heating
Openable windows

Rental and service charges listed without VAT. Lessee pays no commission.



Office building

Prague 7, Holešovice, Na Maninách

Rented

