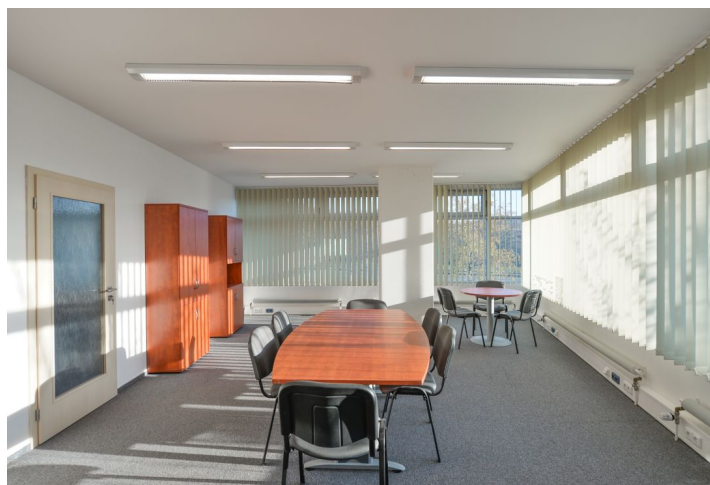
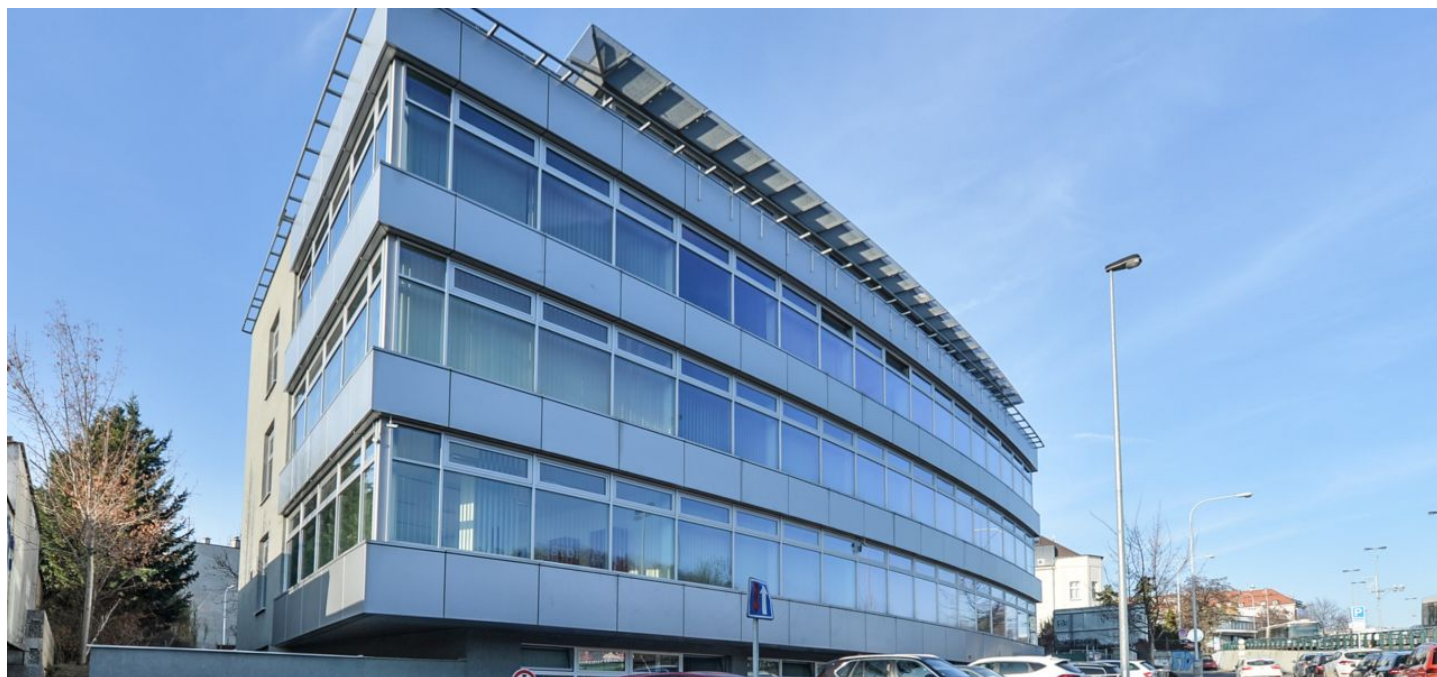


Office building

Prague 4, Krč, Čerčanská

Rented



Office building

Rented

Prague 4, Krč, Čerčanská

Service price	81 CZK monthly per m ²
Total building area	1 996 m ²
Tenant consumption	—
Parking	-
Parking service charges	—
Parking ratio	—
Certification	—
PENB	D
Reference number	15636

This administrative building offers office space for rent in a popular location of Prague 4 - Krč.

Clear office height of 2.85 m. The size of the rooms is from 15 m² to 50 m². It includes a kitchenette and toilets, carpeted floors, and luxury Italian furniture from the SPAGNOL brand on request. It is possible to add the company's name on the wall in the entrance hall and directional signs as needed.

Location:

A convenient location with good civic amenities in the area and excellent transport accessibility - there are several bus stops close-by. The building is located next to a main motorway at the merge point with the D1 motorway, with connections to the Southern Connector. The Kačerov metro station (line C) is 150 m away from the building.

Facilities and services:

- Elevator
- Carpet floors
- Directional signs
- Openable windows
- Heating and cooling
- Kitchenette on the floor

Rental and service charges are listed without VAT. Lessee pays no commission.