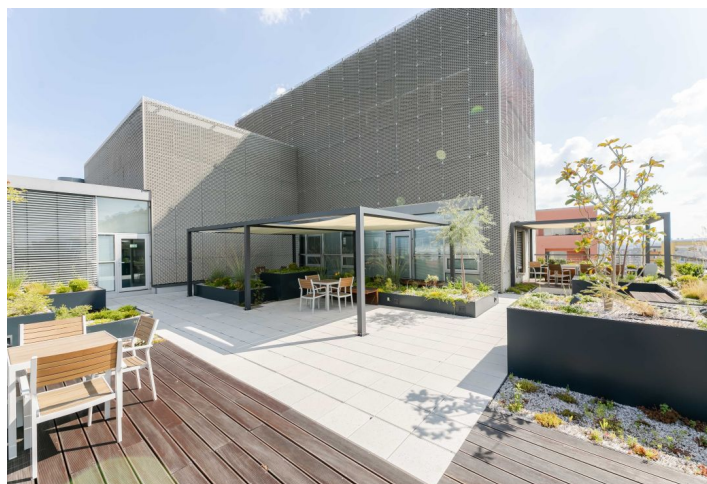
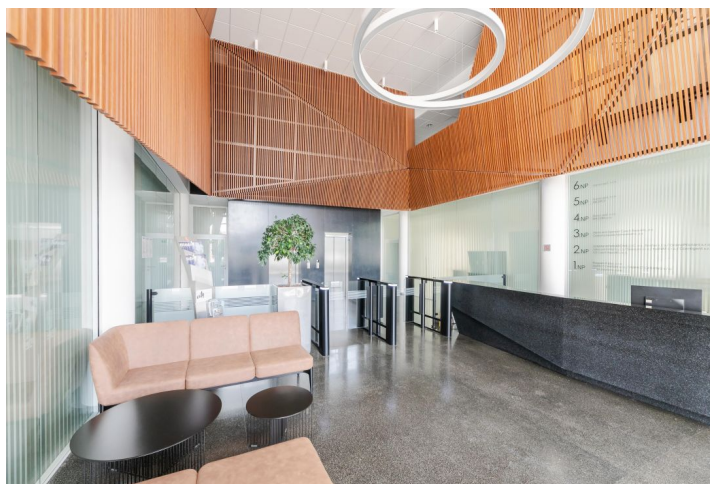


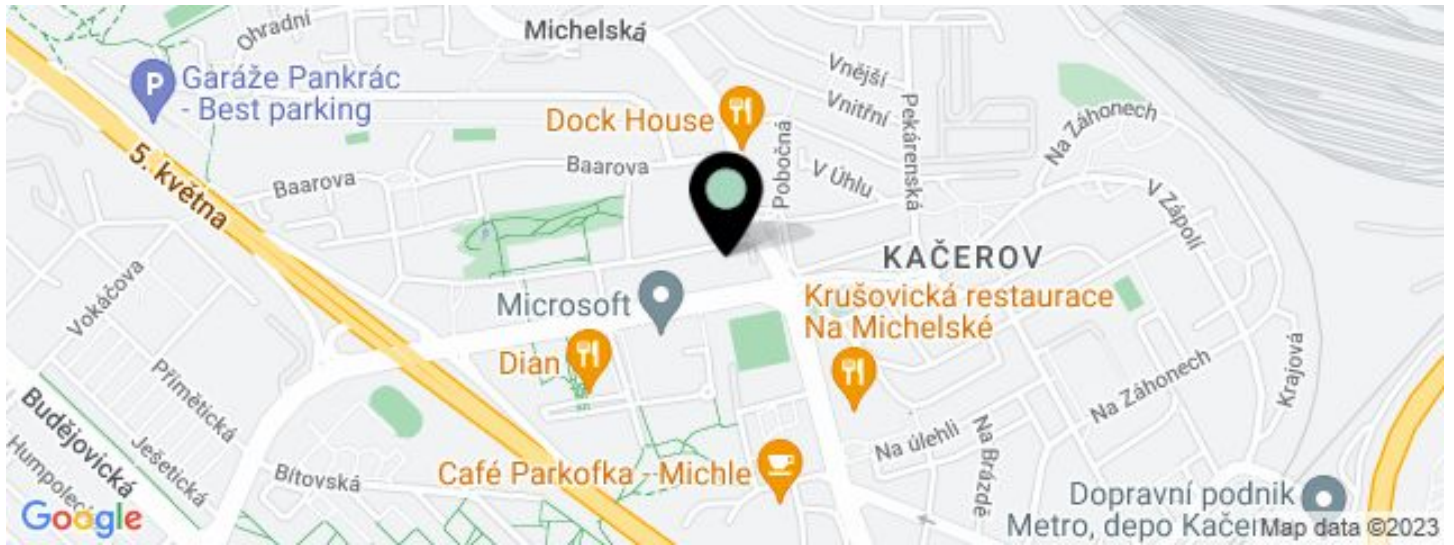
Office building

€ 16.00 / m² | CZK 400 / m²

622 m², Prague 4, Michle, Jemnická



Office building

€ 16.00 / m² | CZK 400 / m²622 m², Prague 4, Michle, Jemnická

UNIT	AVAILABLE AREA	SERVICES	PARKING	MONTHLY RENT
Office space, 2nd floor	622 m ²	190 CZK monthly per m ²	Yes	€ 16 / m ²

Office building

€ 16.00 / m² | CZK 400 / m²622 m², Prague 4, Michle, Jemnická

Service price	173 CZK monthly per m ²
Total building area	3 826 m ²
Tenant consumption	—
Parking	Yes
Parking service charges	—
Parking ratio	—
Certification	—
PENB	G
Reference number	15570

Modern office building from Kordovsky's architectural studio is located on the corner of Jemnická and Želetavská streets and offers over 4,000 sqm of office space for lease in Prague 4.

Location:

Very good accessibility by car and public transport – the Budějovická and Kačerov metro stations (line C) are just 2 minutes by bus or 8 minutes on foot. A shuttle bus connects the building with the Budějovická metro station. Easy access to Prague's Ring Road and to the D1 highway leading to Brno.

Features and services:

- Central reception
- 24/7 security service
- 24/7 access
- Green rooftop terrace for tenants
- Openable windows with external sunblinds
- Air-conditioning
- Raised floors
- Kitchenette and toilets on each floor
- Warehouse space
- Underground parking

Rental and service charges listed without VAT. Lessee pays no commission.



- 1 Atletický stadion
- 2 Dětské hřiště
- 3 Víceúčelové hřiště
- 4 Baarův park
- 5 Relax zóna a dětské hřiště
- 6 Relax zóna
- 7 Obchodní pasáž Filadelfie
- 8 Náměstí Ellen G. Whiteové
- 9 Obchodní pasáž Brumlovka
- 10 Náměstí Brumlovka
- 11 Park Brumlovka
- 12 Psí louka
- 13 Dětské hřiště
- 14 Mlhoviště
- 15 Olivka vlaščky
- 16 Brouk