

## Apartment Three-bedroom (4+kk)

Sold

150 m<sup>2</sup>, Prague 6, Dejvice, Velflíkova

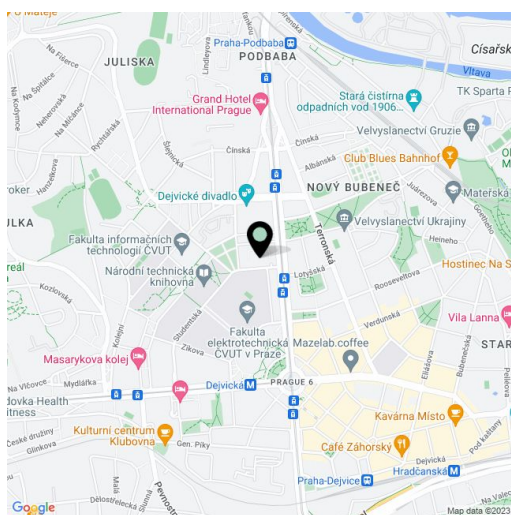


# Apartment Three-bedroom (4+kk)

**Sold**150 m<sup>2</sup>, Prague 6, Dejvice, Velflíkova

<b>Total area</b>	170 m <sup>2</sup>
<b>Floor area*</b>	150 m <sup>2</sup>
<b>Terrace</b>	20 m <sup>2</sup>
<b>Parking</b>	-
<b>Cellar</b>	Yes
<b>PENB</b>	G
<b>Reference number</b>	15522

Renovated in high standard, duplex apartment with air-conditioning, fireplace and terrace offering beautiful views of Prague Castle and Strahov hill, a few minutes from the Dejvická metro station and walking distance from the Stromovka Park. The apartment offers a spacious living room with dining area and fully equipped kitchen, 3 bedrooms, 2 bathrooms with underfloor heating, 3 toilets and storage room. Quality materials and workmanship: kitchen equipped with AEG appliances, American-style fridge, Vaillant boiler, Grohe bathroom fittings, Laufen ceramics, Ravak glass shower and bath; equipment includes maintenance-free patio, air-conditioning, security doors class 3, alarm. Apartment on the 5th and 6 floor after reconstruction (facade, roof, elevator, corridor, electricity, gas and others; repair fund prepaid for 5 years), all public amenities in the area and excellent access to the center. Interior 150 m<sup>2</sup>, terrace 20 m<sup>2</sup>, 5 m<sup>2</sup> pantry, cellar 15 m<sup>2</sup>.

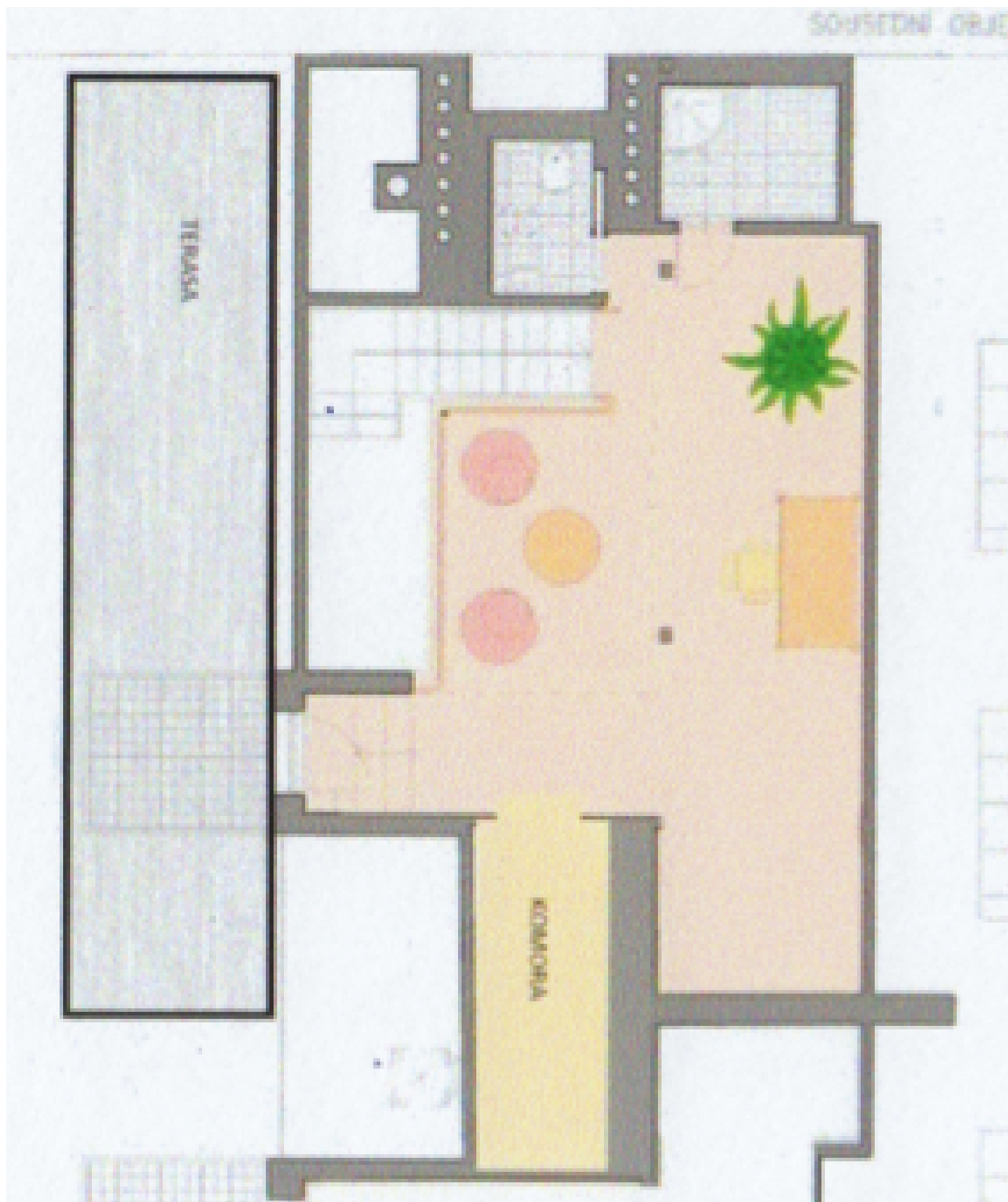


\* Area of the unit according to the Civil Code. The area consists of the sum total area of the entire unit bounded by perimeter walls.

## Apartment Three-bedroom (4+kk)

Sold

150 m<sup>2</sup>, Prague 6, Dejvice, Velflíkova



## Apartment Three-bedroom (4+kk)

Sold

150 m<sup>2</sup>, Prague 6, Dejvice, Velflíkova

