

Office building

Rented

Prague 1, Nové Město, Spálená



Office building

Rented

Prague 1, Nové Město, Spálená

Service price	172 CZK monthly per m ²
Tenant consumption	—
Parking	-
Parking service charges	—
Parking ratio	—
Certification	—
PENB	G
Reference number	15341

Office space for lease in a historic building in the city center, close to the National Street. The Neo-Classical building by Bedrich Bendelmayer from 1927, adapted in 1994 by architect Karel Prager for the sculptural participation of Olbram Zoubek.

Location:

The building is located in the heart of the metropolis and is easily accessible by public transport - close to Národní třída metro station (line B) and tram stops. Easy connection to important public roads and nearby train station. Good civic amenities thanks to neighboring Quadrio and My shopping centers.

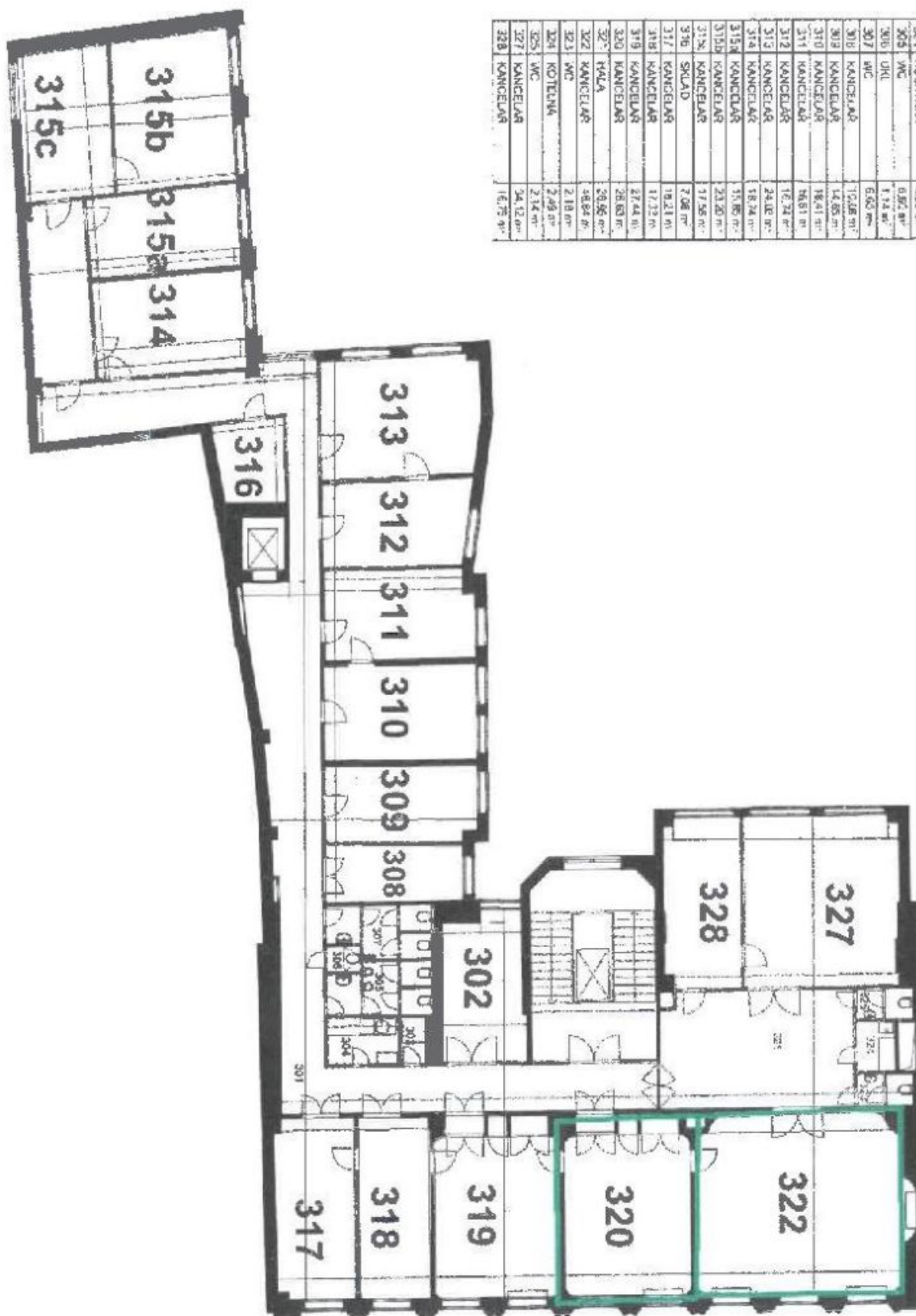
Features and Services:

Central reception
24/7 security service
Air conditioning
Central heating
Telephone lines
Internet
Openable windows
Wooden floors and carpets
Parking
Archive option
Warehouse space
Toilet and kitchenette

Rental and service charges are listed without VAT. Lessee pays no commission.



Č. JM.	UČELNOST/PROST. TI	PLOŠKA m ²
300	CHODBA	26,36 m ²
302	KANCELAR	15,98 m ²
303	SPRCHA	1,48 m ²
303	KUCHYŇKA	4,28 m ²
306	WC	6,82 m ²
306	WC	1,14 m ²
307	WC	6,00 m ²
308	KANCELAR	10,08 m ²
309	KANCELAR	14,05 m ²
310	KANCELAR	16,41 m ²
311	KANCELAR	16,81 m ²
312	KANCELAR	16,74 m ²
313	KANCELAR	24,02 m ²
314	KANCELAR	19,74 m ²
315a	KANCELAR	15,95 m ²
315b	KANCELAR	33,25 m ²
315c	KANCELAR	15,95 m ²
316	SKLAD	17,59 m ²
317	KANCELAR	7,28 m ²
317	KANCELAR	19,21 m ²
318	KANCELAR	17,03 m ²
319	KANCELAR	27,44 m ²
320	KANCELAR	26,82 m ²
321	HALA	26,26 m ²
322	KANCELAR	44,84 m ²
323	WC	2,18 m ²
324	KOTELNA	2,49 m ²
325	WC	2,14 m ²
327	KANCELAR	34,02 m ²
328	KANCELAR	16,78 m ²



Č. M.	UČEL MÍSTNOSTI	PLŮCHŇA m ²
301	CHODBA	36,30 m ²
302	KANCELAR	15,86 m ²
303	SPRCHA	1,42 m ²
304	KUCHYŇKA	4,28 m ²
305	WC	0,92 m ²
306	UHL	1,12 m ²
307	WC	0,62 m ²
308	KANCELAR	12,08 m ²
309	KANCELAR	14,85 m ²
310	KANCELAR	16,41 m ²
311	KANCELAR	16,61 m ²
312	KANCELAR	12,72 m ²
313	KANCELAR	24,12 m ²
314	KANCELAR	18,72 m ²
315a	KANCELAR	15,86 m ²
315b	KANCELAR	23,26 m ²
315c	KANCELAR	17,58 m ²
316	SKLAD	7,08 m ²
317	KANCELAR	19,21 m ²
318	KANCELAR	12,22 m ²
319	KANCELAR	27,44 m ²
320	KANCELAR	28,63 m ²
321	HALA	28,95 m ²
322	KANCELAR	48,84 m ²
323	WC	2,18 m ²
324	KOTELNA	2,49 m ²
325	WC	2,14 m ²
326	KANCELAR	24,12 m ²
328	KANCELAR	16,75 m ²