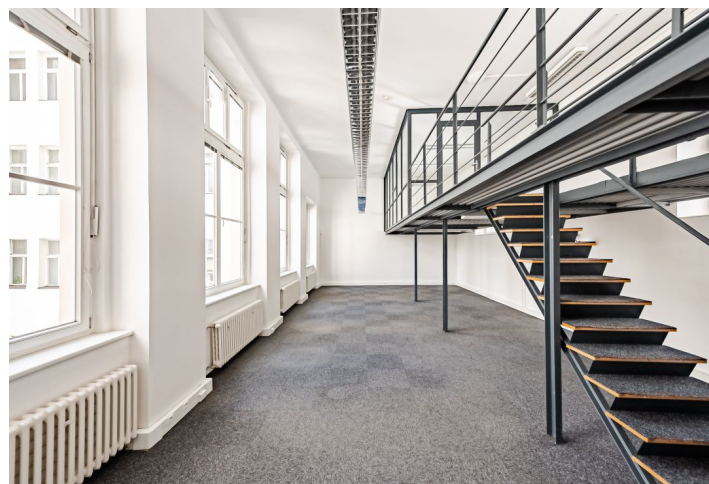


# Office building

Ask for price

Prague 1, Nové Město, Opletalova



## Office building

Ask for price

Prague 1, Nové Město, Opletalova

Service price	included
Total building area	2 950 m <sup>2</sup>
Tenant consumption	—
Parking	Yes
Parking service charges	—
Parking ratio	—
Certification	—
PENB	G
Reference number	15251

Renovated historic building offers office space for lease in the centre of Prague, on the border of the Old and New Town. It consists of two five-storey buildings and parking areas in the courtyard. The property offers a combination of historical architecture with modern elements. The building is equipped with a chip entry system, fibre optic internet cabling, encryption system and connection to the central reception. Openable windows, air conditioning, sanitary facilities on each floor and 14 parking spaces.

**Location:**

Situated in a strategic location in New Town, the building is in close vicinity to Hlavní Nadraží – the main railway station, the Masaryk railway station, and the Florenc bus station as well. Outstanding accessibility by car and public transportation – close to city highway with direct connection to D1 highway, within walking distance of metro stations Hlavní Nádraží (line C), Náměstí Republiky (line B), and Florenc (lines B, C); tram stop directly next to the building.

**Features and Services:**

Bright and fully air-conditioned space facing a park  
Lighting fixtures  
Computer network with telephones  
Internet connection  
Separate toilets and a kitchenette on each floor

Rents and charges listed without VAT. Lessee pays no commission.

Aktuální půdorys

