

Office building

Rented

Prague 1, Staré Město, V Celnici



Office building

Rented

Prague 1, Staré Město, V Celnici

Service price	155 CZK monthly per m ²
Total building area	12 000 m ²
Tenant consumption	—
Parking	5 500 CZK
Parking service charges	—
Parking ratio	—
Certification	—
PENB	C
Reference number	15248

Administrative building with office space for lease in the center of Prague with excellent access by car and public transport. Building also offers underground parking with more than 400 parking spaces.

Location:

Outstanding accessibility by car and public transportation - close to Náměstí Republiky metro station (line B), important tram hub and Masaryk train station and close to city highway with direct connection to the D1 highway.

Features and Services:

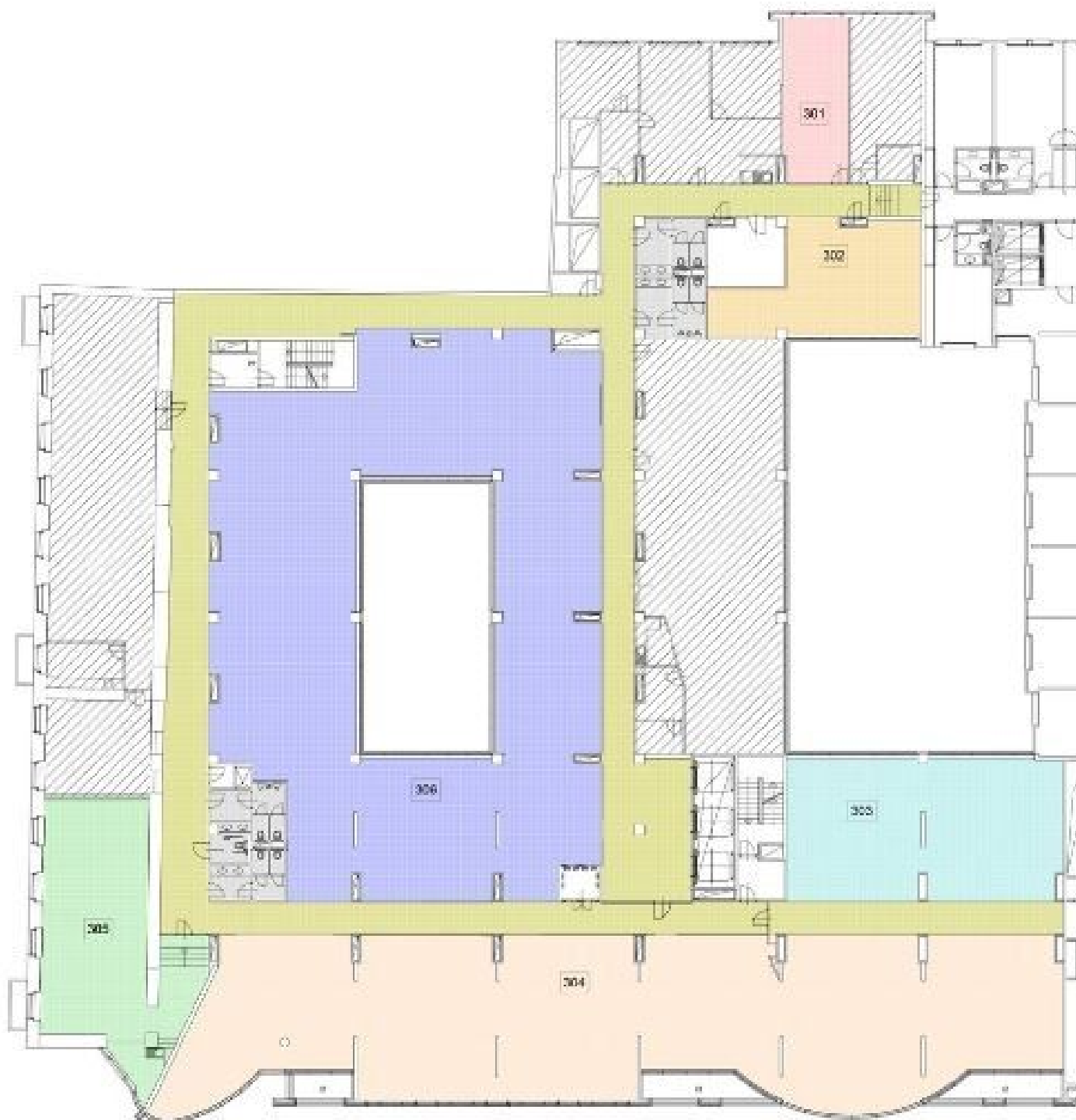
Lowered ceilings with built-in lighting
Double floors
Carpet
Air conditioning
Heating with backup power supply
Kitchenette
Toilets
24/7 security
Representative reception
Chip card access

Rental and service charges listed without VAT. Lessee pays no commission.

Office building

Prague 1, Staré Město, V Celnici

Rented



Office building

Rented

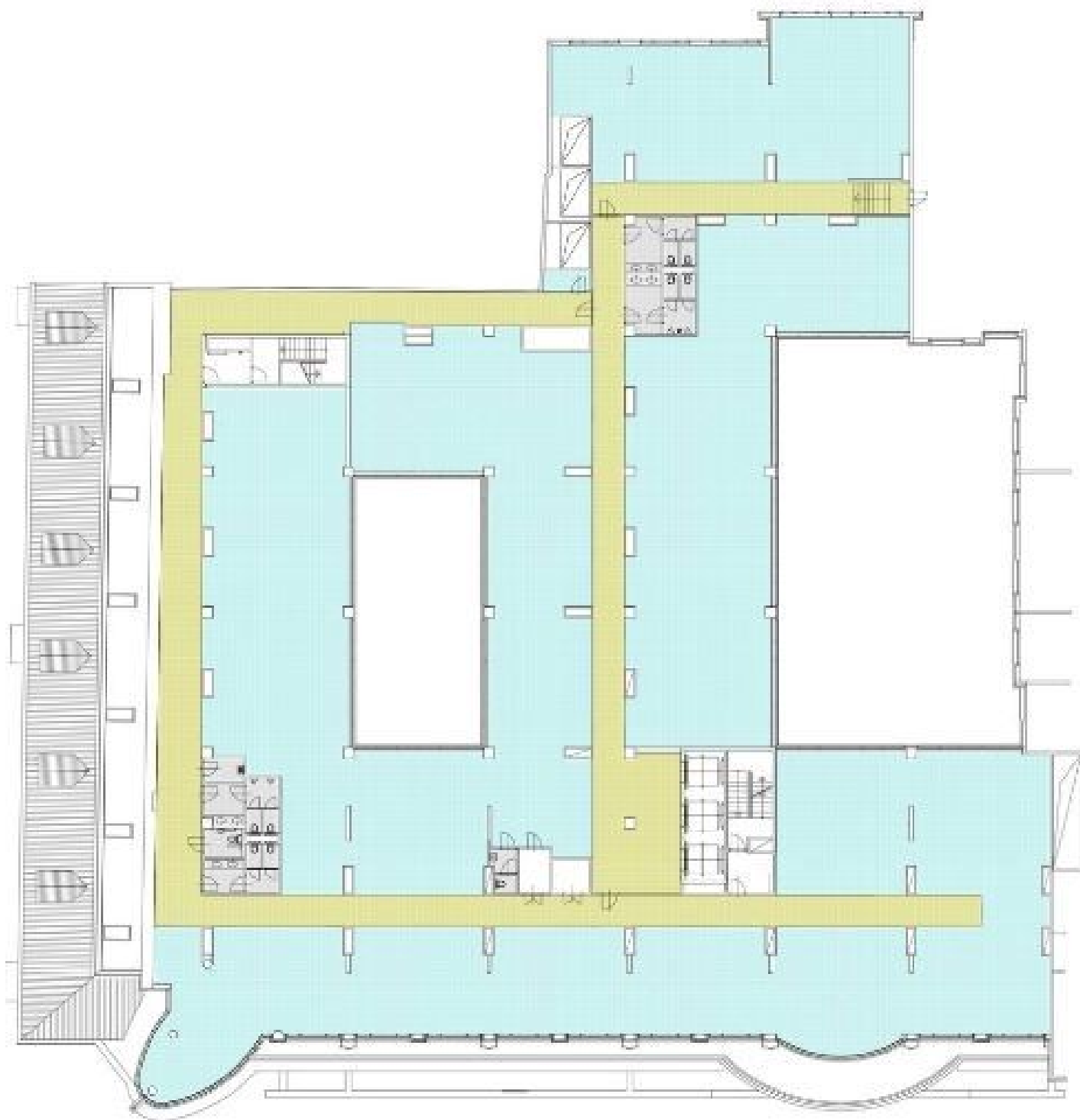
Prague 1, Staré Město, V Celnici



Office building

Prague 1, Staré Město, V Celnici

Rented



Office building

Prague 1, Staré Město, V Celnici

Rented



Office building

Prague 1, Staré Město, V Celnici

Rented

