

# Office building

Rented

Prague 1, Staré Město, Národní



## Office building

**Rented**

Prague 1, Staré Město, Národní

Service price	44 177 CZK monthly
Total building area	1 618 m <sup>2</sup>
Tenant consumption	—
Parking	188 EUR
Parking service charges	—
Parking ratio	—
Certification	—
PENB	D
Reference number	15224

**Seven-storey administrative building offers high quality office premises including underground parking.**

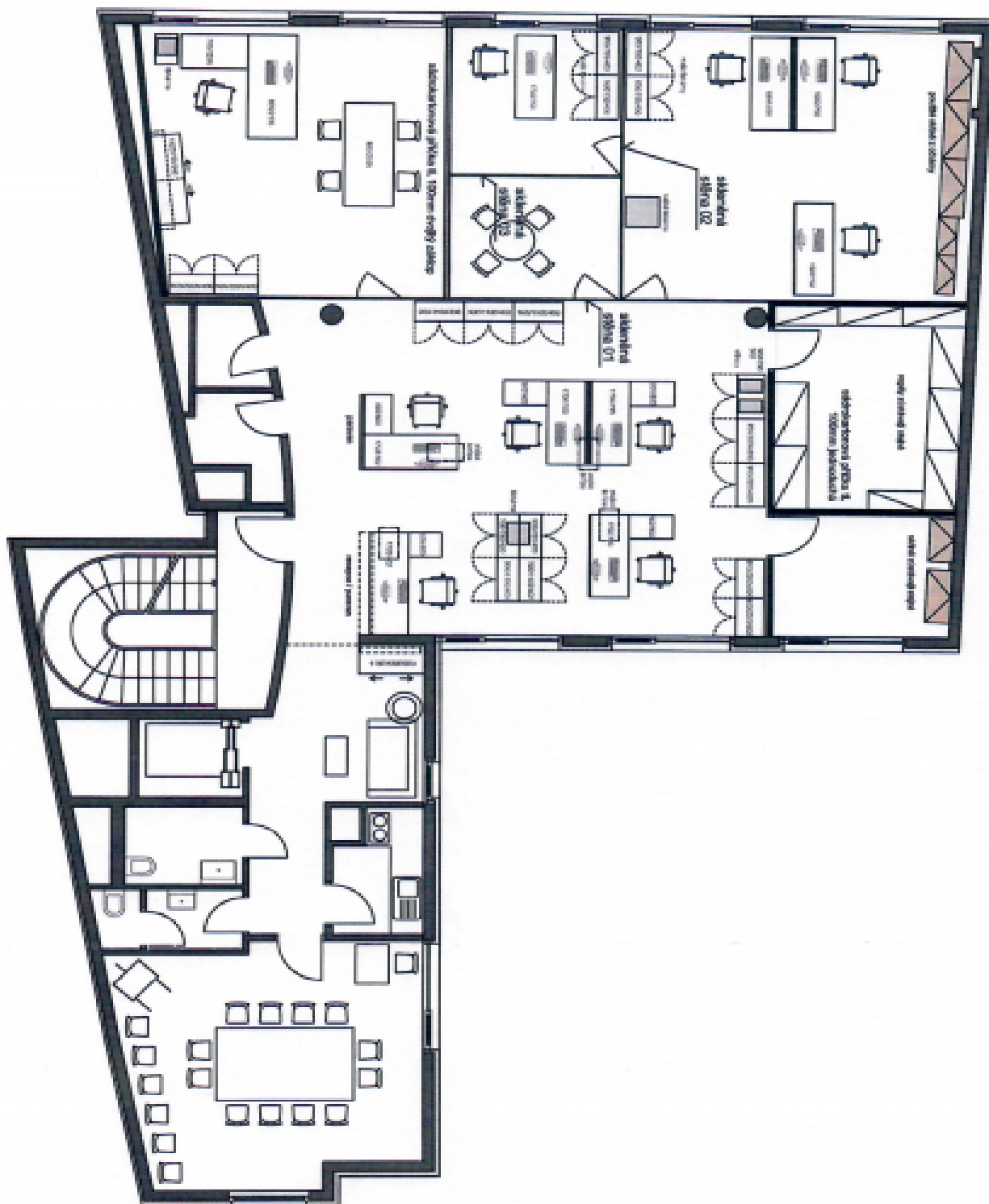
**Location:**

The building is situated in the city center, just a few steps from Wenceslas Square and the Franciscan Garden. All services are in immediate vicinity. Outstanding accessibility by public transportation - directly at the Můstek metro station (line B, A), within walking distance of tram stations.

**Features and Services:**

- Air-conditioning
- Lighting in suspended ceilings
- Carpeted floors
- Separate WC and kitchenette
- 24/7 reception
- Lift in the building
- Cable management systems
- Mechanical ventilation with cooling
- Parking in the building

Rental and service charges listed without VAT. Lessee pays no commission.



STORBA BYTNÁŘSKÝCH