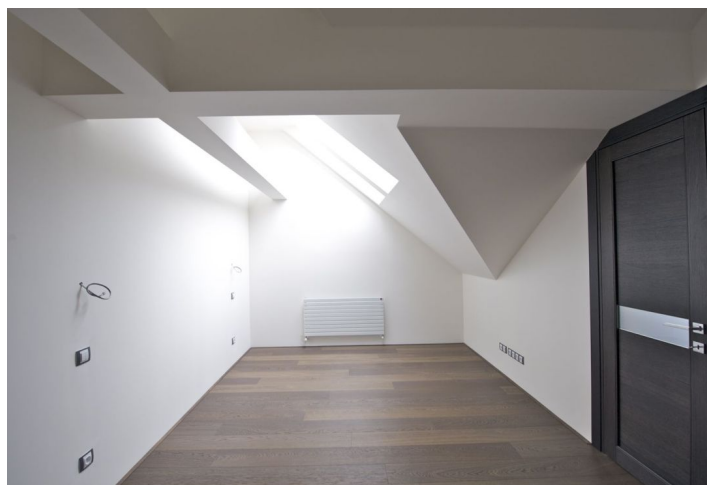
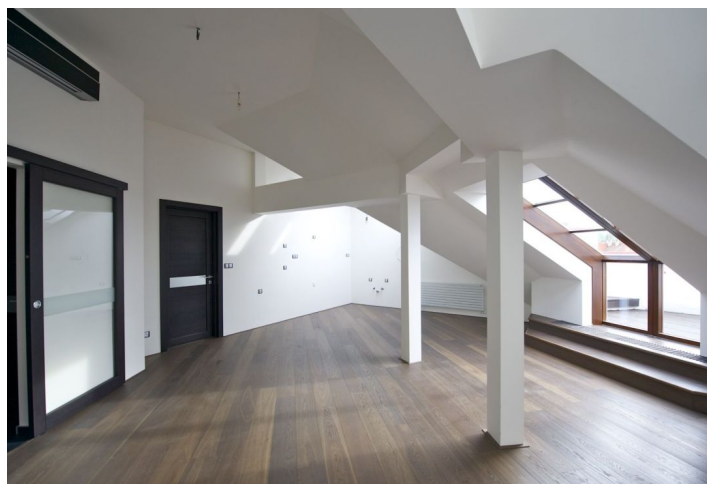


Apartment Two-bedroom (3+kk)

Sold

120 m², Prague 10, Vršovice, Moskevská



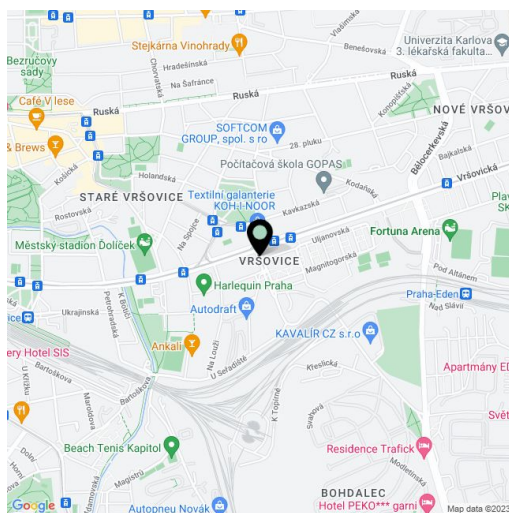
Apartment Two-bedroom (3+kk)

Sold120 m², Prague 10, Vršovice, Moskevská

Total area	127 m ²
Floor area*	120 m ²
Terrace	7 m ²
Parking	-
Cellar	Yes
PENB	G
Reference number	15197

New attic apartment for sale with terrace situated on the 7th floor of an apartment building situated close to the Havlíčkovy sady park, 3 minute walk to a tram station.

The apartment offers entry hall with space for built-in wardrobes, open plan living room with kitchen, dining area and access to a terrace, bedroom with a walk-in closet, 2 bathrooms, guest toilet and storage room. Features include wooden floors, Italian doors, high-quality bathroom fixtures and fittings, preparation for kitchen installation, and air-conditioning. The purchase price includes extra storage room in the attic. Interior 120.3 m², terrace 6.7 m², storage room 9,1 m².



* Area of the unit according to the Civil Code. The area consists of the sum total area of the entire unit bounded by perimeter walls.

Apartment Two-bedroom (3+kk)

Sold

120 m², Prague 10, Vršovice, Moskevská

