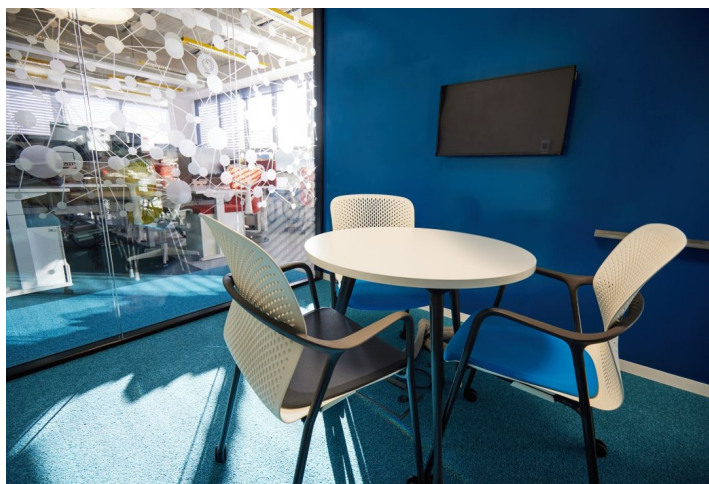


Office building

Rented

Prague 5, Stodůlky, Bucharova



Office building

Rented

Prague 5, Stodůlky, Bucharova

Service price	118 CZK monthly per m ²
Total building area	31 199 m ²
Tenant consumption	—
Parking	130 EUR
Parking service charges	—
Parking ratio	—
Certification	—
PENB	G
Reference number	15184

Office space for lease in a modern office building, which was built in 2015 and represents more than 31,000 sq. m of office space with 533 underground parking spaces. Open space layout with meeting rooms, phone boxes, lounge areas and built-in storage. It also includes a terrace and an original meeting room that won the "Meeting Room of the Year" award in 2017. Possibility to purchase current office furniture.

Location:

Good accessibility by car and public transport - direct access to the Nové Butovice metro station (line B), Václav Havel Airport is about 10 minutes away by car, city centre 20 minutes.

Features and Services:

Clear office height 3m
Chilled beams
Air-ventilation
Sprinklers
Smoke detectors
Electronic fire alarm
Representative reception
Openable windows
Terraces
Design furniture

Rental and service charges listed without VAT. Lessee pays no commission.

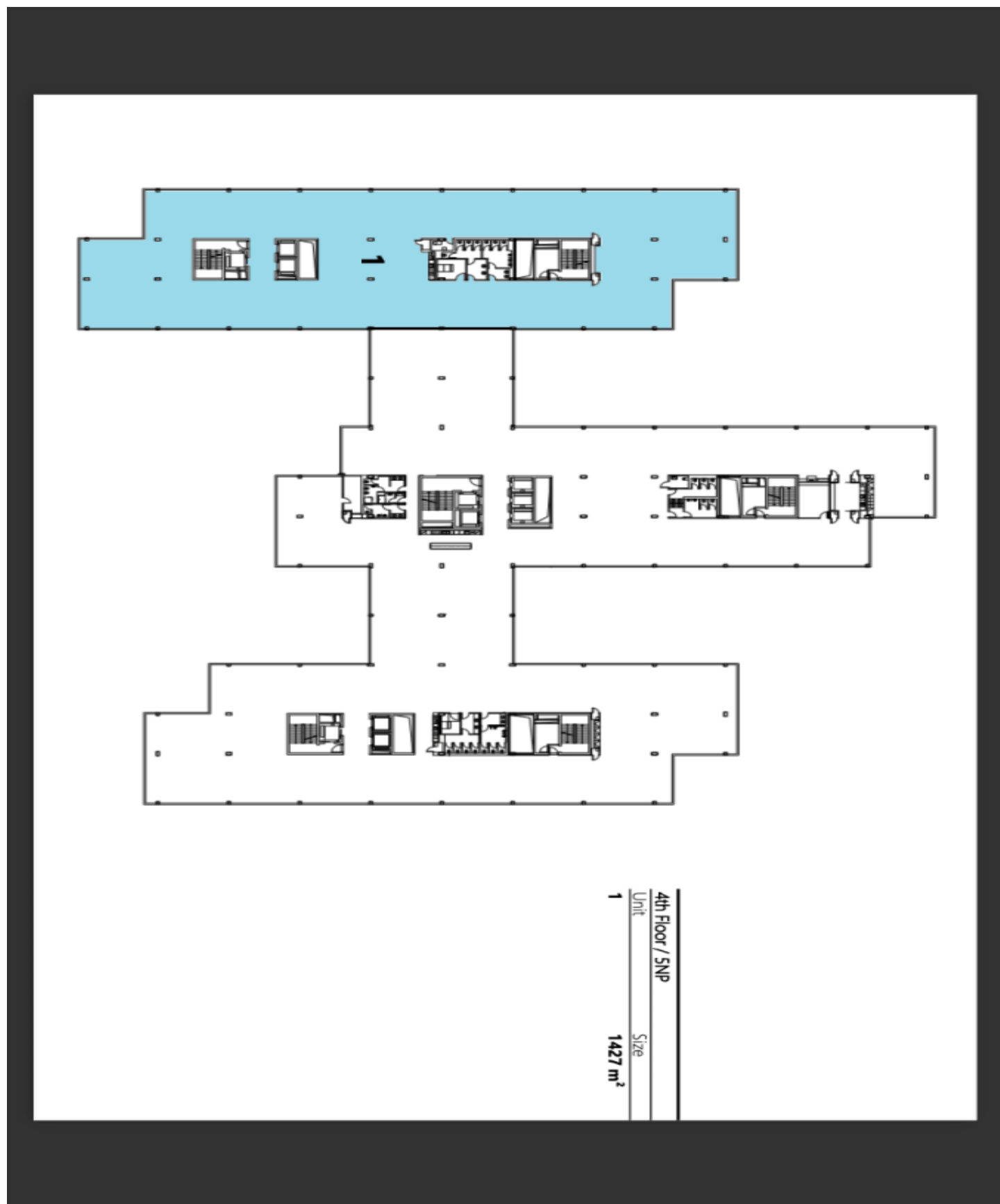
Office building

Prague 5, Stodůlky, Bucharova

Rented



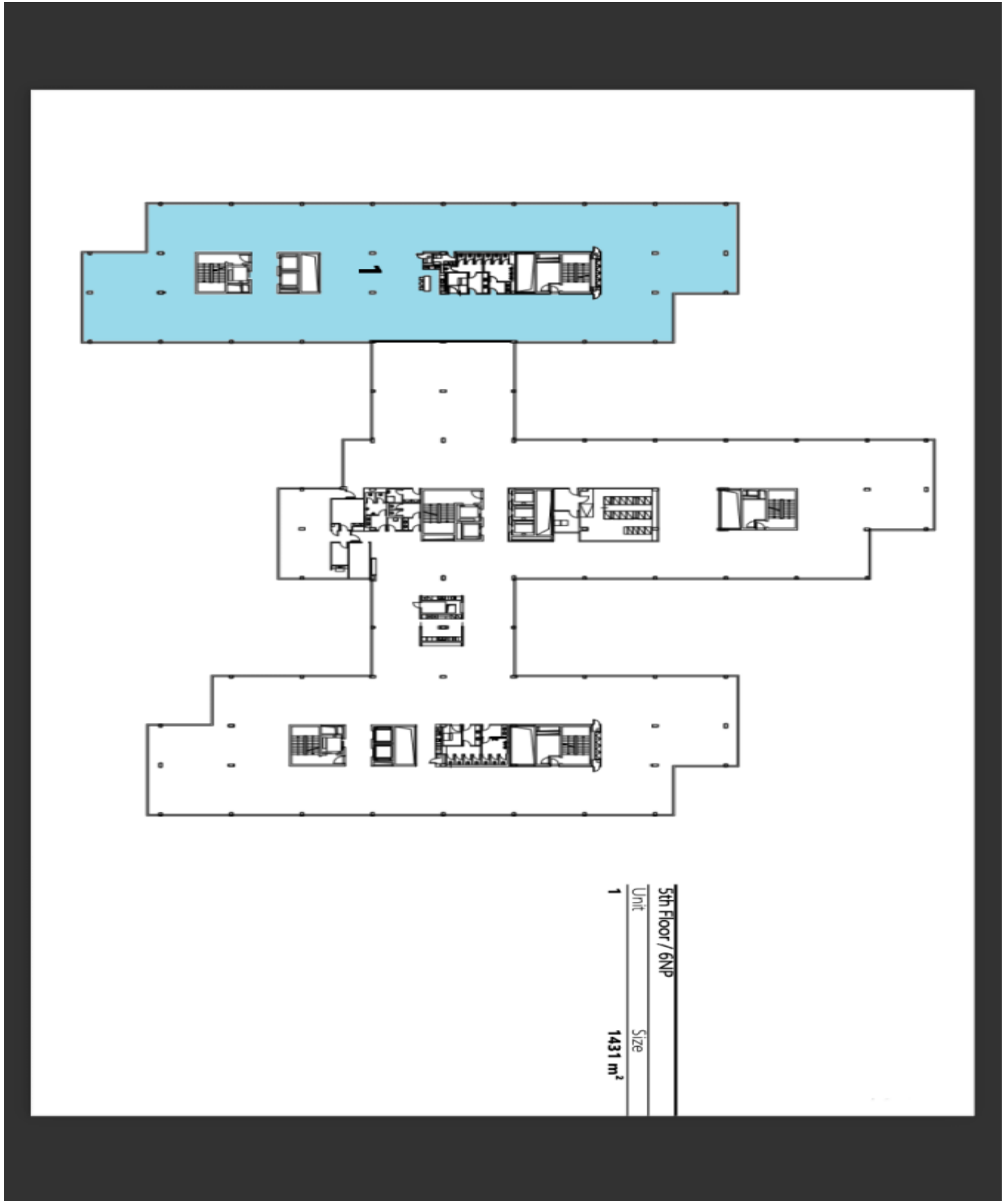
3rd Floor / ANP	Size
1	1518 m ²



Office building

Rented

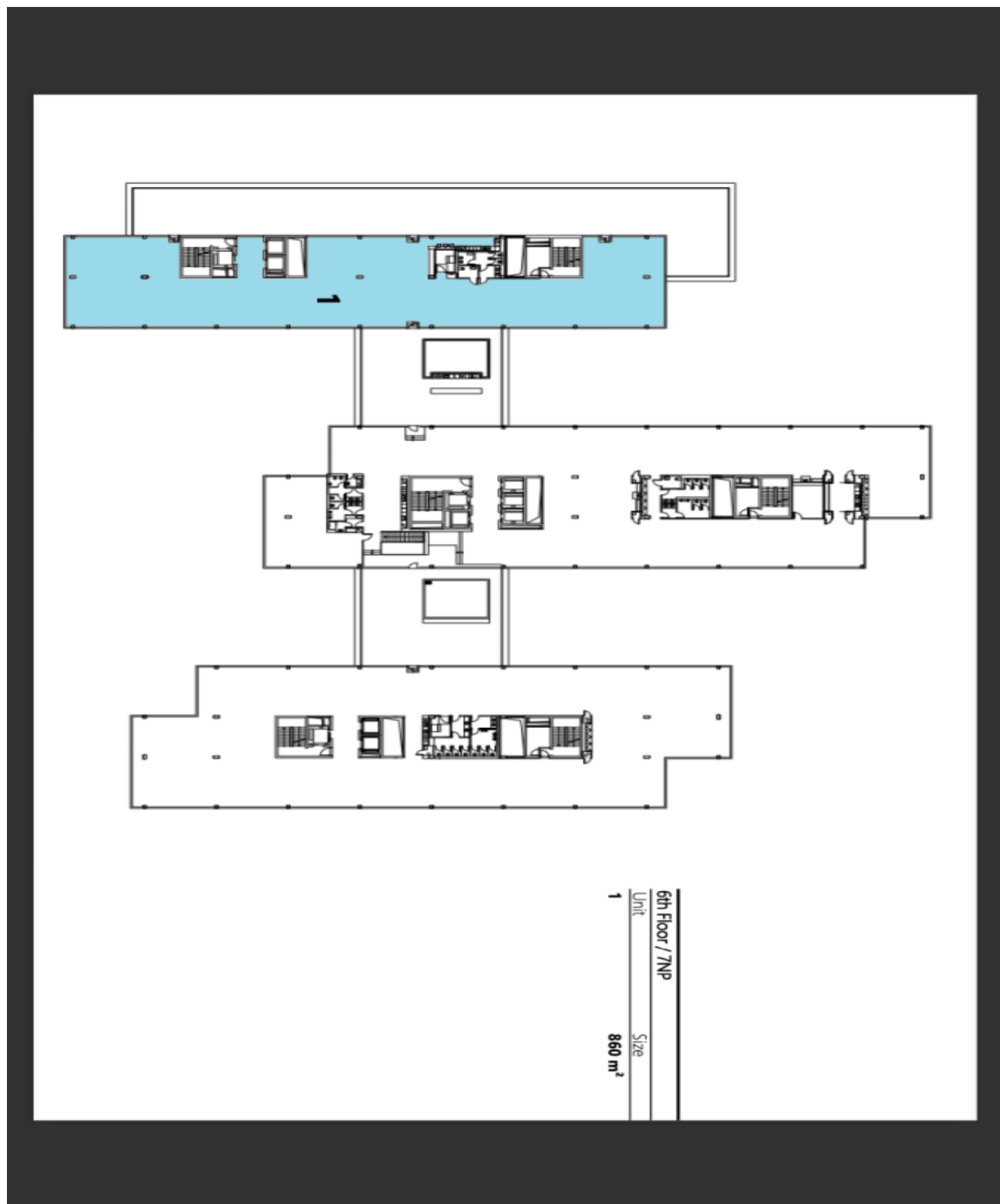
Prague 5, Stodůlky, Bucharova



Office building

Rented

Prague 5, Stodůlky, Bucharova



Office building

Rented

Prague 5, Stodůlky, Bucharova

