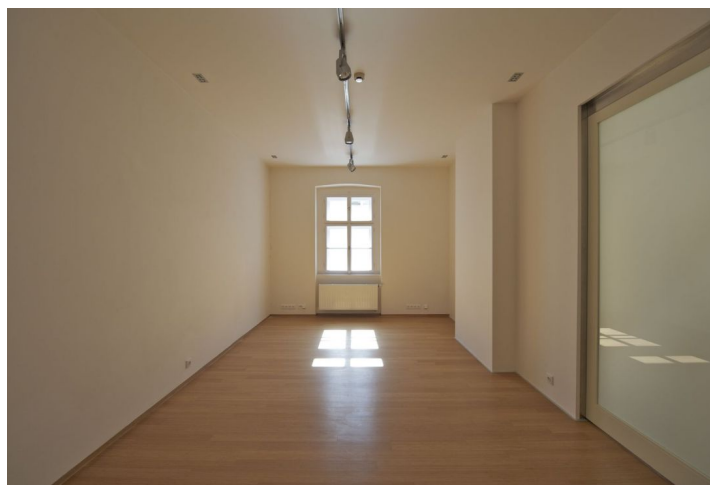


Apartment Two-bedroom (3+kk)

Sold

108 m², Prague 1, Nové Město, Truhlářská

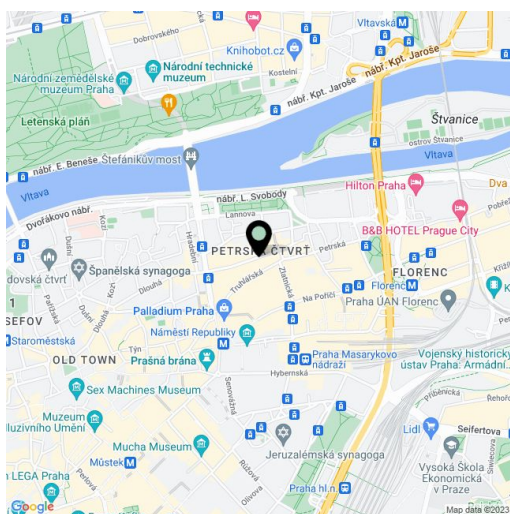


Apartment Two-bedroom (3+kk)

Sold108 m², Prague 1, Nové Město, Truhlářská

Total area	108 m ²
Parking	-
Cellar	-
PENB	G
Reference number	15171

Centrally located quality modern 2-bedroom apartment on the 5th floor of a classic late 19th century building, superbly renovated with attention to detail and retrofitted with a lift. Offering modern living standard, high quality finishings and a lively central location, the apartment is situated in a quiet street just steps from Náměstí Republiky Square with the Palladium shopping mall, tram stops and metro station. A 10 minute walk to Old Town as well as to Wenceslas Square. The apartment features a spacious entry hall, bright living room with a fireplace and a fully fitted open kitchen, master bedroom with an en-suite bathroom (bath tub, shower, sink, toilet), and a guest toilet with sink. Air-conditioning, top materials, bamboo flooring, heated tiles in the bathroom, central gas heating, sliding glass interior doors, alarm that can be connected to a security agency, video entry phone, camera system in the building. Interior 107.6 m².



* Area of the unit according to the Civil Code. The area consists of the sum total area of the entire unit bounded by perimeter walls.

Apartment Two-bedroom (3+kk)

Sold

108 m², Prague 1, Nové Město, Truhlářská

