

Apartment Four-bedroom (5+kk)

Rented

181 m², Prague 3, Vinohrady, Laubova



Apartment Four-bedroom (5+kk)

Rented

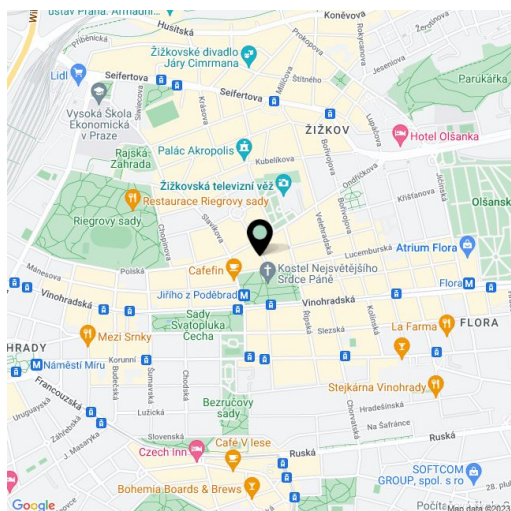
181 m², Prague 3, Vinohrady, Laubova

Total area	196 m ²
Floor area*	181 m ²
Balcony	15 m ²
Parking	Garage parking.
Garage	Yes
Cellar	Yes
Service price	Deposit for building charges and utilities CZK 12,000/month.
PENB	G
Reference number	15037
Available from	Immediately

This high-quality designer apartment with two balconies (15 + 1 sq. m.) facing a quiet courtyard is on the fourth floor of a fully refurbished classic building with an elevator. Conveniently located in a quiet part of a popular residential part of Vinohrady with full amenities, just steps from the Jiřího z Poděbrad metro station, a short walk to Riegrovy Sady Park.

With quality materials and finishes, the interior features a living room with a fully fitted open plan kitchen, four bedrooms all with built-in wardrobes, a full master bathroom, two shower bathrooms with a toilet, and an entry hall.

Tall clean lines, wooden floors, heated tiles in the bathrooms, French windows, plenty of built-in storage, security door, recessed lighting, central switch, washer, dryer, satellite and Internet connection, alarm that can be connected to a security agency, video entry phone. Designed by the renowned Donlic studio. Garage parking available for CZK 5,000/month.

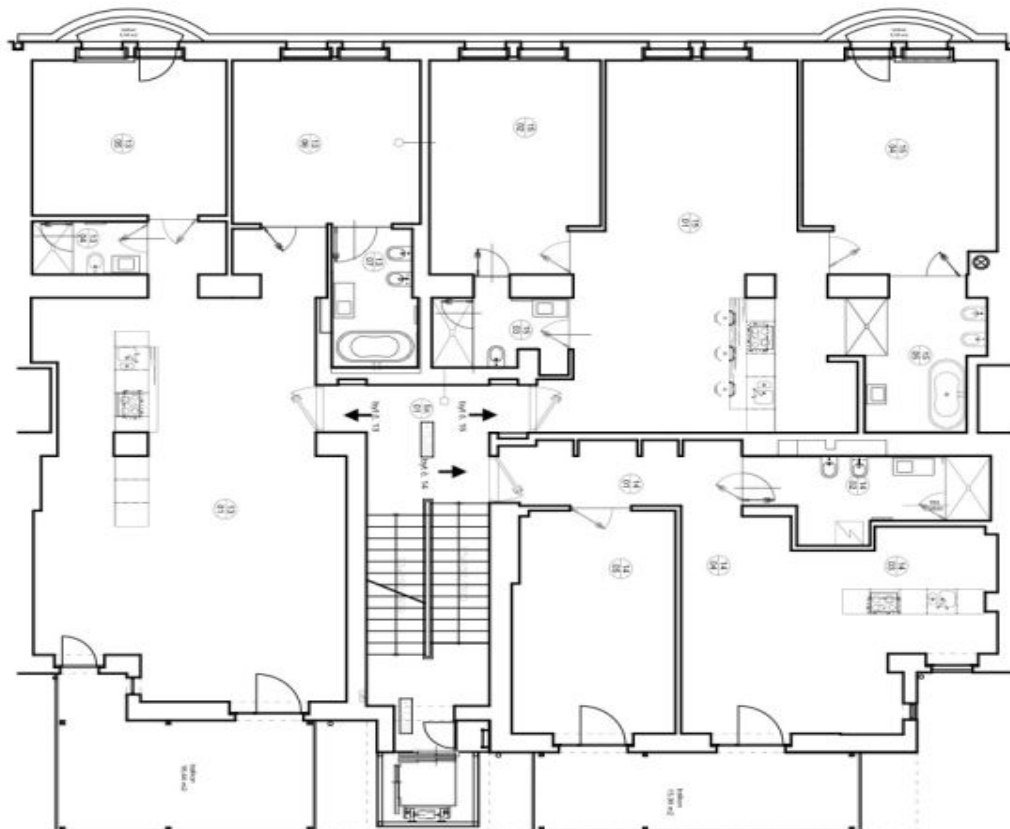


* Area of the unit according to the Civil Code. The area consists of the sum total area of the entire unit bounded by perimeter walls.

Apartment Four-bedroom (5+kk)

Rented

181 m², Prague 3, Vinohrady, Laubova



5.NP

BYT 5.13		
OZN.	NÁSTROJ	m ²
1301	obývací pokoj s kuchyní	70,85
1302	koupelna I.	3,49
1303	ložnice I.	17,55
1304	ložnice II.	17,65
1305	koupelna II.	6,63
BYT 5.13 celkem		116,17

BYT 5.14		
OZN.	NÁSTROJ	m ²
1401	chodba	8,91
1402	koupelna	9,32
1403	ložnice s jídelnou	18,85
1404	obývací pokoj	44,37
1405	ložnice	20,37
BYT 5.14 celkem		72,52

BYT 5.15		
OZN.	NÁSTROJ	m ²
1501	obývací pokoj s kuchyní	49,25
1502	ložnice I.	20,34
1503	koupelna I.	5,75
1504	ložnice II.	22,81
1505	koupelna II.	10,19
BYT 5.15 celkem		108,32

5.NP		
část	rozloha	úroveň
	26,15	5. patro