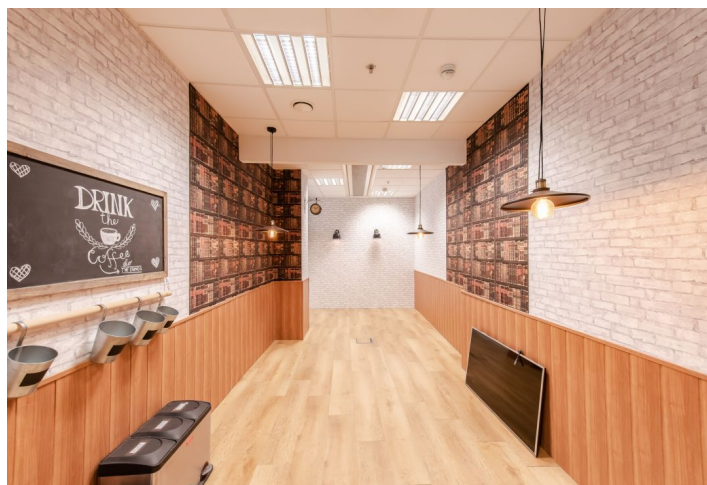


Office building

Rented

Prague 4, Krč, Antala Staška



Office building

Rented

Prague 4, Krč, Antala Staška

Service price	100 CZK monthly per m ²
Total building area	11 589 m ²
Tenant consumption	—
Parking	120 EUR
Parking service charges	—
Parking ratio	—
Certification	—
PENB	B
Reference number	14810

Office building with office space for rent benefits from location adjacent to shopping centre, nearby facilities which include supermarket, restaurants, cafés, shops, solarium and banks - all within two minutes walk. Sports facilities and hotels are also within walking distance.

Location:

Office building is easy to get to, no matter how you choose to travel. Strategically located above the Budejovická metro station (C line) and only two minutes drive from the city arterial road, it provides excellent access to both central Prague and national motorway network.

Features and Services:

Access and security service 24/395
 Underground parking garage with 156 parking places
 Environmentally friendly air conditioning
 Raised floors, suspended ceilings
 Openable windows
 Security cameras in the garages and receptions
 Facility management in the building
 Sprinklers
 Openable windows
 External blinds
 Access to magnetic cards
 Central reception
 CCTV

Rental and service charges listed without VAT. Lessee pays no commission.

434 m² 3. NP (2. patro)

