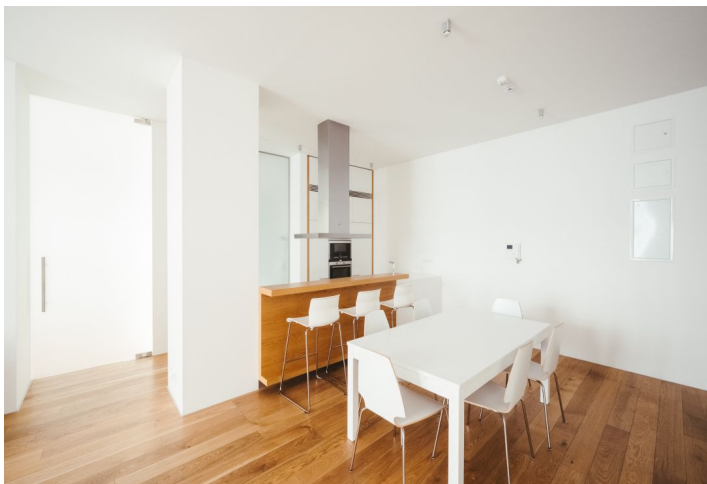


Apartment Two-bedroom (3+kk)

Rented

109 m², Prague 3, Vinohrady, Laubova



Apartment Two-bedroom (3+kk)

Rented

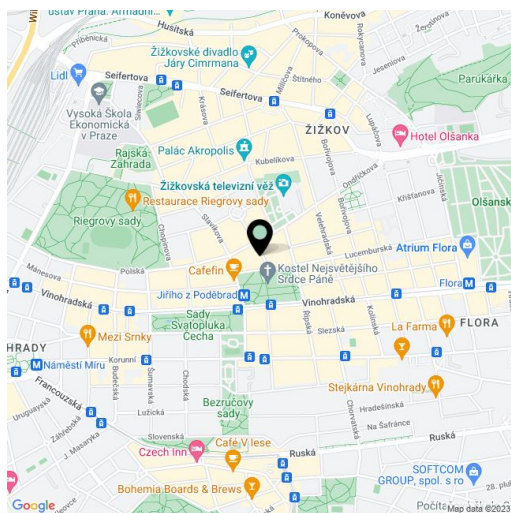
109 m², Prague 3, Vinohrady, Laubova

Total area	109 m ²
Parking	-
Cellar	-
Service price	Deposit for common building charges and utilities CZK 8,000/month.
PENB	G
Reference number	14800
Available from	Immediately

Architect designed 2-bedroom 2-bathroom partially furnished flat on the 3rd floor of a fully refurbished classic building with a lift. Conveniently located in a quiet part of the popular residential area of Vinohrady with full amenities, just steps from Jiřího z Poděbrad metro station, a short walk to Riegrovy Sady Park.

With quality materials and finishes, the apartment features living room with a fully fitted open plan kitchen with integrated appliances and lots of cupboard space, two bedrooms with built-in wardrobes, full bathroom, shower bathroom with toilet, and laundry cupboard.

Tall clean lines, wood floors, security door, recessed lighting, central switch, washer, dryer, satellite connection, alarm that can be connected to a security agency, video entry phone. Design by the renowned Donlic studio.

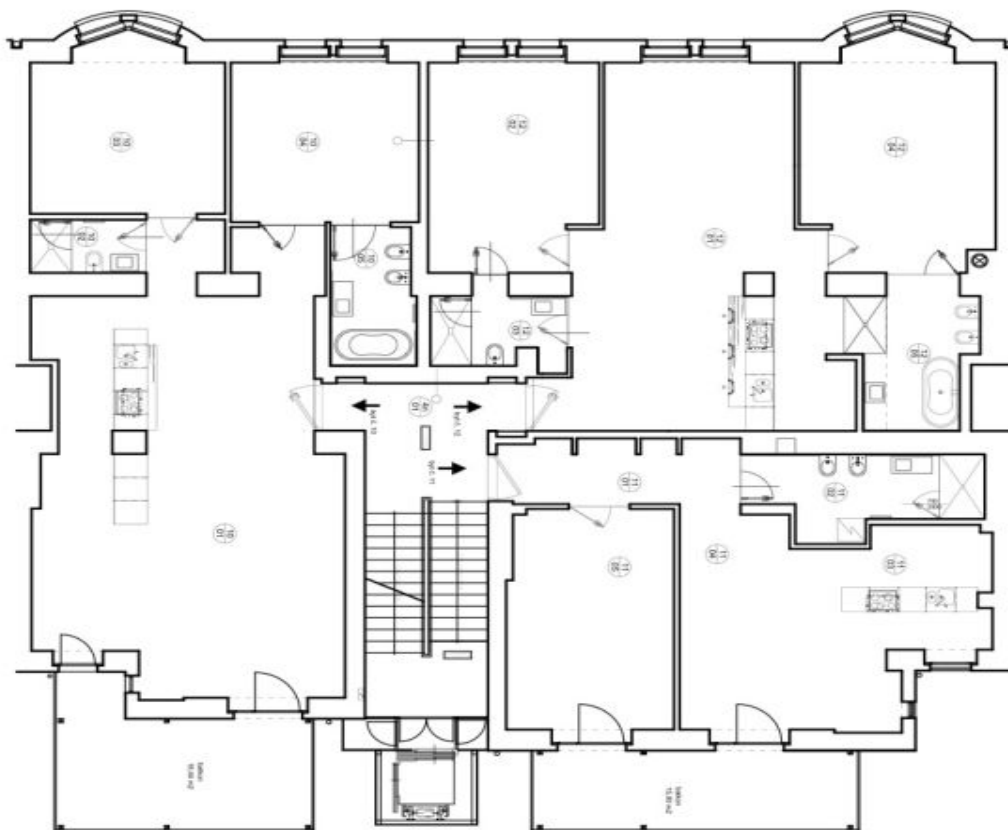


* Area of the unit according to the Civil Code. The area consists of the sum total area of the entire unit bounded by perimeter walls.

Apartment Two-bedroom (3+kk)

Rented

109 m², Prague 3, Vinohrady, Laubova



4.NP

BYT 4.10			
CZM	MĚTNOST	PODLAHA	
11001	obývací pokoj s kuchyní	70,61	dlouhý garžový
11002	ložnice I.	3,00	korunní dlažba
11003	ložnice I.	18,82	dlouhý garžový
11004	ložnice II.	17,22	dlouhý garžový
11005	ložnice III.	6,63	korunní dlažba
BYT 4.10 celkem		116,28	

BYT 4.11			
CZM	MĚTNOST	PODLAHA	
11011	obývací	8,81	dlouhý garžový
11012	ložnice	9,34	korunní dlažba
11013	kuchyně + jídelna	18,82	dlouhý garžový
11014	obývací pokoj	14,31	dlouhý garžový
11015	ložnice	21,40	dlouhý garžový
BYT 4.11 celkem		72,68	

BYT 4.12			
CZM	MĚTNOST	PODLAHA	
12011	obývací pokoj s kuchyní	49,60	dlouhý garžový
12012	ložnice I.	20,07	dlouhý garžový
12013	ložnice I.	5,75	korunní dlažba
12014	ložnice II.	24,80	dlouhý garžový
12015	ložnice III.	8,71	korunní dlažba
BYT 4.12 celkem		108,93	

BYT 4.13			
CZM	MĚTNOST	PODLAHA	
13011	obývací pokoj s kuchyní	25,50	korunní