

Apartment Two-bedroom (3+kk)

Rented

116.06 m², Prague 3, Vinohrady, Laubova



Apartment Two-bedroom (3+kk)

Rented

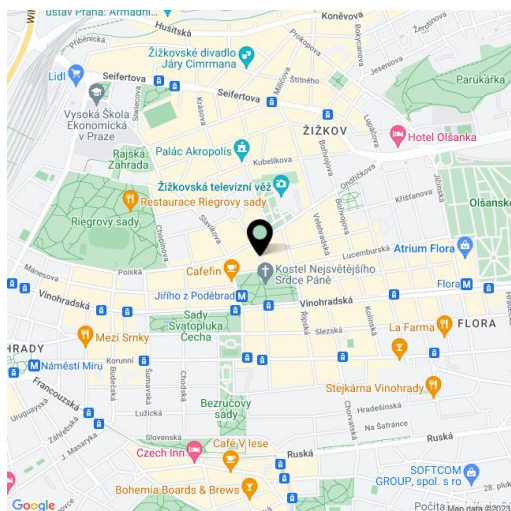
116.06 m², Prague 3, Vinohrady, Laubova

Total area	135 m ²
Floor area*	116 m ²
Terrace	18 m ²
Parking	Parking available.
Garage	Yes
Cellar	Yes
Service price	Deposit for services and utilities CZK 10,000/month.
PENB	G
Reference number	14793
Available from	Immediately

This designer apartment with 2 bathrooms and a terrace is on the 2nd floor of a fully refurbished classic building with an elevator conveniently located in a quiet part of the popular residential area of Vinohrady with full amenities, mere steps from the Jiřího z Poděbrad metro station, a short walk to Riegrovy Sady Park.

With quality materials and finishes, the apartment features a living room with a fully fitted open plan kitchen and access to the terrace, two bedrooms with built-in wardrobes, a bathroom with a bathtub, bidet, and toilet, a shower bathroom with a toilet, and an entry hall.

Tall clean lines, wooden floors, security door, recessed lighting, central switch, washer, dryer, satellite and Internet connection, alarm that can be connected to a security agency, video entry phone. Parking available at CZK 5,000/month.

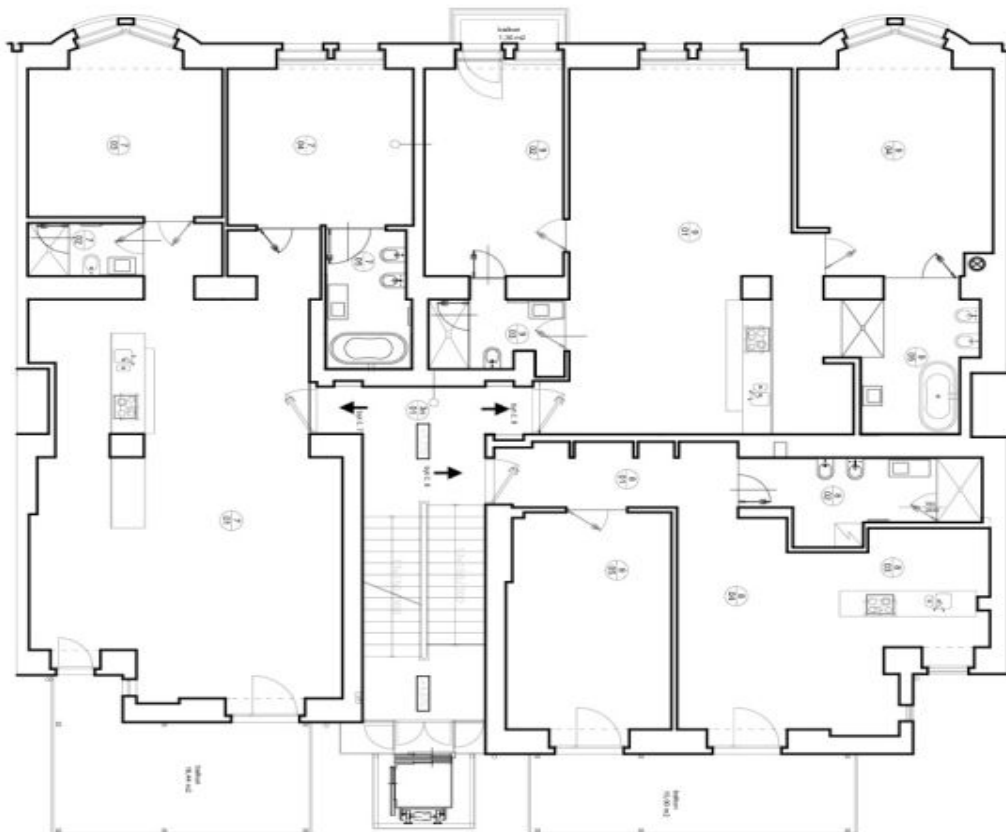


* Area of the unit according to the Civil Code. The area consists of the sum total area of the entire unit bounded by perimeter walls.

Apartment Two-bedroom (3+kk)

Rented

116.06 m², Prague 3, Vinohrady, Laubova



3.NP

BYT 2.7		PODLAHA
CZM	MÍSTNOST	m ²
710	obývací pokoj s kuchyní	70,07
710	kuchyně I.	3,50
710	ložnice I.	16,46
710	ložnice II.	17,40
710	kuchyně II.	6,53
BYT 2.7 celkem		114,06

BYT 2.8		PODLAHA
CZM	MÍSTNOST	m ²
810	obývací	8,98
810	kuchyně	9,34
810	kuchyně + jídelna	16,44
810	obývací pokoj	14,27
810	ložnice	20,02
BYT 2.8 celkem		71,27

BYT 2.9		PODLAHA
CZM	MÍSTNOST	m ²
910	obývací pokoj s kuchyní	51,31
910	ložnice I.	17,07
910	kuchyně I.	6,35
910	ložnice II.	23,79
910	kuchyně II.	9,92
BYT 2.9 celkem		108,44

SPRIT	svoboda	26,43	BRNO
-------	---------	-------	------