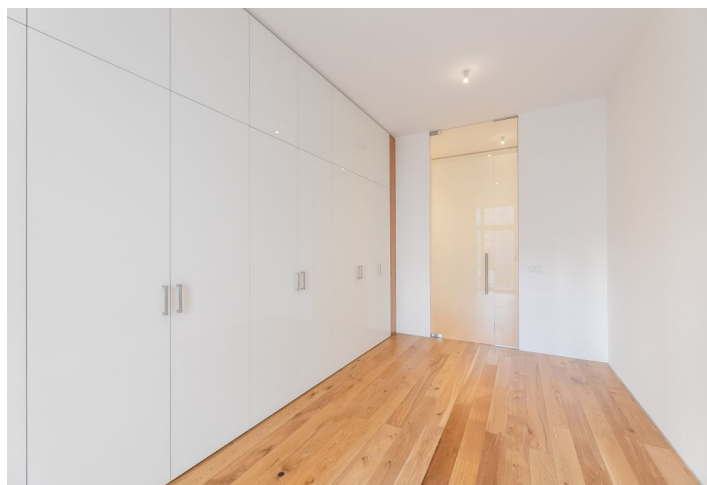


Apartment One-bedroom (2+kk)

Rented

74 m², Prague 3, Vinohrady, Laubova



Apartment One-bedroom (2+kk)

Rented

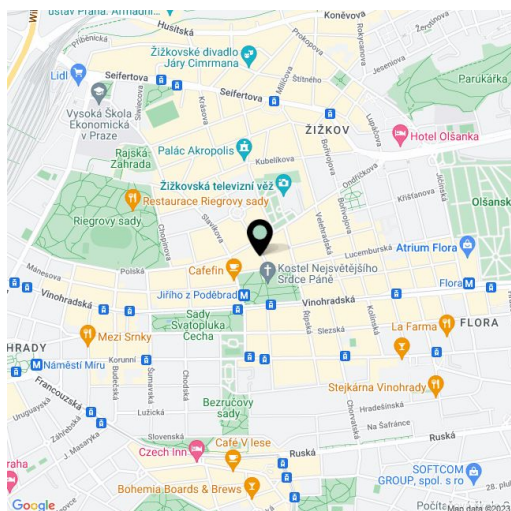
74 m², Prague 3, Vinohrady, Laubova

Total area	89 m ²
Floor area*	74 m ²
Terrace	15 m ²
Parking	On-site parking available.
Garage	Yes
Cellar	-
Service price	Deposit for utilities CZK 7,000/month.
PENB	G
Reference number	14791
Available from	Immediately

Designer apartment with a 15 m² terrace facing the quiet courtyard on the 1st floor of a fully refurbished classic building with an elevator. Conveniently located in a quiet part of a popular residential area of Vinohrady with full amenities, mere steps from the Jiřího z Poděbrad metro station, a short walk to Riegrovy Sady Park.

With quality materials and finishes, the apartment features a fully fitted open plan kitchen with integrated appliances and lots of cupboard space, a living room with access to the terrace, one bedroom with built-in wardrobes and terrace access, a shower bathroom with a toilet, bidet, and a closet/laundry room, and an entry hall with built-in wardrobes.

Wooden floors, French windows, security door, recessed lighting, central switch, washer, dryer, satellite and Internet connection, alarm that can be connected to a security agency, video entry phone. **One garage parking space** in the building available at CZK 5,000/month.



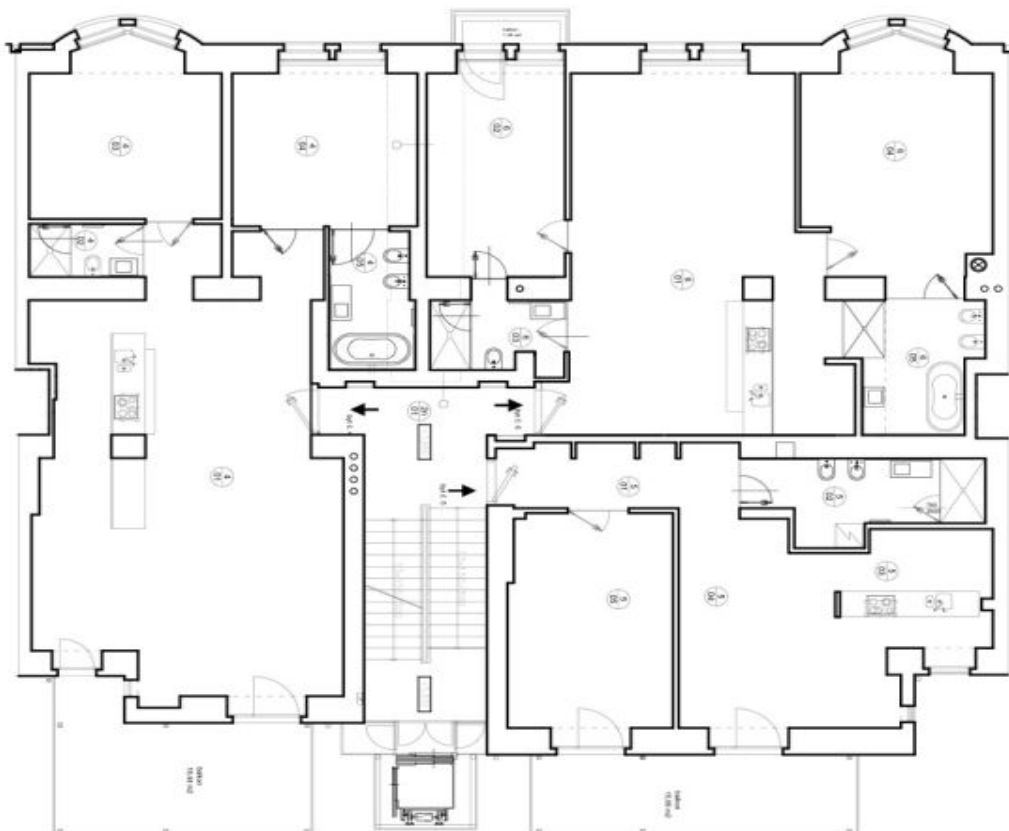
* Size of the unit according to the Housing Act.

The area consists of the sum total of the internal area of every room.

Apartment One-bedroom (2+kk)

Rented

74 m², Prague 3, Vinohrady, Laubova



2.NP

BYT 6.4		
OZN	MÍSTNOST	m ²
401	obývací pokoj s kuchyní	69,90
402	ložnice I.	3,60
403	ložnice II.	16,00
404	ložnice III.	17,20
405	ložnice IV.	6,63
BYT 6.4 celkem		
113,34		

BYT 6.5		
OZN	MÍSTNOST	m ²
501	chodba	8,87
502	ložnice I.	9,39
503	ložnice II.	16,00
504	obývací pokoj	14,23
505	ložnice III.	20,96
BYT 6.5 celkem		
71,45		

BYT 6.6		
OZN	MÍSTNOST	m ²
601	obývací pokoj s kuchyní	51,77
602	ložnice I.	16,80
603	ložnice II.	5,72
604	ložnice III.	24,36
605	ložnice IV.	9,17
BYT 6.6 celkem		
107,82		

OZN	MÍSTNOST	m ²
BYT 6.6 celkem		
107,82		