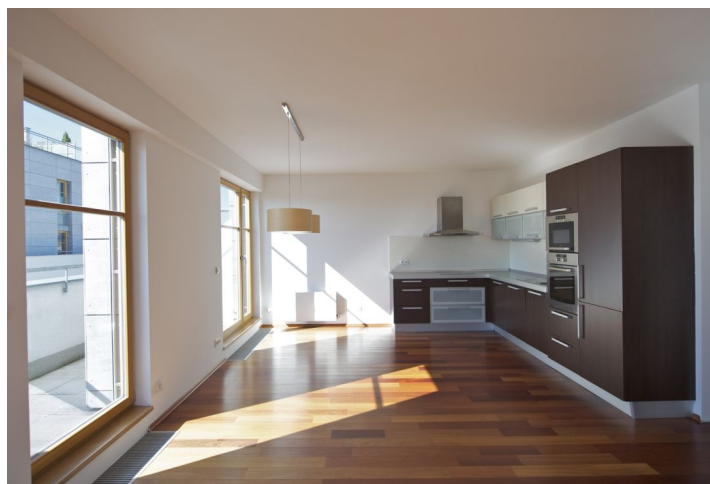


Apartment Two-bedroom (3+kk)

Rented

90 m², Prague 3, Žižkov, Pod kapličkou



Apartment Two-bedroom (3+kk)

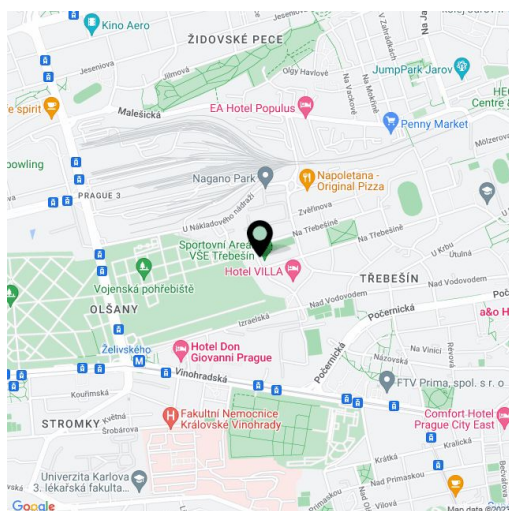
Rented90 m², Prague 3, Žižkov, Pod kapličkou

Total area	115 m ²
Floor area*	90 m ²
Terrace	25 m ²
Parking	Parking available.
Garage	Yes
Cellar	Yes
PENB	G
Reference number	14550
Available from	Immediately

Good quality 2-bedroom flat with a 25 m² terrace providing far reaching views situated on the 6th floor of a modern building with underground parking. Quiet green location with quick connection to the city center, just two bus stops from Želivského metro station, with tennis courts, a nice park and a children's playground nearby.

The interior includes a spacious living room with a fully fitted open kitchen, two separate bedrooms, bathroom with bath tub, double sink and toilet, guest toilet, and entry hall. The terrace is accessible from all main rooms.

Wood floors, French windows, built-in wardrobes, washing machine, Internet, alarm, audio entry phone, 5 m² cellar, lift from the garage. One parking space includes. Common building charges and utilities CZK 5500/month.



* Area of the unit according to the Civil Code. The area consists of the sum total area of the entire unit bounded by perimeter walls.